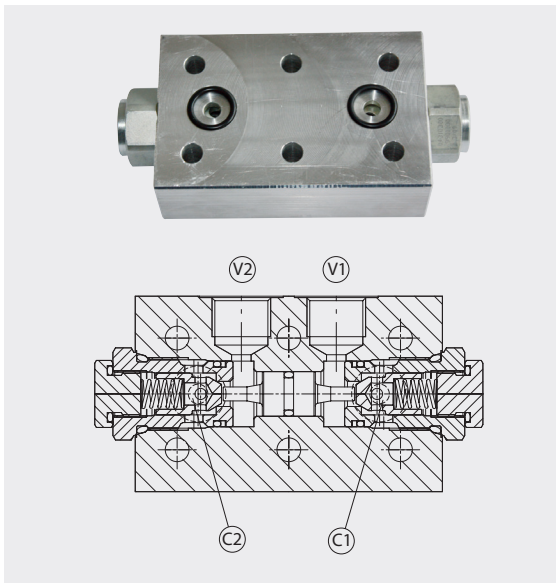


# VRDF Valvole di blocco flangiata a doppio effetto

## Double acting pilot check valves-flanged version



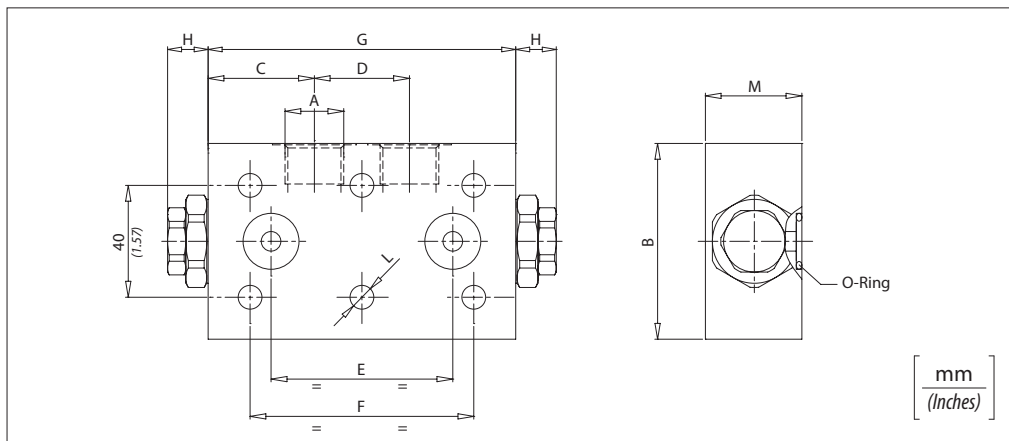
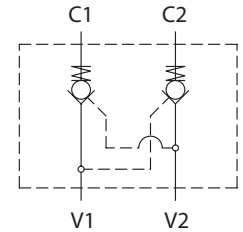
### Dati tecnici

#### Technical data

Olio idraulico Mineral oil	ISO 6743/4 DIN 51524
Viscosità fluido Fluid viscosity	10-500 mm <sup>2</sup> /s 45 to 2000 ssu (6 to 420 cSt)
Classe di contaminazione max con filtro Max contamination index with filter	ISO 4406:1999 Classe 19/17/14
Temperatura del fluido Fluid temperature	-20°C +80°C -4°F + 176°F
Temperatura ambiente Ambient temperature	-20°C +50°C -4°F + 122°F

È indispensabile l'utilizzo di un filtro (filtrazione consigliata 15 micron) per proteggere la valvola

It is necessary a filter use to protect the valve (advised filtration 15 micron)



### Codice ordinazione / Ordering code

## VRDF -X-Y-K-I

### X

Dimensione / Size

380

BSPP 3/8

120

BSPP 1/2

### Y

Dimensione / Size

1

1 bar

6

6 bar Standard

### K

O-Ring sul pistone di pilotaggio  
O-ring on pilot piston

0

NO o-ring

1

Con o-ring / With o-ring

Solo per BSPP1/2 / For BSPP1/2 only

### K

Rapporto di pilotaggio  
Pilot ratio

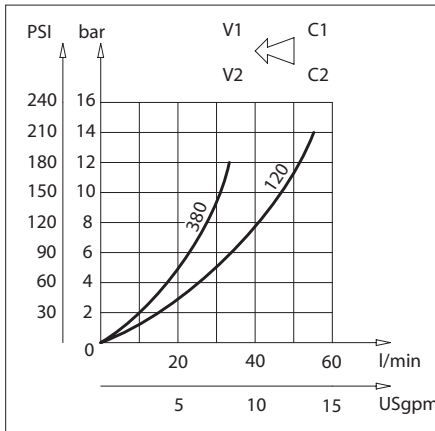
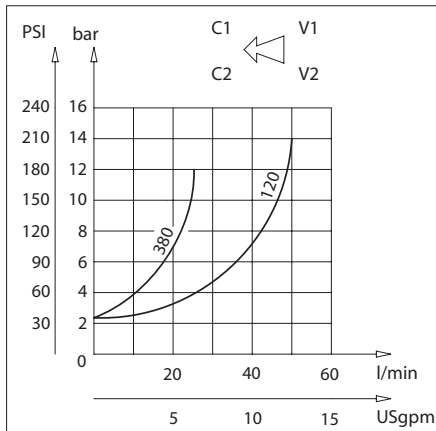
32

1:3,2

70

1:7

### Perdite di carico / Pressure drops



### Caratteristiche tecniche / Technical performances

Codice Code	A	Portata max Max Flow l/min-USgpm	Pressione Max Max pressure bar/PSI	B	C	D	E	F	G	H	L	M	O-Ring	Peso approssimativo Approx weight Kg / lb	Rapporto di pilotaggio Pilot ratio
VRDF380	BSPP 3/8	35 (9)	350 (5000)	60 (2.36)	32 (1.26)	32 (1.26)	62 (2.44)	70 (2.76)	96 (3.78)	10 (0.39)	6.5 (0.26)	34 (1.34)	9.19 x 2.62	1,15 (2.53)	1:7
VRDF120	BSPP 1/2	50 (13)		70 (2.76)	38 (1.49)	34 (1.34)	65 (2.56)	80 (3.15)	110 (4.33)	14.5 (0.57)	8.5 (0.33)		15.54 x 2.62	1,85 (4)	1:3,2
															1:7