

01 02 03 04 05 06 07

CODICE ORDINAZIONE
ORDERING CODE

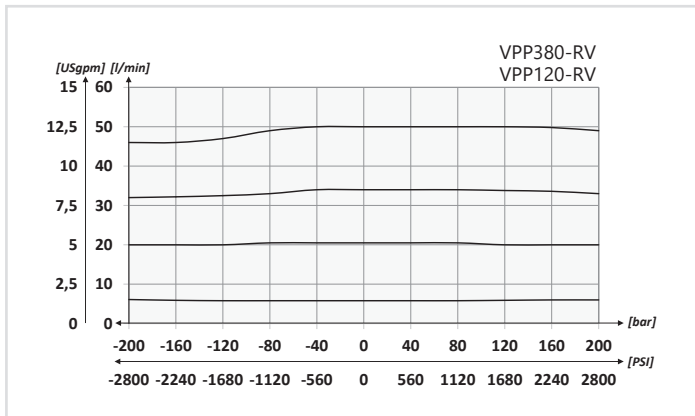
VPP	V	RV				
------------	----------	-----------	--	--	--	--

01	REGOLATORI DI FLUSSO 3 VIE - COMPENSATI, CON ECCEDEZZA IN PRESSIONE, VALVOLA DI MASSIMA E VALVOLA ELETTRICA DI MESSA A SCARICO 3 WAYS FLOW CONTROL VALVES - PRESSURE COMPENSATED, EXCEEDING FLOW TO PRESSURE, RELIEF VALVE AND ELECTRICAL UNLOADER VALVE		VPP	
02	DIMENSIONE (SIZE)	BSPP 3/8	380	
		BSPP 1/2	120	
03	REGOLAZIONE (SETTING)	Volantino (Hand wheel)	V	
04	Valvola di massima (Relief valve)		RV	
05	VALVOLA DI MASSIMA (RELIEF VALVE) V MAX	Tappo (Plug)		0
		VMD1NC1	Molla (Spring) 10/40 bar (145/580PSI)	1
		VMD1NC2	Molla (Spring) 20/110 bar (290/1595 PSI)	2
		VMD1NC3	Molla (Spring) 30/210 bar (435/3045 PSI)	3
		VMD1NC4	Molla (Spring) 40/350 bar (580/5075 PSI)	4
06	VALVOLA ELETTRICA (ELECTRICAL VALVE) EV	Tappo (Plug)		0
		EVC7 (Normally closed)		C
		EVA7 (Normally open)		A
		EVE7 (Normally closed + Emergency)		E
07	BOBINA (COIL) EV	Senza bobina (Without coil)		
		12 V (DC)	12	
		24 V (DC)	24	
		220 V (RAC)	220	

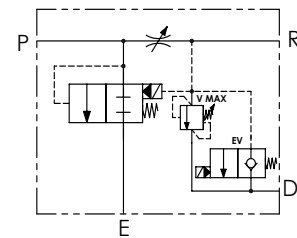
DATI TECNICI / TECHNICAL DATA

Olío idraulico - Mineral oil	ISO 6743/4 (DIN 51524)
Viscosità olio - Oil viscosity	15-250 mm ² /s (15 to 250 cSt)
Classe di contaminazione max con filtro Max contamination index with filter	ISO 4406:1999 Classe 19/17/14
Temperatura dell'olio - Oil temperature	-20°C +80°C -4°F +176°F
Temperatura ambiente - Environment temperature	-20°C +50°C -4°F +122°F
È indispensabile l'utilizzo di un filtro per proteggere la valvola (filtrazione consigliata 15 µm) It is necessary a filter use to protect the valve (advised filtration 15 µm)	

PERFORMANCES

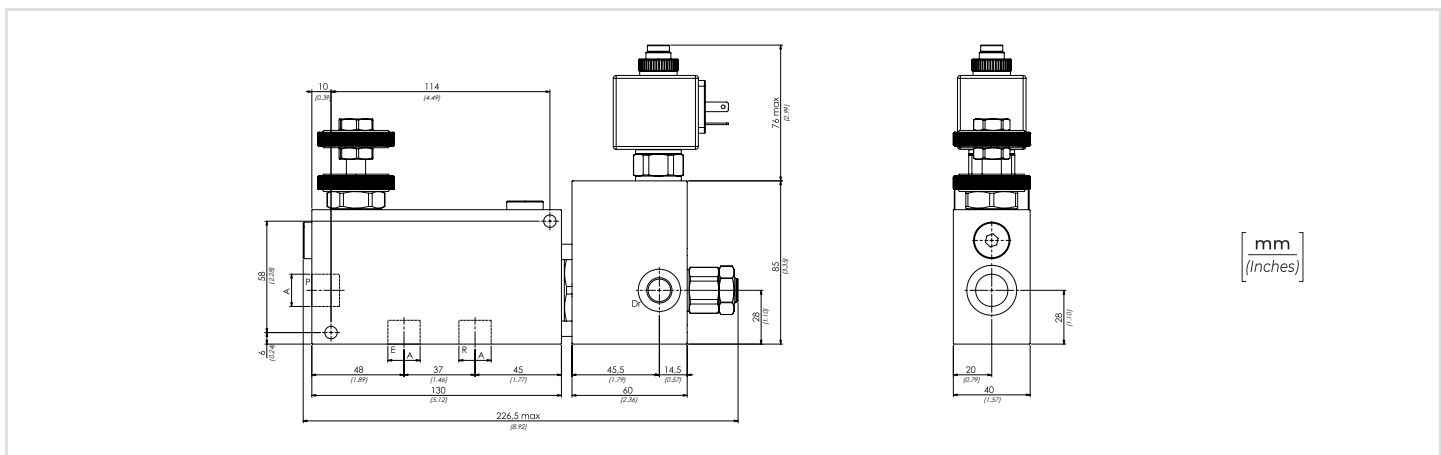


SCHEMA IDRAULICO / HYDRAULIC CIRCUIT



PORTATA MASSIMA L/MIN - MAX FLOW USGPM

50 l/min con 30 l/min in R (13,3 USgpm with 8 USgpm in R)	380
90 l/min con 50 l/min in R (24 USgpm with 13,3 USgpm in R)	120



CARATTERISTICHE TECNICHE / TECHNICAL CHARACTERISTICS

TIPO TYPE	A	PORTATA MAX (l/min) MAX FLOW (USgpm)	PRESSIONE MAX (bar) MAX PRESSURE (PSI)	PESO APPROX SENZA VALVOLE (kg) APPROX WEIGHT WITHOUT VALVES (lb)
VPP380-RV	BSPP 3/8	50 (13.2)	250 (3625)	2,25 (4.97)
VPP120-RV	BSPP 1/2	90 (23.8)		