



# 104 SERIES DIN



Manufactured according to ISO 5675 norm, DN13 size meets also ISO 7241-A requirements.  
Poppet Valve or Ball closing system.  
BSP, NPTF, SAE/ORB threads. Others available upon request.

### • Materials

Body: Carbon Steel EN -10277-3, AISI 303 / AISI 316 /  
BRASS DIN EN-12164  
O-ring: NBR, Viton or EPDM  
Back-Up-Ring: PTFE  
Balls: AISI 1010/1015  
Springs: Carbon Steel  
DIN 17233/84(B)

### • Working temperature (O-ring)

	NBR	Viton	EPDM
+	+100°C	+200°C	+150°C
-	-30°C	-10°C	-40°C

• Applications: Designed for Oil hydraulic Applications.

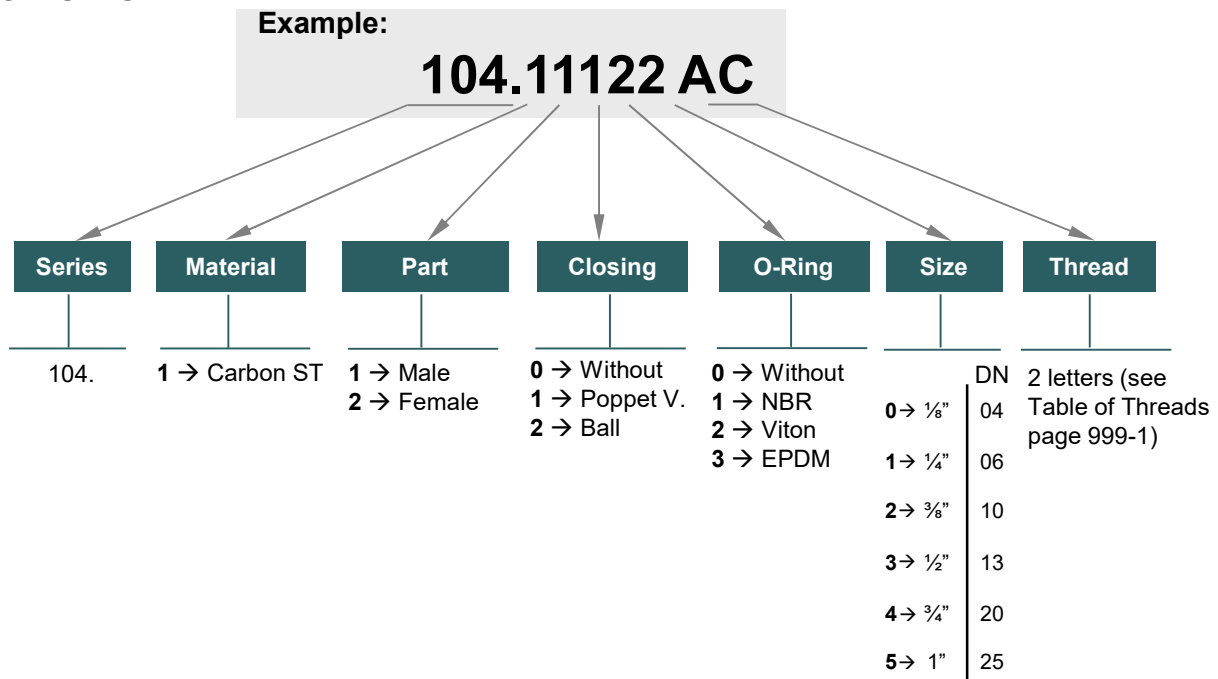
• Sectors: Industrial, Agricultural

### • Equivalence

FASTER NV-NS  
AEROQUIP FD76  
PARKER 4000  
SNAP-TITE 60



## MODEL STRUCTURE



104-1



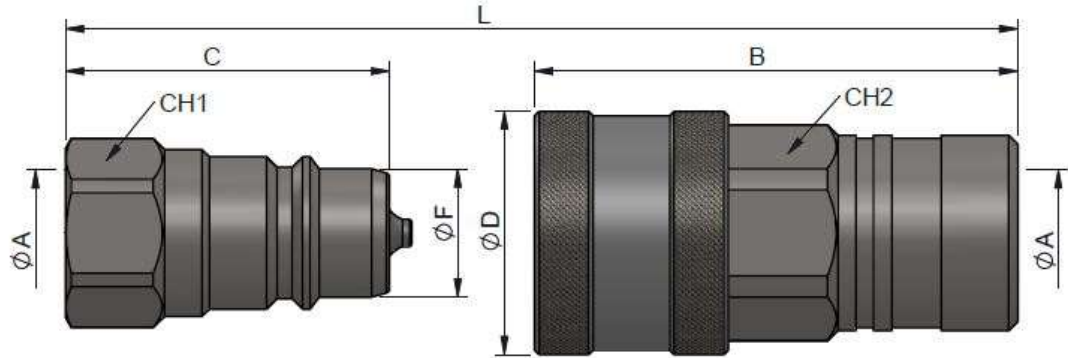


# 104 SERIES

## DIN POPPET



### DN06

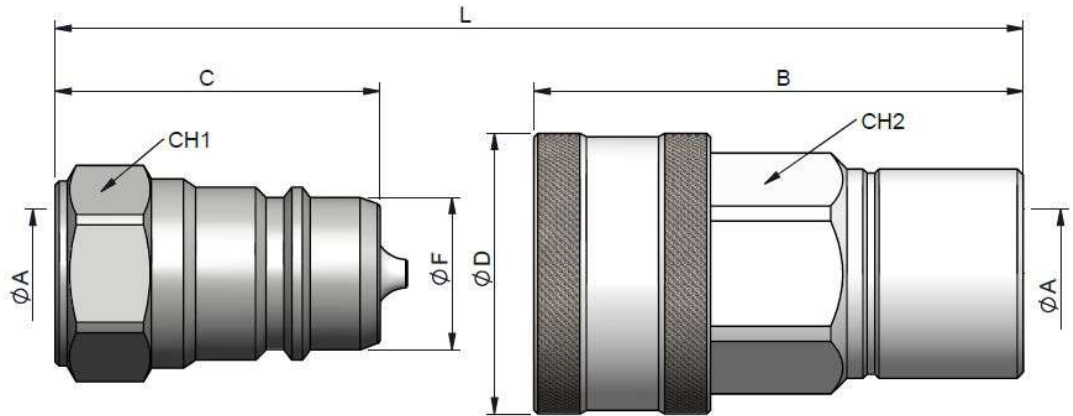


MALE STANDARD MODELS

FEMALE STANDARD MODELS

DN	ØA	REF.		CH1	C	ØF	L	DN	ØA	REF.		CH2	B	ØD	L
06	1/4" BSP	104.11111AB	350Bar	19	36	14.20	72	06	1/4" BSP	104.12111AB	350Bar	22	53.50	27	72
	1/4" NPTF	104.11111BB								104.12111BB					
	9/16" 18ORB	104.11111GC								104.12111GC					

### DN10



MALE STANDARD MODELS

FEMALE STANDARD MODELS

DN	ØA	REF.		CH1	C	ØF	L	DN	ØA	REF.		CH2	B	ØD	L
10	3/8" BSP	104.11112AC	300Bar	24	40.50	18.95	81	10	3/8" BSP	104.12112AC	300Bar	27	61	35	81
	3/8" NPTF	104.11112BC								104.12112BC					

Manufactured according to ISO 5675 norm

L= length while quick coupling is connected.

104-2

INTEVA reserves the right to make modifications in its products without prior notice.  
Any external or internal alteration in our products will automatically void the warranty.



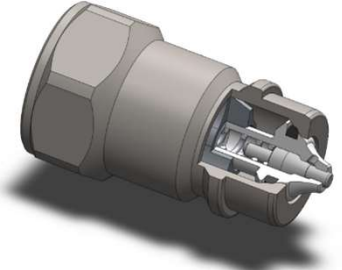
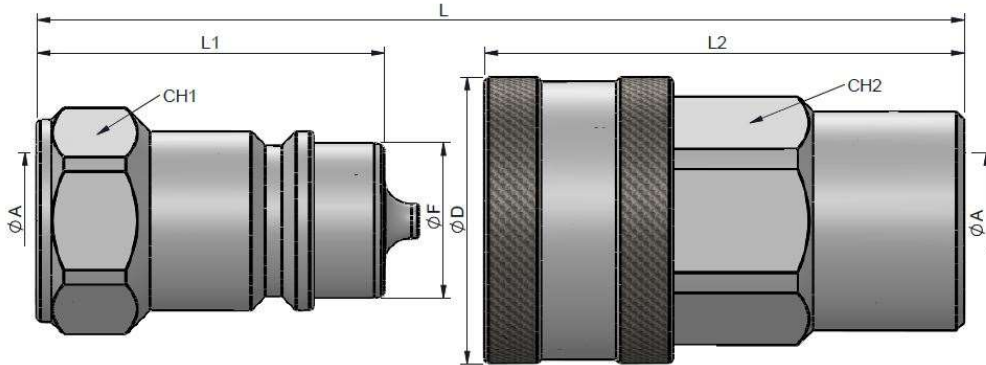


# 104 SERIES

## DIN POPPET



### DN13



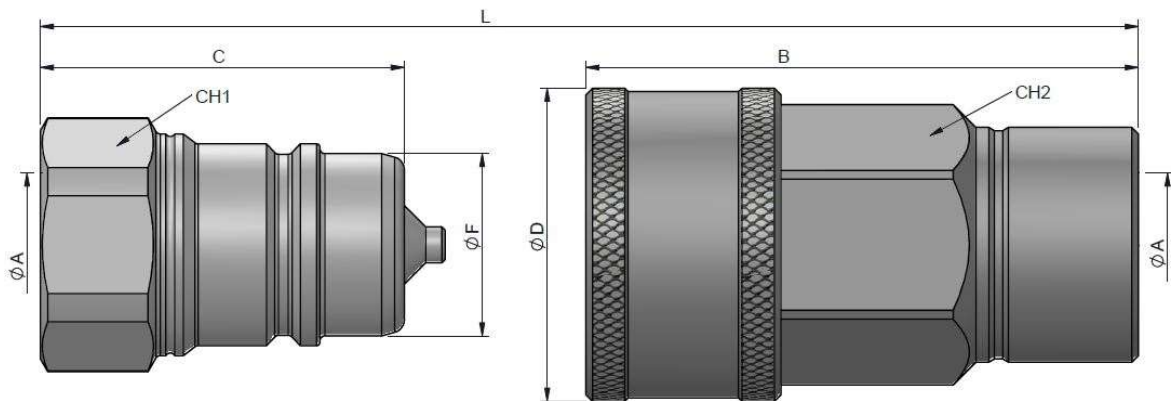
Conexión C.U.R.P. disponible  
Hasta 300 BAR de presión residual.

#### MALE STANDARD MODELS

#### FEMALE STANDARD MODELS

DN	ØA	REF.		CH1	L1	ØF	L	DN	ØA	REF.		CH2	L2	ØD	L
13	1/2" BSP	101.11113AD	300Bar	27o30	46	20.56	87.50	13	1/2" BSP	101.12113AD	300Bar	30	63.50	38	87.50
	1/2" NPTF	101.11113BD							1/2" NPTF	101.12113BD					
	M22X1.5	101.11113NG		M22X1.5					101.12113NG						
	3/4" - 16ORB	101.11113GF		3/4" - 16ORB					101.12113GF						
	7/8" 14ORB	101.11113GH		7/8" 14ORB					101.12113GH						

### DN20



#### MALE STANDARD MODELS

#### FEMALE STANDARD MODELS

DN	ØA	REF.		CH1	L1	ØF	L	DN	ØA	REF.		CH2	L2	ØD	L
20	3/4" BSP	104.11114AE	250Bar	36	56	27,95	112	20	3/4" BSP	104.12114AE	250Bar	38	85	48	112
	3/4" NPTF	104.11114BE							3/4" NPTF	104.12114BE					

Manufactured according to ISO 5675 norm

L= length while quick coupling is connected.

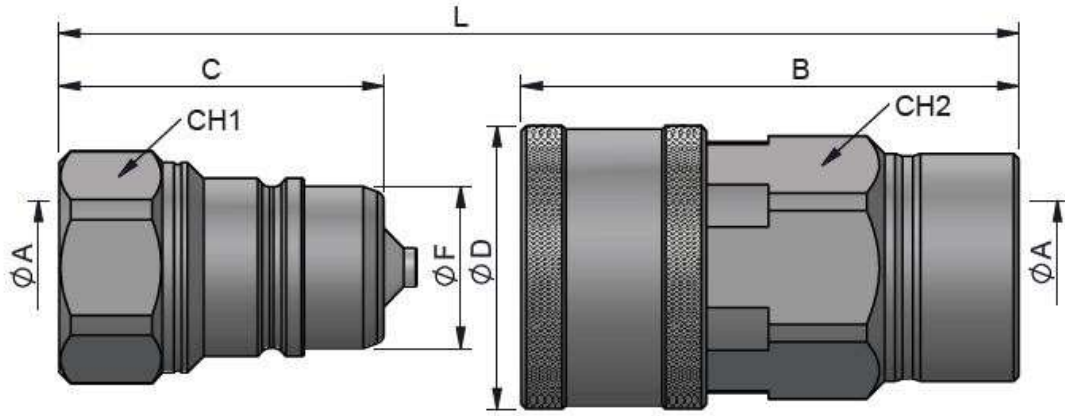


# 104 SERIES

## DIN POPPET



DN25



MALE STANDARD MODELS

FEMALE STANDARD MODELS

DN	ØA	REF.		CH1	C	ØF	L	DN	ØA	REF.		CH2	B	ØD	L
25	1" BSP	104.11115AF	220Bar	41	63	31.30	126	25	1" BSP	104.12112AC	220Bar	46	96.50	55	126
	1" NPTF	104.11115BF								104.12112BC					

Manufactured according to ISO 5675 norm

L= lenght while quick coupling is connected.

**104-4**

INTEVA reserves the right to make modifications in its products without prior notice.  
Any external or internal alteration in our products will automatically void the warranty.

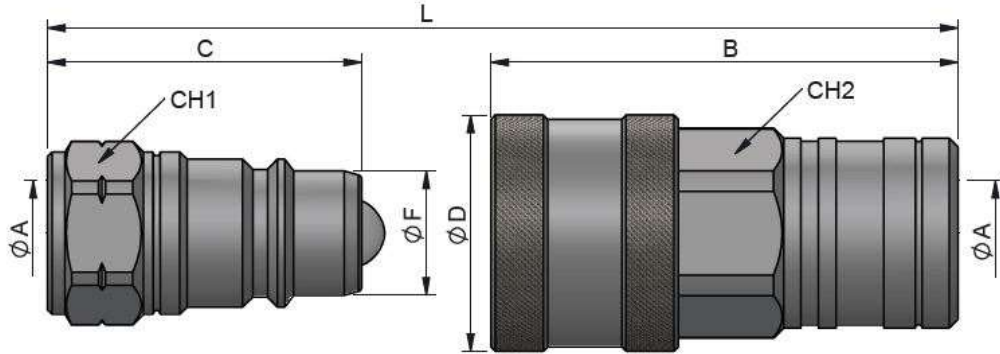




# 104 SERIES DIN BALL



## DN06

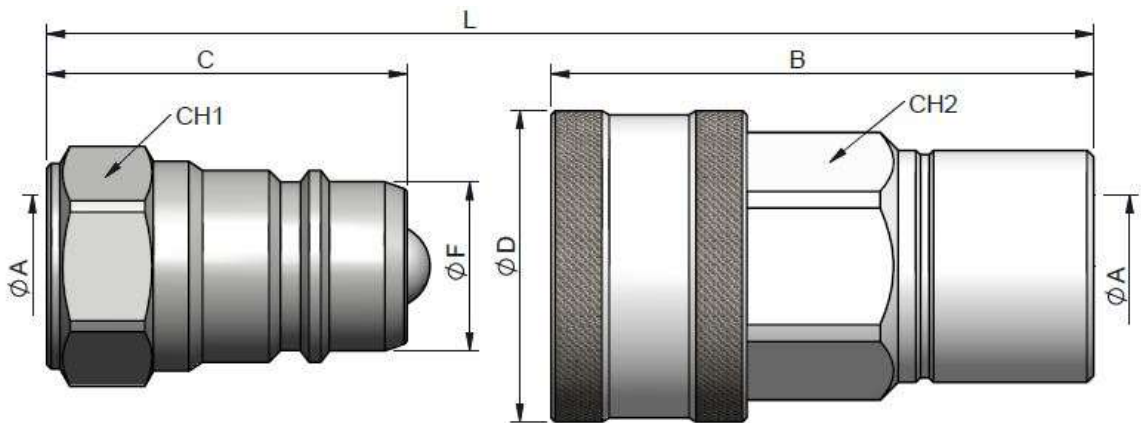


MALE STANDARD MODELS

FEMALE STANDARD MODELS

DN	ØA	REF.		CH1	C	ØF	L	DN	ØA	REF.		CH2	B	ØD	L
06	1/4" BSP	104.11211AB	350Bar	19	36	14.20	72	06	1/4" BSP	104.12211AB	350Bar	22	53.50	27	72
	1/4" NPTF	104.11211BB								104.12211BB					
	9/16" 18ORB	104.11211GC								104.12211GC					

## DN10



MALE STANDARD MODELS

FEMALE STANDARD MODELS

DN	ØA	REF.		CH1	C	ØF	L	DN	ØA	REF.		CH2	B	ØD	L
10	3/8" BSP	104.11212AC	300Bar	24	40.50	18.95	81	10	3/8" BSP	104.12212AC	300Bar	27	61	35	81
	3/8" NPTF	104.11212BC								104.12212BC					

Manufactured according to ISO 5675 norm

L= length while quick coupling is connected.

104-5

INTEVA reserves the right to make modifications in its products without prior notice. Any external or internal alteration in our products will automatically void the warranty.





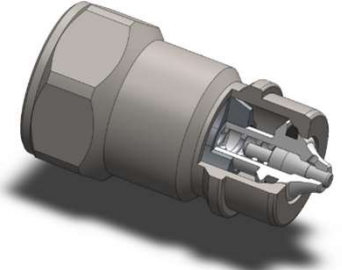
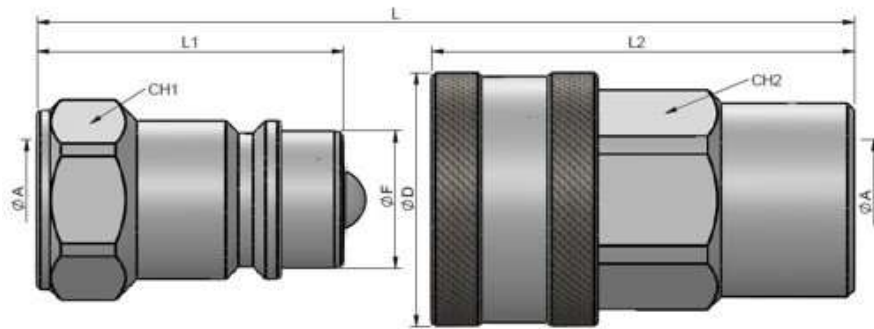


# 104 SERIES

## DIN BALL



### DN13



Conexión C.U.R.P. disponible  
Hasta 300 BAR de presión residual.

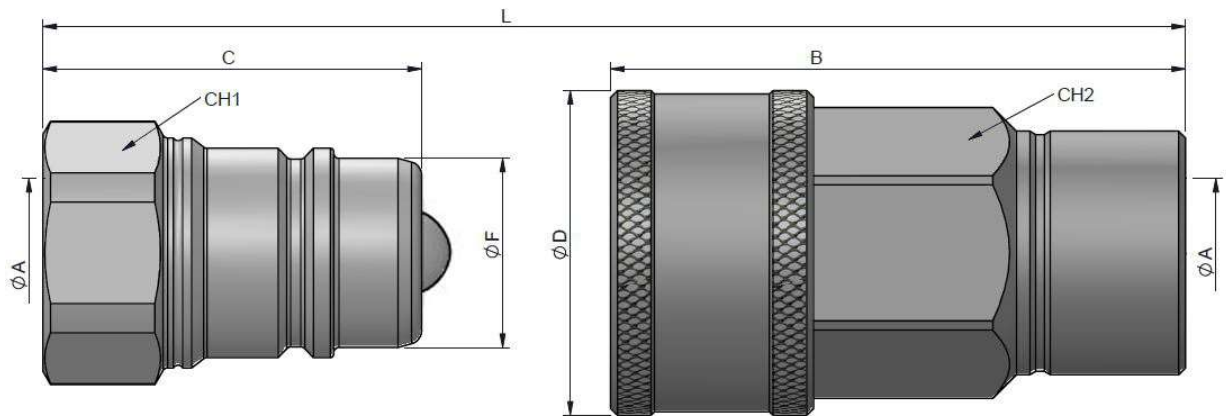
#### MALE STANDARD MODELS

DN	ØA	REF.		CH1	L1	ØF	L
13	1/2" BSP	101.11213AD	300Bar	27o30	46	20.56	87.50
	1/2" NPTF	101.11213BD					
	3/4" - 16ORB	101.11213GF		27o30			
	7/8" - 14ORB	101.11213GH		27o30			

#### FEMALE STANDARD MODELS

DN	ØA	REF.		CH2	L2	ØD	L
13	1/2" BSP	101.12213AD	300Bar	30	63.50	38	87.50
	1/2" NPTF	101.12213BD					
	3/4" - 16ORB	101.12213GF					
	7/8" - 14ORB	101.12213GH					

### DN20



#### MALE STANDARD MODELS

DN	ØA	REF.		CH1	L1	ØF	L
20	3/4" BSP	101.11214AE	250Bar	36	56	29	112
	3/4" NPTF	101.11214BE					

#### FEMALE STANDARD MODELS

DN	ØA	REF.		CH2	L2	ØD	L
20	3/4" BSP	101.12214AE	250Bar	38	83.5	46	112
	3/4" NPTF	101.12214BE					

Manufactured according to ISO 5675 norm

L= length while quick coupling is connected.

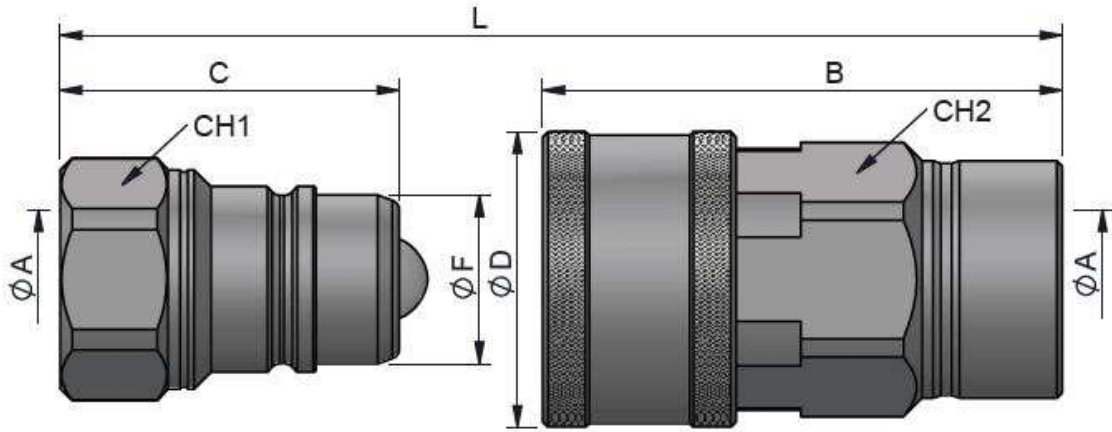


# 104 SERIES

## DIN BALL



DN25



MALE STANDARD MODELS

FEMALE STANDARD MODELS

DN	ØA	REF.		CH1	C	ØF	L	DN	ØA	REF.		CH2	B	ØD	L
10	3/8" BSP	104.11212AC	300Bar	24	40.50	18.95	81	10	3/8" BSP	104.12212AC	300Bar	27	61	35	81
	3/8" NPTF	104.11212BC								104.12212BC					

Manufactured according to ISO 5675 norm

L= lenght while quick coupling is connected.

**104-7**

INTEVA reserves the right to make modifications in its products without prior notice.  
Any external or internal alteration in our products will automatically void the warranty.



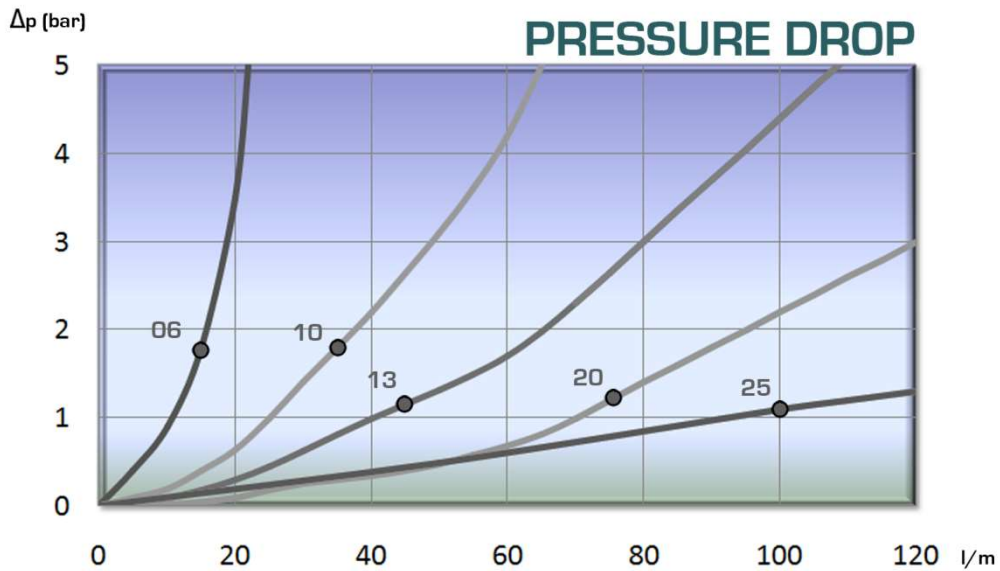


# 104 SERIES DIN



TECHNICAL DATA					
DN	Rated Flow	Min Burst Pressure (bar)			Max. Working Pressure
		Male	Female	Coupled	
06	15 l/m	1650	1800	1400	350 Bar
10	35 l/m	1250	1350	1200	300 Bar
13	45 l/m	1200	1300	1200	300 Bar
20	74 l/m	1030	1200	1000	250 Bar
25	100 l/m	950	980	920	220 Bar

Test performed according to ISO 18869







# 104 SERIES DIN PLUGS & CAPS

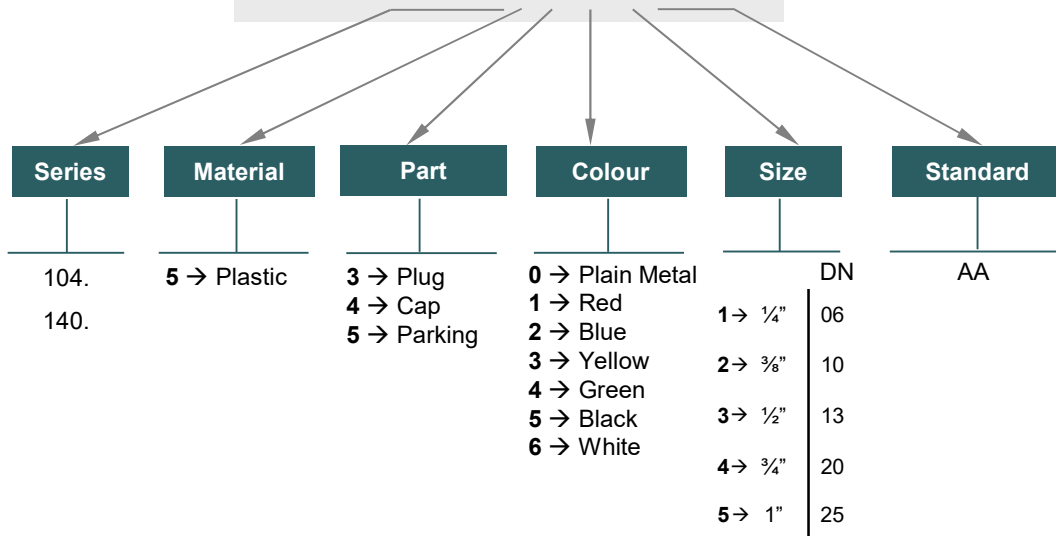



DIN SERIES PLUGS/ CAPS have been designed to protect FEMALE (coupler) or MALE (nipple) parts while they are disconnected.  
They have been manufactured according to ISO 5675 norm, DN13 size meets also ISO7241-A requirements

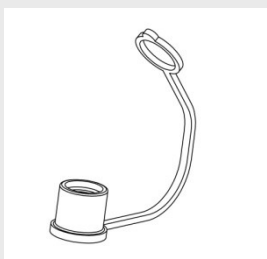
## MODEL STRUCTURE For plugs and caps

Example:

### 104.5353 AA

PLUG						
DN	RED	BLUE	YELLOW	GREEN	BLACK	WHITE
06	*	*	*	*	104.5351AA	*
10	*	*	*	*	104.5352AA	*
13	*	*	*	*	101.5353AA	*
20	*	*	*	*	104.5354AA	*
25	*	*	*	*	104.5355AA	*



CAP						
DN	RED	BLUE	YELLOW	GREEN	BLACK	WHITE
06	*	*	*	*	104.5451AA	*
10	*	*	*	*	104.5452AA	*
13	*	*	*	*	101.5453AA	*
20	*	*	*	*	104.5454AA	*
25	*	*	*	*	104.5455AA	*

\* NOT AVAILABLE