

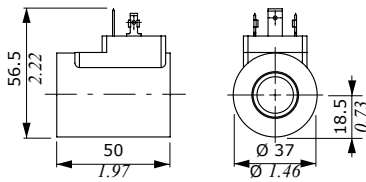
Types and ordering codes

Valve type	Coil	Voltage	Connector					
			ISO4400	Deutsch DT	AMP JPT	Packard Weather-pack	Packard Metri-pack	Flying leads
Directional solenoid valves								
EA08A	BE	12 VDC	4SL1000120	4SL1000123 ⁽⁶⁾ 4SL1000140 ⁽³⁻⁶⁾ 4SL1000124 ⁽²⁾	-	-	-	4SL1000122
		24 VDC	4SL1000240 4SL1030240 ⁽¹⁾	4SL1002401 ⁽⁶⁾	-	-	-	-
		110 VDC	4SL1011100 4SL1031100 ⁽¹⁾	-	-	-	-	-
		220 VDC	4SL1012200 4SL1032200 ⁽¹⁾	-	-	-	-	-
EA08B EW08A EJ08F EJ08G	BT	10 VDC	4SL3000100	-	-	-	-	-
		12 VDC	4SL3000120 4SL3000126 ⁽⁴⁾	4SL3000130 ⁽⁶⁾ 4SL3000134 ⁽³⁻⁶⁾ 4SL3000128 ⁽²⁾	4SL3000122 ⁽⁵⁾ 4SL3001200 ⁽³⁻⁵⁾	4SL3000124 ⁽²⁾	4SL3000127 ⁽²⁾	4SL300012C
		24 VDC	4SL3000240 4SL3030240 ⁽¹⁾	4SL3000249 ⁽⁶⁾ 4SL300024C ⁽³⁻⁶⁾	4SL3000248 ⁽⁵⁾	-	-	4SL3000246
		26 VDC	4SL3000260	-	-	-	-	-
		48 VDC	4SL3000480 4SL3030480 ⁽¹⁾	-	-	-	-	-
		110 VDC	4SL3001100 4SL3031100 ⁽¹⁾	-	-	-	-	-
		220 VDC	4SL3002200 4SL3032200 ⁽¹⁾	-	-	-	-	-
EW10M	BH	12 VDC	4SLD001200	4SLD001201 ⁽⁶⁾	4SLD001202 ⁽⁵⁾	-	-	4SLD001203
		24 VDC	4SLD002400	4SLD002401 ⁽⁶⁾	4SLD002402 ⁽⁵⁾	-	-	4SLD002403
		10 VDC	4SLE001000	-	-	-	-	-
EE08A EC..M EF..M EJ08M ER08M ET08M	BER	12 VDC	4SLE001200 4SLE001217 ⁽³⁾	4SLE001201 ⁽⁵⁾ 4SLE001209 ⁽³⁻⁵⁾ 4SLE001202 ⁽⁶⁾ 4SLE001216 ⁽³⁻⁶⁾ 4SLE001206 ⁽²⁾	4SLE001203 ⁽⁵⁾ 4SLE001211 ⁽³⁻⁵⁾	4SLE001210 ⁽²⁾	4SLE001214 ⁽²⁾	4SLE001207
		24 VDC	4SLE002400 4SLE002408 ⁽³⁾ 4SLE302400 ⁽¹⁾	4SLE002401 ⁽⁵⁾ 4SLE002407 ⁽³⁻⁵⁾ 4SLE002402 ⁽⁶⁾	4SLE002403 ⁽⁵⁾	-	-	4SLE002404
		48 VDC	4SLE004800 4SLE304800 ⁽¹⁾	-	-	-	-	-
		110 VDC	4SLE011000 4SLE311000 ⁽¹⁾	-	-	-	-	-
		220 VDC	4SLE022000 4SLE322000 ⁽¹⁾	-	-	-	-	-
EE10A EW10A EW10B	BIN19	10.5 VDC	4SL6000100	-	-	-	-	-
		12 VDC	4SL6000121	-	-	-	-	-
		24 VDC	4SL6000240	-	-	-	-	-
EE12A EW12A EW12C EJ12A ET12A	BIN22	12 VDC	4SL6000128	-	-	-	-	-
		24 VDC	4SL6000245	-	-	-	-	-
EJ10M EL08A ER10M ET10M	BC	10.5 VDC	4SL8000110	-	-	-	-	-
		12 VDC	4SL8000120	4SL800012B ⁽⁶⁾	4SL8000127 ⁽⁵⁾ 4SL8000130 ⁽⁵⁻³⁾	-	-	4SL800012A
		24 VDC	4SL8000240 4SL8030240 ⁽¹⁾	4SL8000243 ⁽⁶⁾	4SL8000241 ⁽⁵⁾	-	-	4SL8000242
		26 VDC	4SL8000260	-	-	-	-	-
		48 VDC	4SL8030480 ⁽¹⁾	-	-	-	-	-
		110 VDC	4SL8031100 ⁽¹⁾	-	-	-	-	-
EL10C	BQ16	12 VDC	4SL8000121	4SL8000128 ⁽⁵⁾	-	-	4SL8000124 ⁽²⁾	4SL8000125
		24 VDC	4SL8002400	4SL8000245 ⁽⁵⁾	-	-	-	-

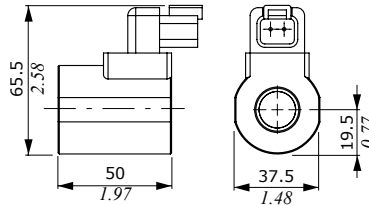
Dimensional data and features

BC type

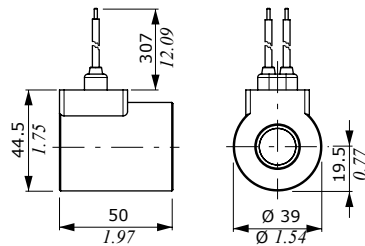
ISO4400 connector



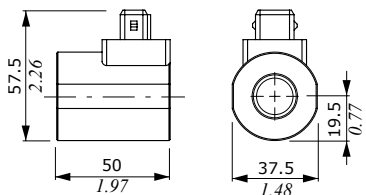
DEUTSCH DT04 connector



Flying leads



AMP JPT connector

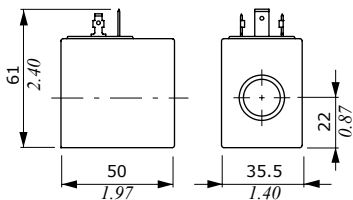


Features

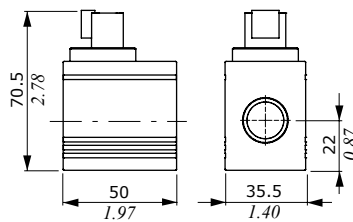
- Nominal voltage tolerance : $\pm 10\%$
- Power rating : 26.9 W - 10.5 VDC
: 26.2 W - 12 VDC
: 25.9 W - 24 VDC
: 24 W - 26 VDC
: 26 W - 24/48/110/220 RAC
- Max. operating current . . . : 2.6 A - 10.5 VDC
: 2.19 A - 12 VDC
: 1.08 A - 24 VDC
: 0.92 A - 26 VDC
: 1.2 A - 24 RAC
: 0.6 A - 48 RAC
: 0.3 A - 110 RAC
: 0.15 A - 220 RAC
- Coil insulation : Class H (180°C - 356°F)
- Weather protection : IP65 - ISO4400
: IP65 - AMP JPT
: IP69K - Deutsch DT
- Insertion : 100%

BQ16 type

ISO4400 connector



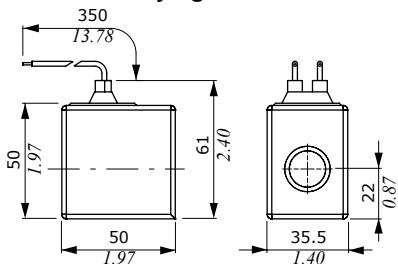
DEUTSCH DT04 connector



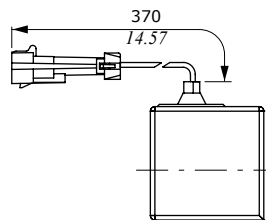
Features

- Nominal voltage tolerance : $\pm 10\%$
- Power rating : 30 W - 12/24 VDC
- Max. operating current . . . : 2.5 A - 12 VDC
: 1.25 A - 24 VDC
- Coil insulation : Class H (180°C - 356°F)
- Weather protection : IP65 - ISO4400
: IP69K - Deutsch DT
: IP67 - Metri-pack
- Insertion : 100%

Flying leads

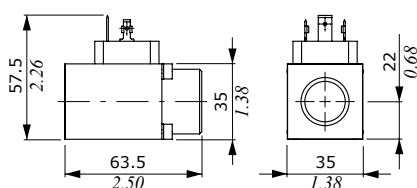


**Flying leads with
PACKARD METRI-PACK connector**



MP35 type

ISO4400 connector



Features

- Nominal voltage tolerance : $\pm 10\%$
- Power rating : 11.2 W - 12 VDC
: 11.4 W - 24 VDC
- Max. prop. control current : 1.25 A - 12 VDC
: 0.68 A - 24 VDC
- Coil insulation : Class F (155°C - 311°F)
- Weather protection : IP65 - ISO4400
- Insertion : 100%

