



# RCD DOUBLE FOOT PEDAL LOWER PORTS

RCD is a double pedal version remote control and belongs to the wide range of Hydrocontrol S.p.A. This pedal work according to the principle of direct-acting pressure reducing valves. In rest position, the foot pedal is held in neutral by return spring; inlet port P is closed and ports are connected to tank port T. Reduced overall dimensions and ergonomic design for a optimal control.



### TECHNICAL SPECIFICATIONS

Max pressure: **60 bar**

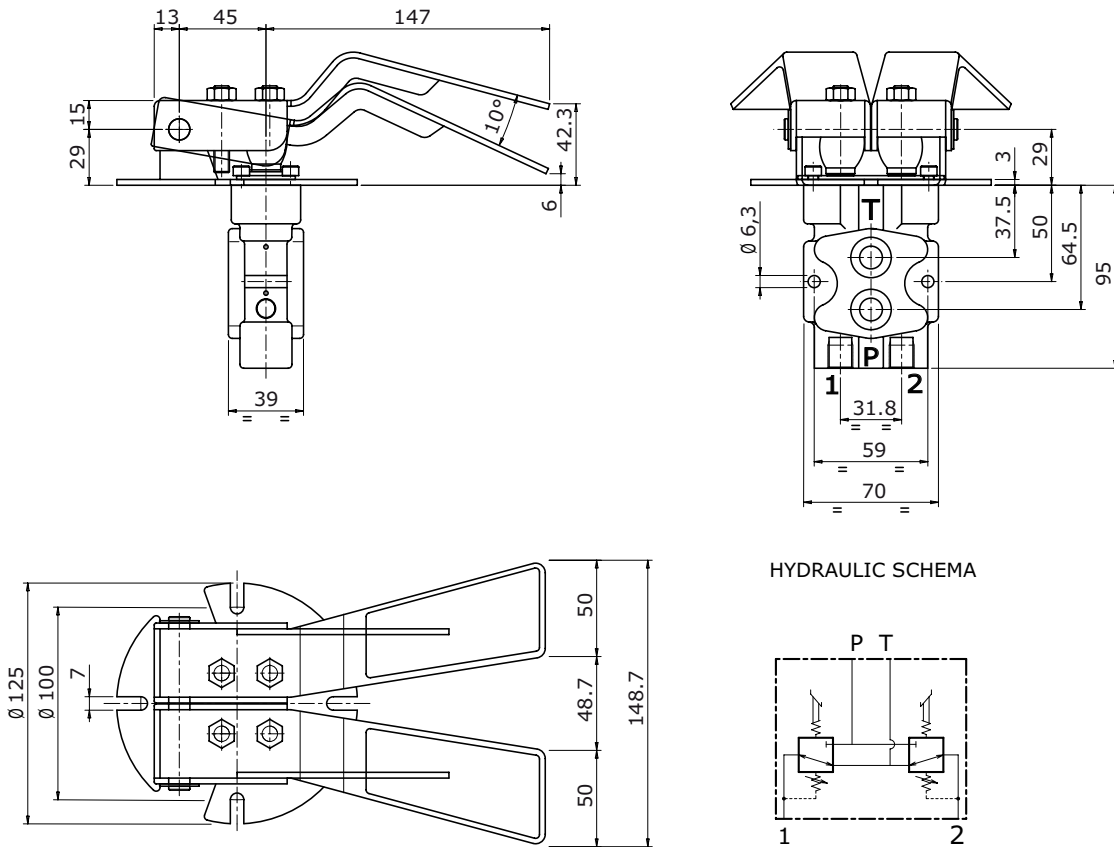
Oil capacity: **12 l/min**

Weight: **3,2 Kg**

### APPLICATIONS

Mini skid loaders, Mini dumper

### DIMENSIONS



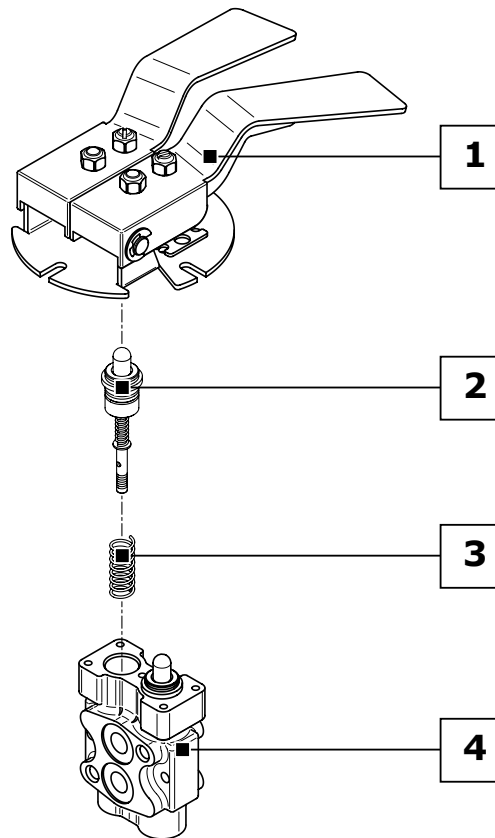


DOUBLE FOOT PEDAL LOWER PORTS **RCD**

ORDER EXAMPLE = RCD: 01S - A01 - MA - RA G02

- RCD product type \_\_\_\_\_
- 1 CONTROL CLASSIFICATION:** \_\_\_\_\_
- 01S** control type \_\_\_\_\_
- 2 METERING CURVE:** \_\_\_\_\_
- A01** curve type \_\_\_\_\_
- 3 RETURN SPRING:** \_\_\_\_\_
- MA** return spring type \_\_\_\_\_
- 4 BODY ARRANGEMENT:** \_\_\_\_\_
- RA** body specification \_\_\_\_\_
- G02** body thread \_\_\_\_\_

Ordering row 2 and 3, must be repeated for each port  
 complete sample: **RCD: 01S A01 MA A01 MA RA G02**



<b>1</b>	<b>CONTROL CLASSIFICATION:</b> (page 44)
<b>01S</b>	Foot pedal with return spring in neutral
<b>2</b>	<b>METERING CURVE:</b> (page 70)
<b>A01</b>	Linear metering curve with step
<b>B01</b>	Linear metering curve without step
<b>C01</b>	Broken line metering curve with step
<b>D01</b>	Broken line metering curve without step

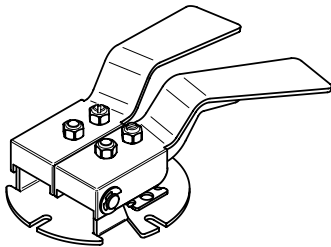
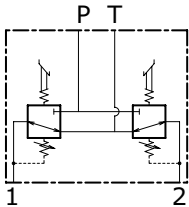
<b>3</b>	<b>RETURN SPRING:</b> (page 79)
<b>MA</b>	Preload 25 N - End stroke load 48 N
<b>MB</b>	Preload 14 N - End stroke load 27 N
<b>MC</b>	Preload 73 N - End stroke load 135 N
<b>MD</b>	Preload 89 N - End stroke load 169 N
<b>4</b>	<b>BODY ARRANGEMENT:</b> (page 45)
<b>RA G02</b>	Standard Body (G 1/4 ports)
<b>RA U02</b>	Standard Body (9/16"-18 UNF ports)



**RCD** DOUBLE FOOT PEDAL LOWER PORTS

**CONTROL KIT CLASSIFICATION**

The pedal RCD has only one configuration; for different applications refer to our Commercial Dept.

Code	Configuration	Schema	Description
01S			Foot pedal with return spring in neutral



**BODY ARRANGEMENT**

The foot pedal RCD has only one setting body, the only variable is represented by a different thread.

Code	Configuration	Schema	Description
RA G02			Standard body with ports G 1/4
RA U02			Standard body with ports 9/16" - 18 UNF