



# RCL 2 AXIS SINGLE LEVER REMOTE CONTROL WITH ELECTROMAGNETIC DETENT

RCL is a remote control specifically designed for Wheel Loaders application. Based on the design of RCX, it is used for two axis control (typically boom and bucket). It includes the function of electromagnetic detent to hold the lever at the end of the stroke: this feature is requested on loaders to allow the operator to start driving while boom and bucket functions are still moving.



### TECHNICAL SPECIFICATIONS

Max pressure: **40 bar**

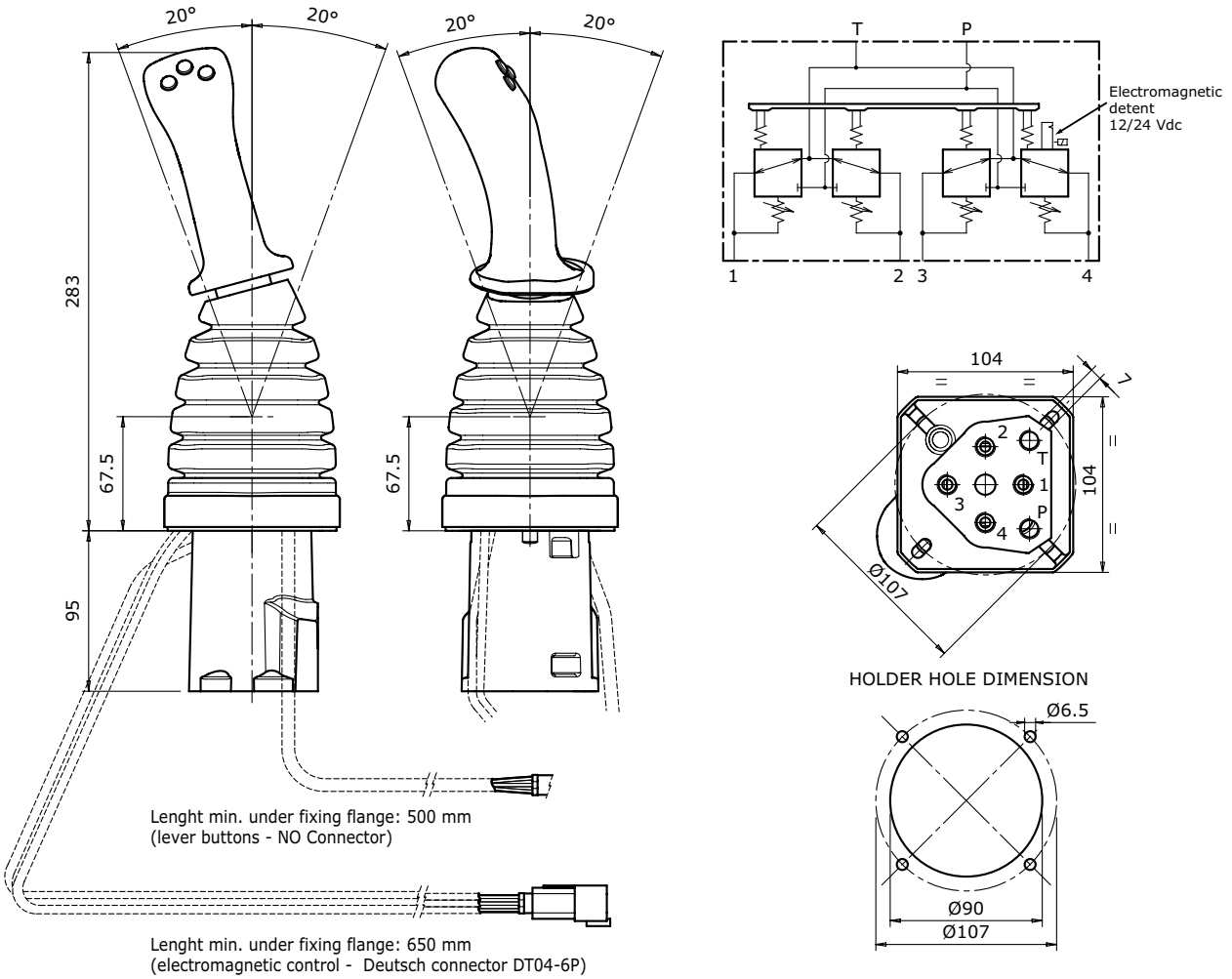
Oil capacity: **12 l/min**

Weight: **2,9 Kg**

### APPLICATIONS

Wheel loaders, Skid steer loader

### DIMENSIONS





## 2 AXIS SINGLE LEVER REMOTE CONTROL WITH ELECTROMAGNETIC DETENT

RCL

### ELECTROMAGNETIC DETENT TECHNICAL SPECIFICATION

Description	Value
Supply voltage	12 Vdc +/-20% - 24 Vdc +/-20%
Resistance at 20°C	22W - 94W
Power at 20°C	7W
Duty rating	ED100%
Coil insulation class (IEC 85)	H
Connector	Deutsch DT04-6P
Connector protection (EN 60529)	IP67

A 6-pole Deutsch DT04-6P connector is always used notwithstanding the number of required electromagnetic detents. The drawing here below shows the wiring of the solenoids assembled on the service ports 2, 3 and 4. The Deutsch DT06-6S connector counterpart can be supplied on request by quoting the order code 487200906.

Deutsch Connector (DT04-6P)

