



RCT DOUBLE FOOT PEDAL LOWER PORTS

RCT is a double pedal version remote control. It's a new family completing the broad range of remote control. Different pedal designs are available: flat, bent, extended bent for an optimal ergonomic solution. This pedal work according to the principle of direct-acting pressure reducing valves. In rest position, the foot pedal is held in neutral by return spring; inlet port P is closed and ports are connected to tank port T.



TECHNICAL SPECIFICATIONS

Max pressure: **100 bar**

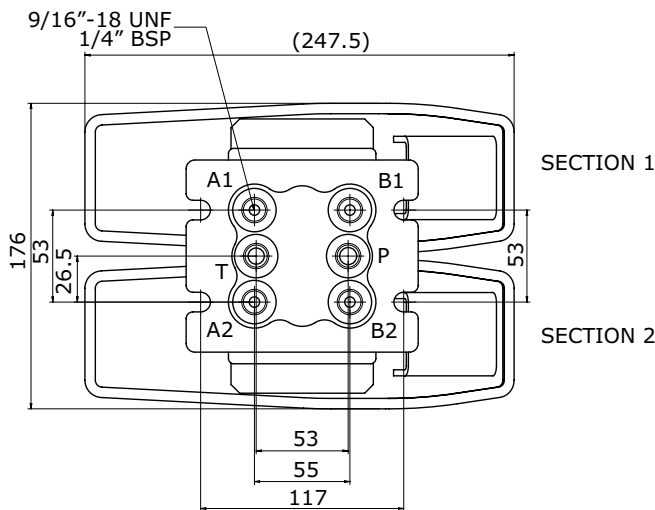
Oil capacity: **12 l/min**

Weight: **5,1 Kg**

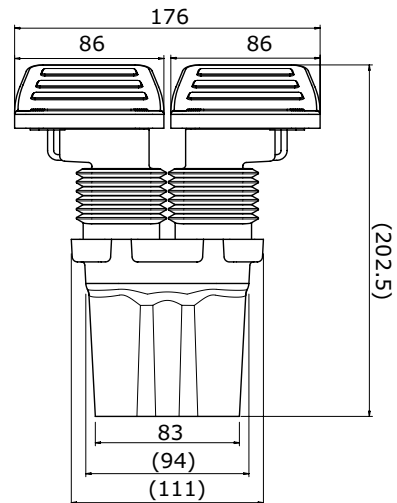
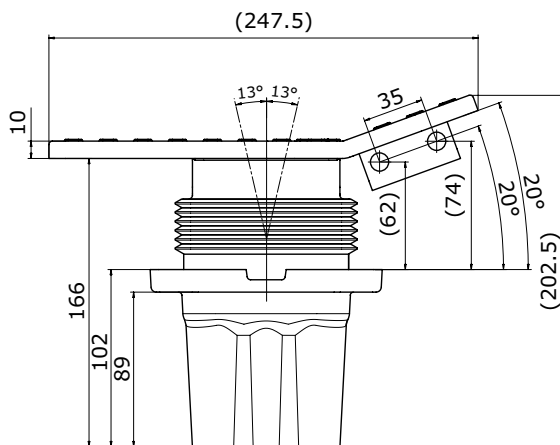
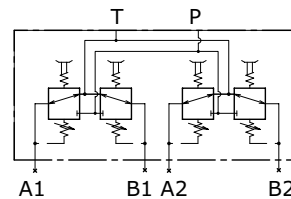
APPLICATIONS

Mini-excavators

DIMENSIONS

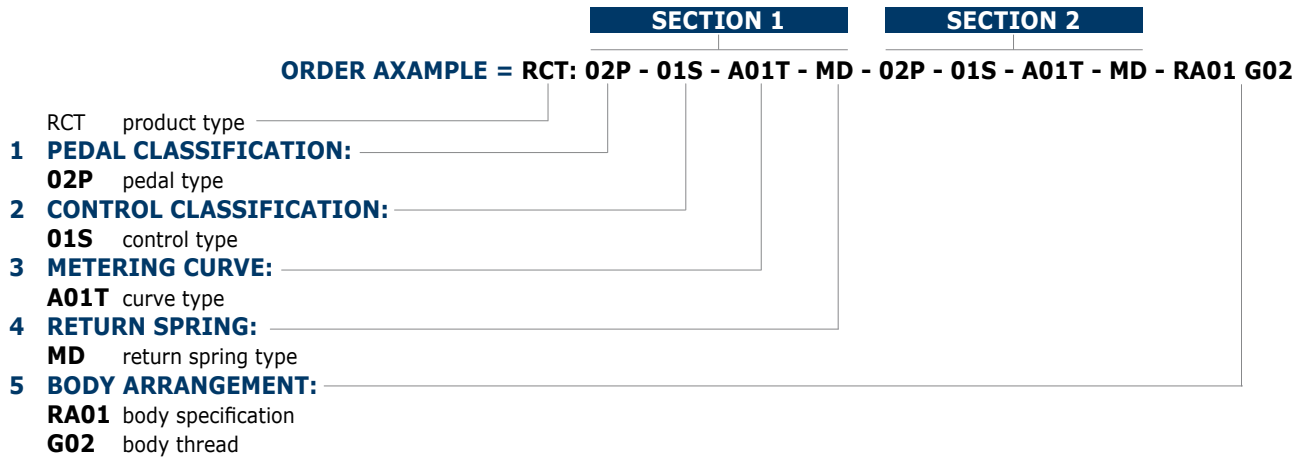


HYDRAULIC SCHEMA





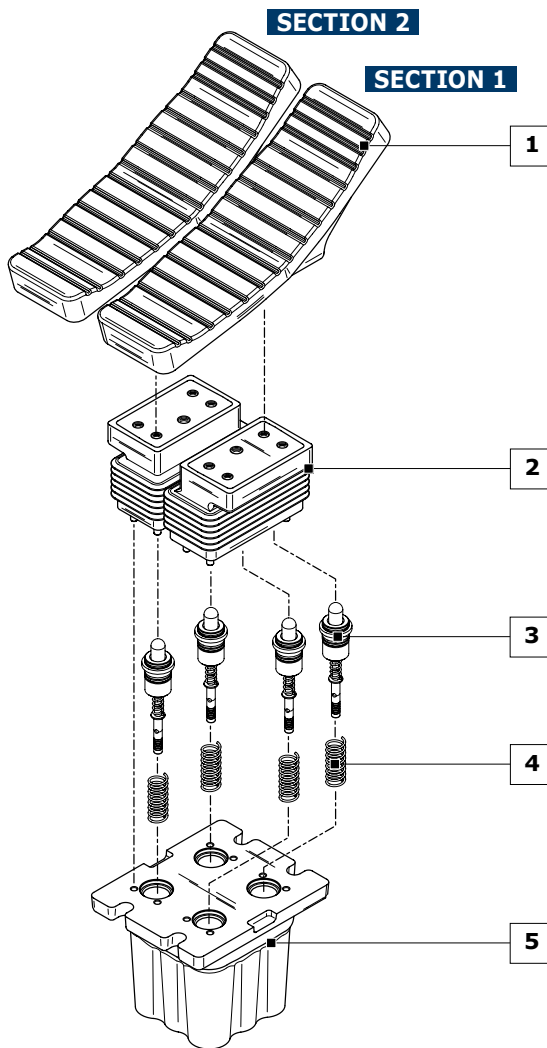
DOUBLE FOOT PEDAL LOWER PORTS **RCT**



Ordering row 1, 2, 3, and 4 must be repeated for each section. Each section contains 2 curves and 2 springs.

COMPLETE EXAMPLE

RCT: 02P 01S A01T MD A01T MD - 02P 01S A01T MD A01T MD - RA01 G02



1	PEDAL CLASSIFICATION: (page 54)
00P	Without pedal (prearrangement)
01P	Standard flat pedal
02P	Short pedal tilted 30°
03P	Long pedal tilted 30°
2	CONTROL KIT CLASSIFICATION: (page 55)
01S	Control kit with bellows
2	METERING CURVE: (page 74)
A01T	Linear metering curve with step (tipo A)
B01T	Linear metering curve without step (tipo B)
4	RETURN SPRING: (page 79)
MD	Preload 94 N - End stroke load 149 N
5	BODY ARRANGEMENT: (page 56)
RA01 G02	P - T lower (G 1/4 ports)
RA02 G02	P - T side (G 1/4 ports)
RA11 G02	P - T front A - B lower (G 1/4 ports)
RA12 G02	A - B - P - T side (G 1/4 ports)
RA01 U02	P - T lower (9/16-18 UNF ports)
RA02 U02	P - T side (9/16-18 UNF ports)
RA11 U02	P - T front A - B lower (9/16-18 UNF ports)
RA12 U02	A - B - P - T side (9/16-18 UNF ports)



RCT DOUBLE FOOT PEDAL LOWER PORTS

PEDAL CLASSIFICATION

All controls installed on the foot pedal RCT are interchangeable. Pedals represented correspond to standard configurations; for different applications contact our Commercial Dept.

Code	Dimensions	Configuration	Description
00P			Without pedal (prearrangement)
01P			Standard flat pedal with rubber protection
02P			Short pedal tilted 30° with rubber protection
03P			Long pedal tilted 30° with rubber protection



CONTROL KIT CLASSIFICATION

Only one configuration is available; for different applications contact our Commercial Dept.

Code	Dimensions	Configuration	Description
01S			Control kit with bellows

Metering curves are available equipped with a swing-preventing dampening device; for more informations contact our Commercial Dept.



RCT DOUBLE FOOT PEDAL LOWER PORTS

STANDARD BODY ARRANGEMENT

The listed configurations are all the possible combinations that can be obtained with the RCT standard body; two different pitch threads are available; for different applications contact our Commercial Dept.

Code	Configuration	Description
RA01 G02		Standard body (ports P - T lower) with ports G 1/4
RA01 U02		Standard body (ports P - T lower) with ports 9/16" - 18 UNF
RA02 G02		Body (ports P-T side) with ports G 1/4
RA02 U02		Body (ports P-T side) with ports 9/16" - 18 UNF
RA03 G02		Body (ports A-B-P-T side) with ports G 1/4
RA03 U02		Body (ports A-B-P-T side) with ports 9/16" - 18 UNF



DOUBLE FOOT PEDAL LOWER PORTS **RCT**

BODY WITH SHUTTLE VALVE ARRANGEMENT

Bodies are available equipped with integrated shuttle valves to generate additional signals. The RA11 configuration includes a fifth port activated when any one of the four service ports is actuated (for safety, alert or brake release functions).

code	configuration	description
RA11 G02		Standard body with shuttle valves with ports G 1/4
RA11 U02		Standard body with shuttle valves with ports 9/16" - 18 UNF