



RCY 2 AXIS SINGLE LEVER REMOTE CONTROL REDUCED OPERATING FORCE

The new RCY hydraulic remote control is an evolution of the RCX model. It adds to the variety of options and solutions offered by RCX with an upgraded hydraulic control system, allowing the operating comfort to be improved; the reduced-diameter control spool allows the required operating effort to be reduced by approximately 30%, without affecting the control, hysteresis and accuracy characteristics of this device.



TECHNICAL SPECIFICATIONS

Max pressure: **100 bar**

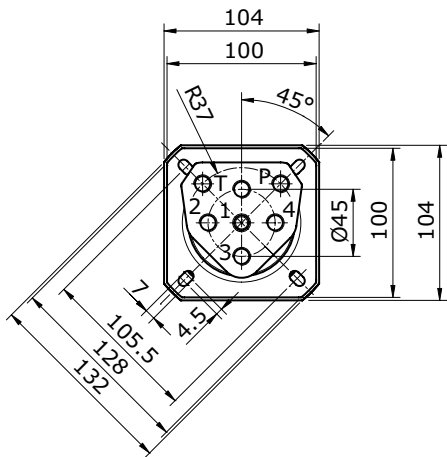
Oil capacity: **12 l/min**

Weight: **2,5 Kg**

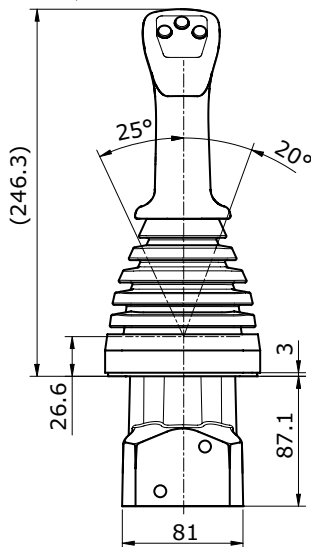
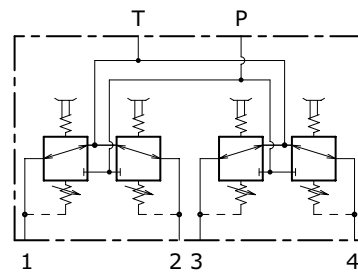
APPLICATIONS

Mini-excavators, Mini steer loaders, Backhoe loaders, Wheel loaders, Tractors, Boom mower

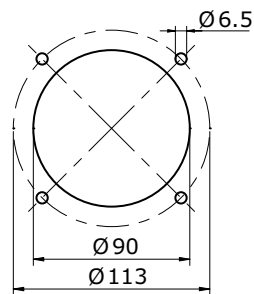
DIMENSIONS



HYDRAULIC SCHEMA



HOLDER HOLE DIMENSION



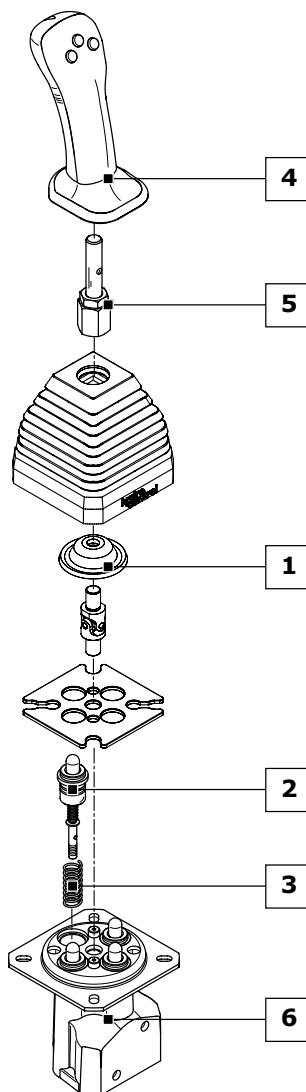


2 AXIS SINGLE LEVER REMOTE CONTROL REDUCED OPERATING FORCE **RCY**

ORDER EXAMPLE = **RCY: 03 - A01 - MB - F 03F 00R (2) - WF53 - RA G02**

- RCY product type
- 1) **CONTROL CLASSIFICATION:**
 - 03 control type
 - 2) **METERING CURVE:**
 - A01 curve type
 - 3) **RETURN SPRING:**
 - MB return spring type
 - 4) **HANDLE CLASSIFICATION:**
 - F handle type
 - 03F front buttons arrangement
 - 00R rear buttons arrangement
 - (2) handle position compared to ports
 - 5) **LEVER ROD CLASSIFICATION:**
 - WF lever rod type
 - 53 lever rod length
 - 6) **BODY ARRANGEMENT:**
 - RA body specification
 - G02 body thread

Ordering row 2 and 3, must be repeated for each port
complete sample: **RCY: 03 A01 MB A01 MB A01 MB A01 MB F 03F 00R 2 WF53 RA G02**



1	CONTROL CLASSIFICATION: (page 14)
01	Return spring in neutral
02	Return spring in neutral with detent in only one service port
03	Return spring in neutral with square bellows for straight lever rod
04	Return spring in neutral with square bellows for bent lever rod
2	METERING CURVE: (page 75)
A01	Linear metering curve with step
B01	Linear metering curve without step
C01	Broken line metering curve with step
D01	Broken line metering curve without step
3	RETURN SPRING: (page 79)
MA	Preload 25 N - End stroke load 48 N
MB	Preload 14 N - End stroke load 27 N
MC	Preload 73 N - End stroke load 135 N
MD	Preload 89 N - End stroke load 169 N
4	HANDLE CLASSIFICATION: (page 80)
A	Without micro-switch
B	With micro-switch to close
D	With dual micro-switch
F	Ergonomic handle
K	Spherical handle
5	LEVER ROD CLASSIFICATION: (page 13)
WF53	Straight standard lever for "F" handle
WG51	Bented standard lever for "F" handle
6	BODY ARRANGEMENT: (page 15)
RA G02	Standard Body (G 1/4 ports)
RB G02	Body with shuttle valve for translation (G 1/4 ports)