



150 SERIES INV



- **Materials**

Carbon Steel *EN -10277-3 /AISI 316L/ Brass*

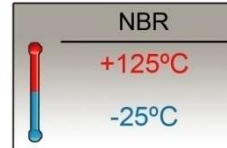
O-ring: NBR

Back-up-ring: PTFE

Balls: *AISI 1010/1015*

Springs: *Carbon Steel DIN 17233/84(B)*

- **Working temperature (O-ring)**



- **Applications:**

• Designed for Oil hydraulic.

- **Sectors:** Industrial. Building machinery.

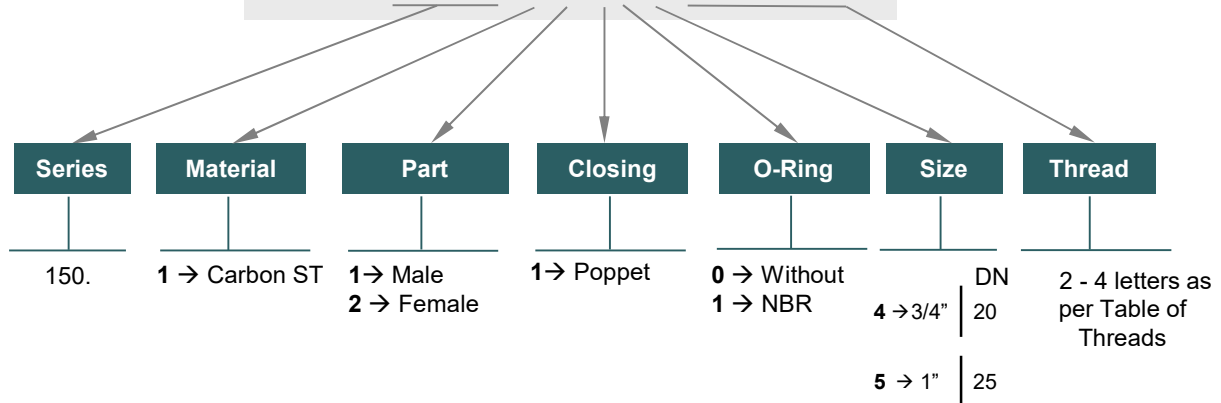


- **Equivalence:** FASTER TNV
SNAP-TITE H

MODEL STRUCTURE

Example:

150.12114AEORB



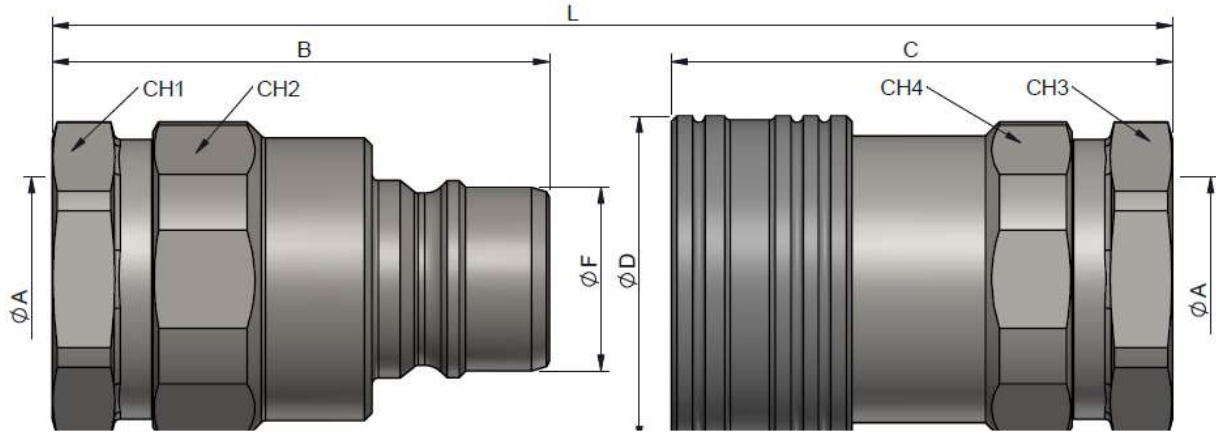
150-1



150 SERIES INV



DN20



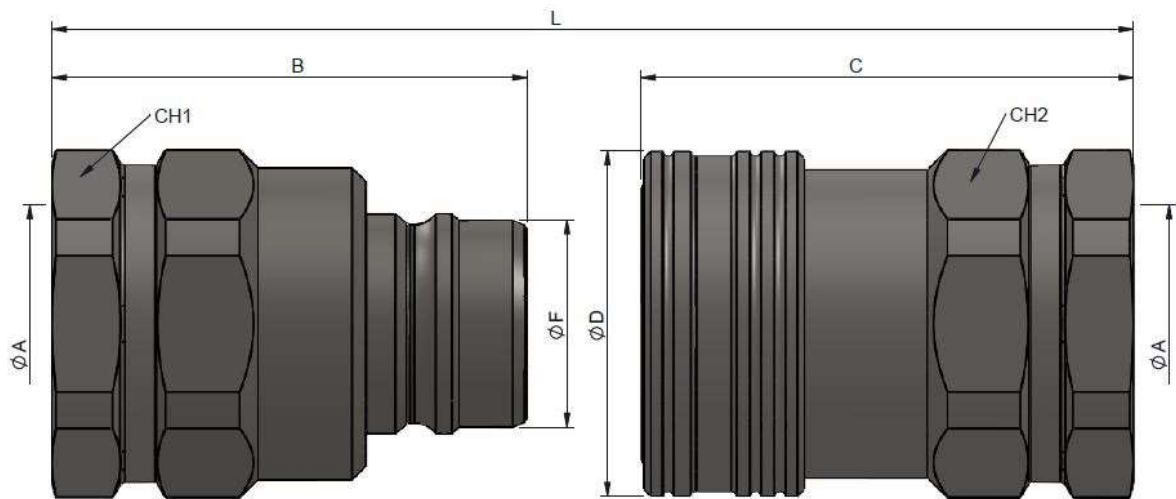
MALE STANDARD MODELS

FEMALE STANDARD MODELS

DN	ØA	REF.		B	CH1	CH2	ØF	L
20	3/4" BSP ORB	150.11114AEORB	190Bar	63.5	36	38	23.4	105.5
	3/4" NPTF	150.11114BE						

DN	ØA	REF.		C	CH3	CH4	ØD	L
20	3/4" BSP ORB	150.12114AEORB	190Bar	64	36	38	41.5	105.5
	3/4" NPTF	150.12114BE						

DN25



MALE STANDARD MODELS

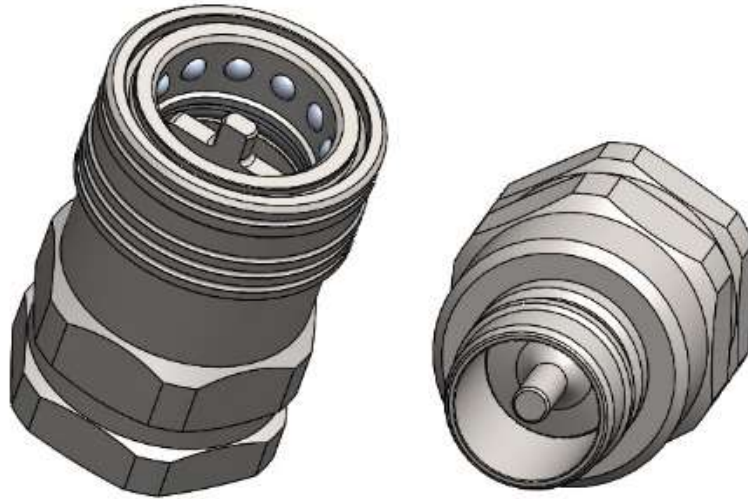
FEMALE STANDARD MODELS

DN	ØA	REF.		B	CH1	ØF	L
25	1" BSP ORB	150.11115AFORB	150Bar	68	46	29.7	115.5
	1" NPTF	150.11115BF					

DN	ØA	REF.		C	CH2	ØD	L
25	1" BSP ORB	150.12115AFORB	150Bar	70.5	46	49.5	115.5
	1" NPTF	150.12115BF					



150 SERIES INV

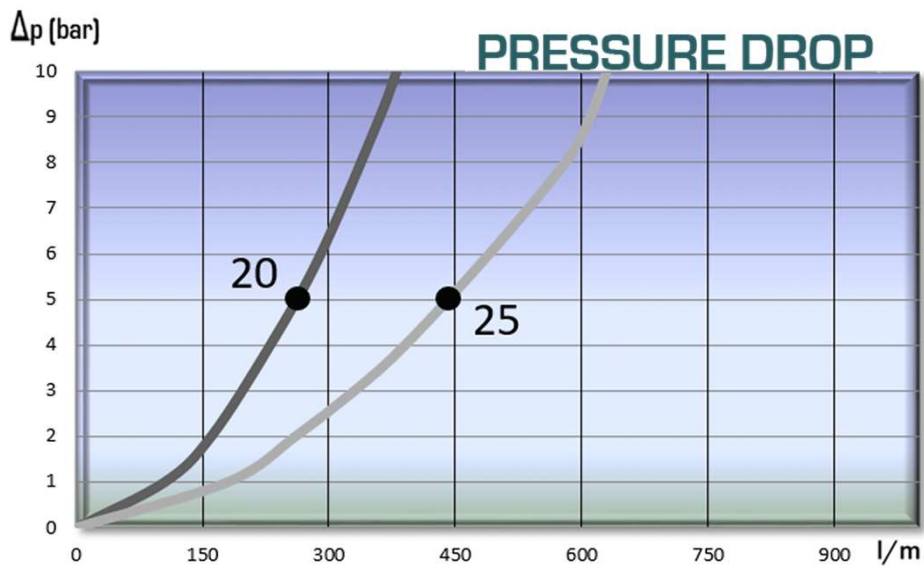


TECHNICAL DATA

Carbon Steel

DN	Max. Flow	Connection Force	Min. Burst Pressure (bar)			Max. Working Pressure	Fluid Spillage
			Male	Female	Connected		
20	170 l/m	110N	760	760	760	190Bar	0,014 l
25	280 l/m	150N	600	600	600	150Bar	0,020 l

Test performed according to ISO 18869



150-3

INTEVA reserves the right to make modifications in its products without prior notice. Any external or internal alteration in our products will automatically void the warranty.

