



## Type EW... directional solenoid valves - 2 ways / 2 positions

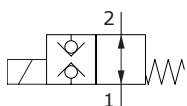
- Direct acting
- Poppet type
- Normally open and closed configurations
- With check in both directions
- From SAE08 to SAE12 cavities

Technical specifications and diagrams are measured with mineral oil of 46 cSt viscosity at 40°C (104°F) temperature.

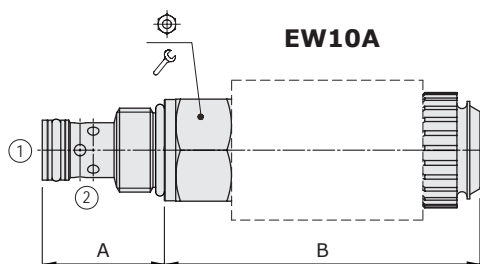
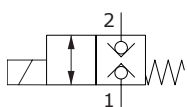
	EW08A	EW10A-EW10B	EW12B-EW12C
Nominal flow	10 l/min (2.64 US gpm)	25-30 l/min (6.6 - 7.9 US gpm)	50 l/min (13.2 US gpm)
Max. pressure	210 bar (3050 psi)		
Oil leakage	at 210 bar (3050 psi) 0.25 cm <sup>3</sup> /min (0.015 in <sup>3</sup> /min)	0.25 cm <sup>3</sup> /min (0.015 in <sup>3</sup> /min)	0.25 cm <sup>3</sup> /min (0.015 in <sup>3</sup> /min)
Fluid	mineral based oil		
Viscosity	10-200 cSt		
Max level of contamin.	18/16/13 ISO4406		
Fluid temperature	with NBR seals with FPM seals	from -20°C (-4°F) to 80°C (176°F) from -20°C (-4°F) to 100°C (212°F)	
Environmental temp. for working conditions	from -20°C (-4°F) to 50°C (122°F)		
Cavity	SAE 8/2	SAE 10/2	SAE 12/2
Coil type*	BT	BIN 19	BIN 22
Nominal voltages	12 VDC - 24 VDC ± 10%		
Power rating	21 W	29 W (12 VDC) - 31 W (24 VDC)	32.6 W (12 VDC) - 31 W (24 VDC)
Weight	0.16 kg (0.35 lb)	0.25 kg (0.55 lb)	0.44 kg (0.97 lb)

NOTE - For different conditions, please contact Walvoil Sales Dpt. - \*For coils further features see from page 187.

### Normally open configuration



### Normally closed configuration

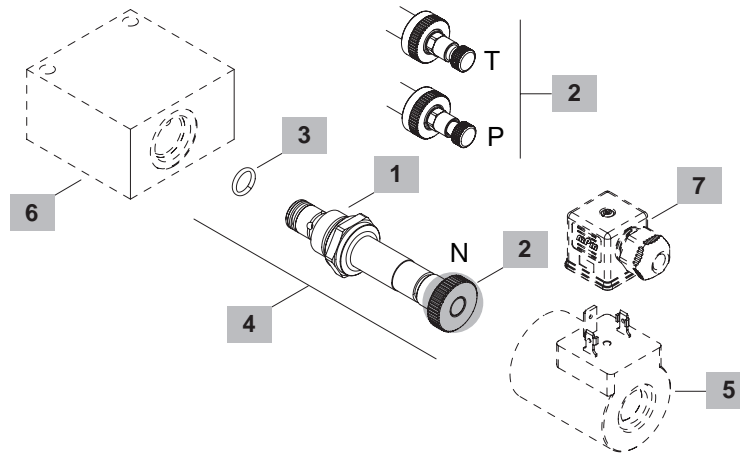
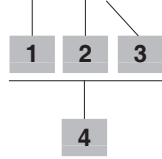


Valve type	A		B		⊕	⊕
	mm	in	mm	in		
EW08A/10NB	28.5	1.12	65.7	2.59	24	30 22
EW08A/20NB	28.5	1.12	70.9	2.79	24	30 22
EW10A/20PB	32.3	1.27	83.3	3.28	27	50 37
EW10B/10NB	32.3	1.27	99.8	3.93	27	50 37
EW12C/20PB	46	1.81	98.7	3.89	32	80 59
EW12B/10NB	46	1.81	102.8	4.05	32	80 59

For dimensions with different type of emergency see page 192

### Ordering codes and description composition

#### EW08A/10 NB



#### 1 Spool

TYPE	DESCRIPTION
<b>1</b>	Normally open configuration
<b>2</b>	Normally closed configuration

#### 2 Emergency

TYPE	DESCRIPTION
<b>N</b>	Without emergency
<b>T</b>	Screw type
<b>P</b>	Push button type (N.C.)

Note: emergency type depends on cavity type. See chapter 4 for availability.

#### 3 Seals

TYPE	DESCRIPTION
<b>B</b>	<b>NBR (Buna)</b> o-ring seals, std configuration
<b>V</b>	<b>FPM (Viton)</b> o-ring seals, contact Sales Dept.

#### 4 Cartridges

TYPE	CODE	DESCRIPTION
<b>SAE cavity 8/2</b>		
<b>EW08A/10NB</b>	0EW08002001	Normally open configuration (N.O.) without emergency
<b>EW08A/10TB</b>	0EW08002003	Normally open configuration (N.O.) with screw type emergency
<b>EW08A/20NB</b>	0EW08002006	Normally closed configuration (N.C.) Without emergency
<b>EW08A/20PB</b>	0EW08002004	Normally closed configuration (N.C.) with push button emergency
<b>EW08A/20TB</b>	0EW08002002	Normally open configuration (N.C.) with screw type emergency
<b>SAE cavity 10/2</b>		
<b>EW10B/10NB</b>	0EW10002004	Normally open configuration (N.O.) without emergency
<b>EW10A/20PB</b>	0EW10002002	Normally closed configuration (N.C.) with push button emergency
<b>SAE cavity 12/2</b>		
<b>EW12B/10NB</b>	0EW12002005	Normally open configuration (N.O.) without emergency
<b>EW12C/20PB</b>	0EW12002003	Normally closed configuration (N.C.) with push button emergency

#### 5 Coils

TYPE	CODE	DESCRIPTION
<b>BT 12VDC</b>	4SL3000120	12VDC-ISO4400 coil for EW08A
<b>BIN 19 VDC</b>	4SL6000121	12VDC-ISO4400 coil for EW10A-EW10B
<b>BIN 22 VDC</b>	4SL6000128	12VDC-ISO4400 coil for EW12A-EW12C

For complete coils list see from page 186

#### 6 Valve body

TYPE	CODE	DESCRIPTION
<b>SAE 08/2-SAE8</b>	3CC0820K11	Aluminium body for cavity 08 valve, SAE8 std thread
<b>SAE 10/2-SAE8</b>	3CC1020K11	Aluminium body for cavity 08 valve, SAE8 std thread
<b>SAE 12/2-SAE10</b>	3CC1220L11	Aluminium body for cavity 12 valve, SAE10 std thread

For steel bodies or different threading see page 194

#### 7 Connector

TYPE	CODE	DESCRIPTION
<b>ISO4400</b>	4CN1009995	Connector

For complete connectors list see from page 186

Rating diagrams

