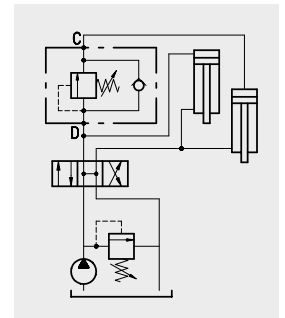


**Operation**

Allows for oil flow from D into C when the pressure in D achieves the spring setting value. Should back pressure arise in C, the valve opening pressure shall be same as the setting pressure plus the back pressure.



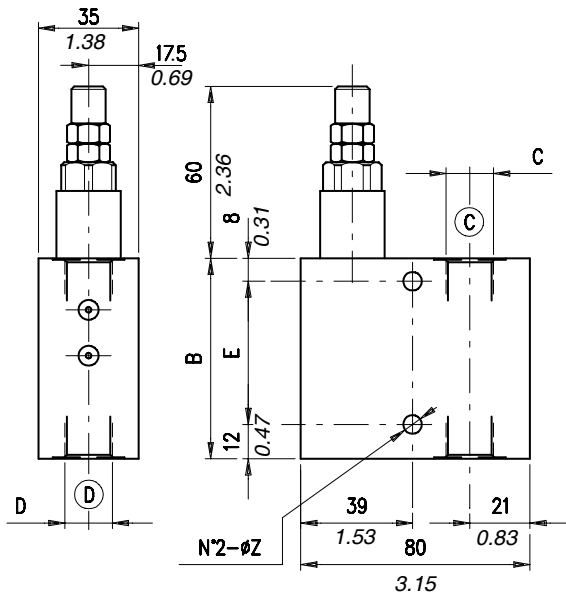
**Performance**

**Body Valves**

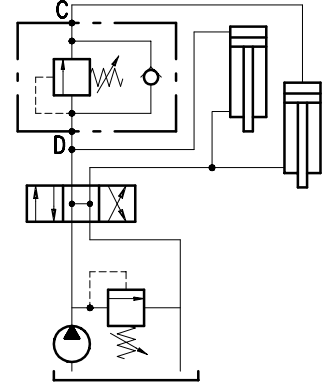
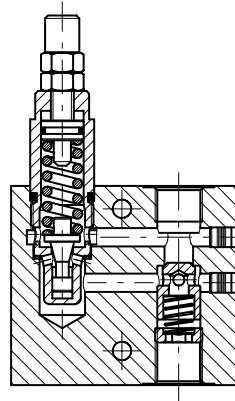
Type VDSRL	Maximum flow		Maximum pressure		Application range with standard springs	Cartridge used	Peso									
	l/min	US gpm	bar	psi			kg	lb								
VDSRL 03-14	10	2.6	210 alum. body	3050 alum. body	5÷50 bar - 72.5÷725 psi (test setting: 30 bar - 430 psi at 5 l/min. -1.3 US gpm)	MC08A	0.50	1.10								
					20÷220 bar - 290÷3200 psi (test setting: 160 bar - 2300 psi- at 5 l/min. -1.3 US gpm)		aluminium									
					180÷350 bar - 2600÷5100 psi- (test setting: 280 bar -4060 psi- at 5 l/min. -1.3 US gpm)		1.08	2.38								
VDSRL 5-38	25	6.6			350 steel body	5100 steel body	5÷40 bar - 72.5÷580 psi (test setting: 30 bar - 430 psi at 5 l/min. -1.3 US gpm)	VMP5	0,65	1.43						
							20÷80 bar - 290÷1150 psi (test setting: 60 bar -870 psi at 5 l/min. -1.3 US gpm)		aluminium							
							50÷220 bar - 725÷3200 psi (test setting: 160 bar -2300 psi at 5 l/min. -1.3 US gpm)		1,45	3.20						
VDSRL 5-12	35	9.2							180÷350 - 2600÷5100 psi (bar test setting: 280 bar - 4060 psi at 5 l/min. -1.3 US gpm)		0,70	1.54				
											aluminium					
											1,50	3.31				
VDSRL 5Y-38	25	6.6									5÷80 bar - 72.5÷1150 psi- (test setting: 60 bar -870 psi- at 5 l/min. -1.3 US gpm)	VMP5Y	0,65	1.43		
											40÷150 bar - 580÷2200 psi (test setting: 120 bar - 1800 psi at 5 l/min. -1.3 US gpm)		aluminium			
											140÷190 bar - 2050÷2750 psi (test setting: 150 bar - 2200 psi at 5 l/min. -1.3 US gpm)		1,45	3.20		
VDSRL 5Y-12	35	9.2									180÷350 bar - 2600÷5100 psi (test setting: 280 bar - 4060 psi at 5 l/min. -1.3 US gpm)		0,70	1.54		
													aluminium			
													1,50	3.31		
VDSRL 10-12	50	13									see test setting VDSRL 5 (38-12)	VMP10	1,00	2.20		
														aluminium		
														2,15	4.74	
VDSRL 10-34	70	18												1,10	2.42	
															aluminium	
															2,41	5.31
VDSRL 20-34	120	32											VMP20	1,80	3.97	
															aluminium	
															4,00	8.82
		steel														

\*To perform setting of the valve see the pressure drop/flow diagram

Dimensions and hydraulic circuit



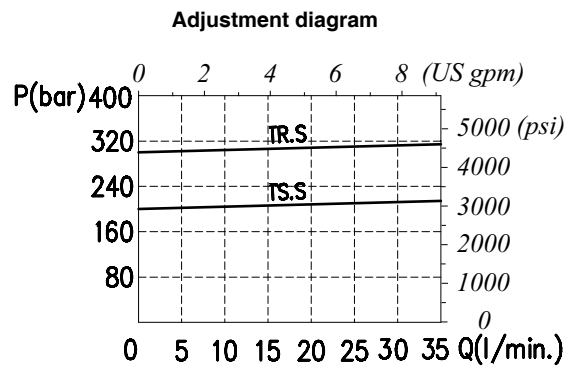
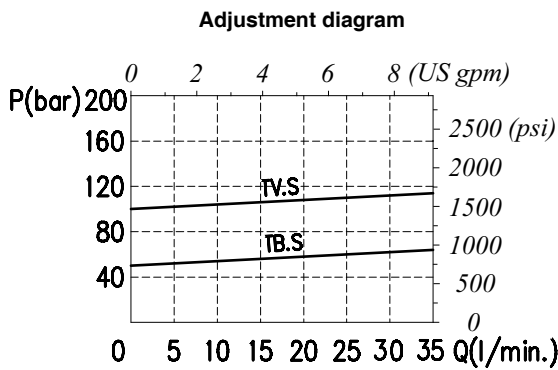
Section



VDSRL	B	C	D	E	Z
5-38	70 - 2.75	G 3/8	G 3/8	50 - 1.97	6.5 - 0.25
5-12	75 - 2.95	G 1/2	G 1/2	55 - 2.16	8.5 - 0.33

dimensions are in mm-in

Rating diagrams

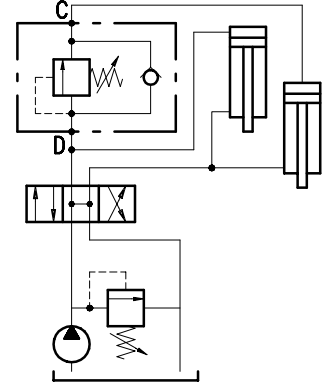
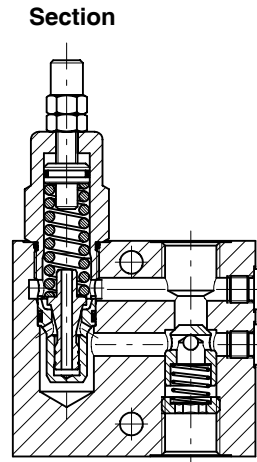
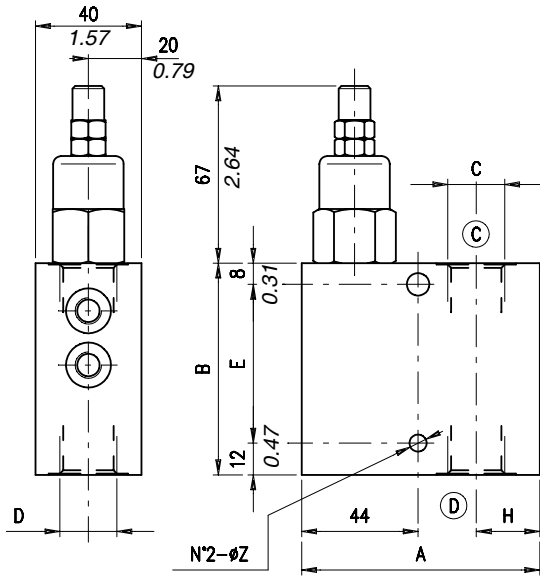


Order code

VDSRL 5 - □□ / □□ . □ / □□

Port size	Pressure settings	Adjustments (see page 80)	Body material
38) G 3/8 12) G 1/2	TB) 5÷50 bar (72.5÷725 psi) TV) 20÷80 bar (290÷1150 psi) TS) 50÷220 bar (725÷3200 psi) TR) 180÷350 bar (2600÷5100 psi)	S (screw) V (handknob) W (copped adjustment) P (panel mount)	_ Aluminium ac Steel

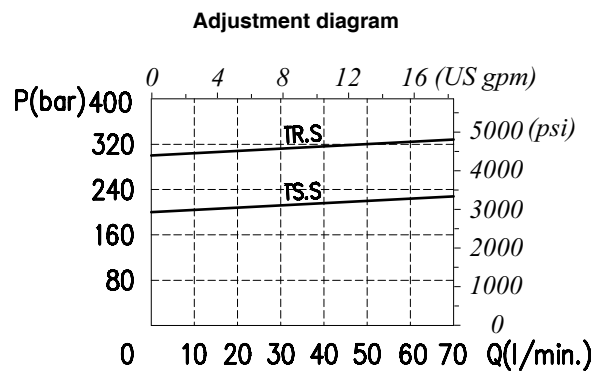
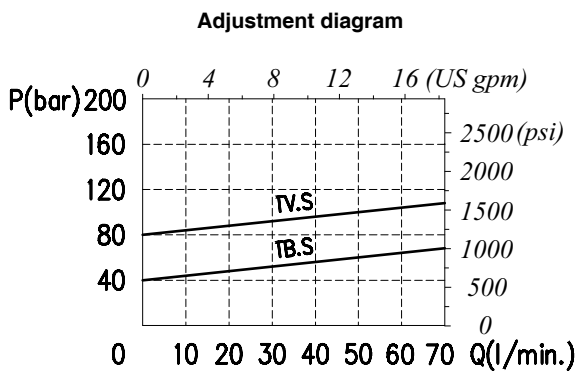
Dimensions and hydraulic circuit



VDSRL	A	B	C	D	E	H	Z
10-12	90-3.54	80-3.15	G 1/2	G 1/2	60-2.36	24-0.94	8.5-0.33
10-34	95-3.74	90-3.54	G 3/4	G 3/4	70-2.75	27-1.06	8.5-0.33

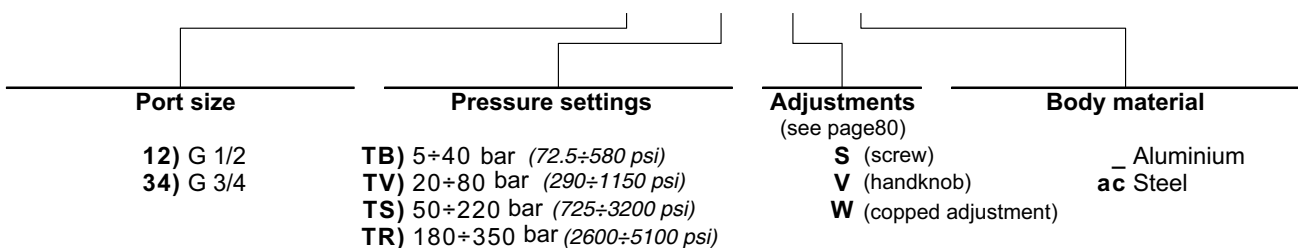
dimensions are in mm-in

Rating diagrams

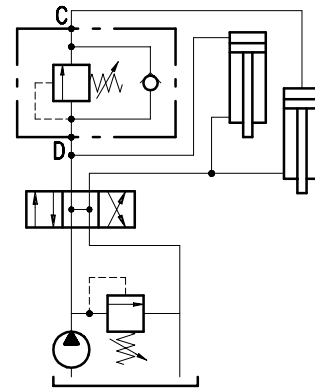
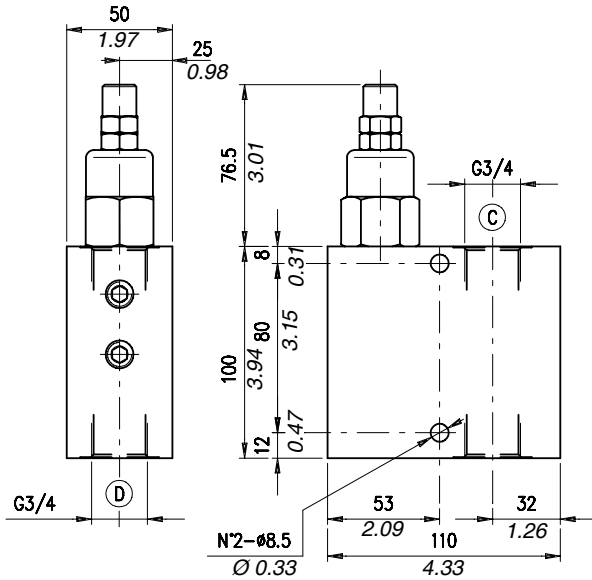


Order code

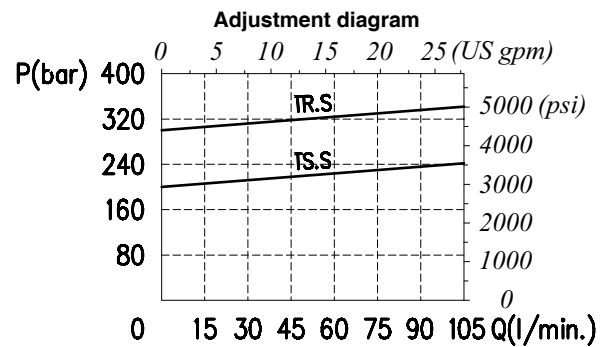
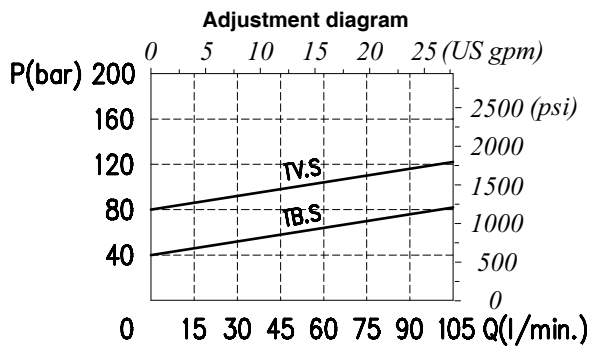
VDSRL 10 -□□ / □□ . □ / □□



## Dimensions and hydraulic circuit



## Rating diagrams



## Order code

VDSRL 20 - 34 / □□ . □ / □□

