



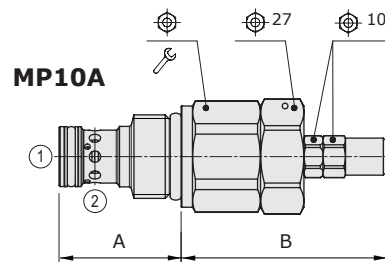
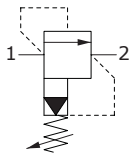
MP..A type pressure relief valves - 2 way

- Pilot operated
- Spool type
- From SAE10 to SAE12 cavities

Technical specifications and diagrams are measured with mineral oil of 46 cSt viscosity at 40°C (104°F) temperature.

	MP10A	MP12A
Nominal flow	60 l/min (16 US gpm)	100 l/min (26.4 US gpm)
Max. pressure	350 bar (5100 psi)	
Oil leakage	80% of max. pressure setting	25 cm ³ /min (1.525 in ³ /min)
Fluid	mineral based oil	
Viscosity	10-200 cSt	
Max level of contamination	20/18/14 ISO4406	
Fluid temperature	with NBR seals with FPM seals	from -20°C (-4°F) to 80°C (176°F) from -20°C (-4°F) to 100°C (212°F)
Environmental temp. for working conditions	from -20°C (-4°F) to 50°C (122°F)	
Cavity	SAE 10/2	SAE 12/2
Weight	0.190 kg (0.42 lb)	0.300 kg (0.661 lb)

NOTE - For different conditions, please contact Walvoil Sales Dpt.

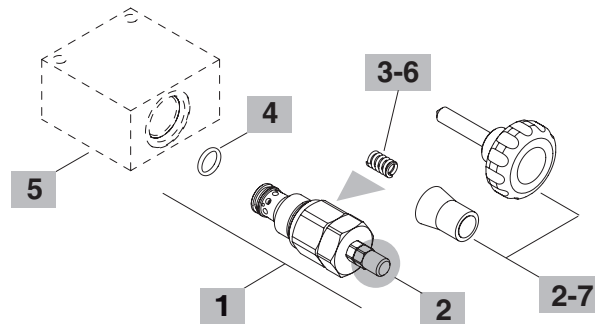
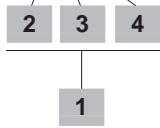


Valve type	A		B		⌀	⌘
	mm	in	mm	in		
MP10A/OS	32.3	1.27	54.5	2.15	27	50 37
MP12A/OS	46	1.81	52.5	2.07	32	80 59

For dimensions with different type of adjustment see page 212

Ordering codes and description composition

MP10A/0S2B



1 Cartridges

TYPE	CODE	DESCRIPTION
SAE cavity 10/2		
MP10A/0S1B	OMP10002017	Pressure range 1
MP10A/0S2B	OMP10002015	Pressure range 2
MP10A/0S3B	OMP10002018	Pressure range 3

SAE cavity 12/2

MP12A/0S1B	OMP12002003	Pressure range 1
MP12A/0S2B	OMP12002000	Pressure range 2
MP12A/0S3B	OMP12002005	Pressure range 3

2 Adjustments

TYPE	DESCRIPTION
S	Screw with cap
V	With handwheel (part code: see point 7)
X	Valve set with antitampering cap (part code: see point 7)

3 Pressure range

TYPE	DESCRIPTION
1	Pressure range 5÷50 bar (72.5÷725 psi)
2	Pressure range 50÷220 bar (725÷3190 psi)
3	Pressure range 150÷350 bar (2175÷5100 psi)

4 Seals

TYPE	DESCRIPTION
B	NBR (Buna) o-ring seals, std configuration
V	FPM (Viton) o-ring seals, contact Sales Dept.

5 Valve body

TYPE	CODE	DESCRIPTION
SAE 10/2-G 3/8	3CC1020C11	Aluminium body for cavity 10 valve, G 3/8 std thread
SAE 12/2-G 3/8	3CC1220D11	Aluminium body for cavity 12 valve, G 3/8 std thread

Note: aluminium body can stand up to 210 bar (3050 psi)
For steel bodies or different threading see from page 215

6 Springs

TYPE	CODE	DESCRIPTION
1	3ML1081400	Pressure range 1 - white band
2	3ML1081401	Pressure range 2 - no band
3	3ML1081402	Pressure range 3 - red band

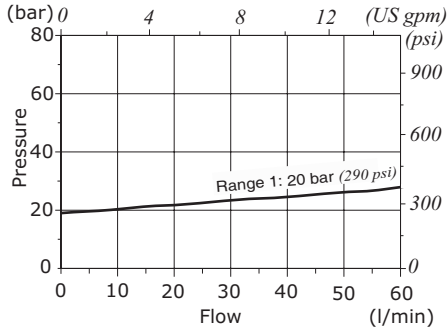
7 Accessories

TYPE	CODE	DESCRIPTION
-	4VL2307007	Handwheel (for MP10A valve)
-	4VL2307001	Handwheel (for MP12A and MP16A valves)
-	4COP116420	Antitampering cap

Rating diagrams

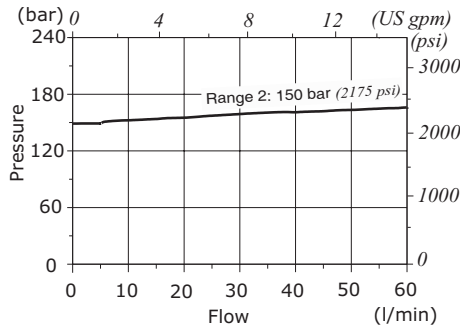
MP10A pressure vs. flow

Std. setting at 5 l/min (1.32 US gpm)



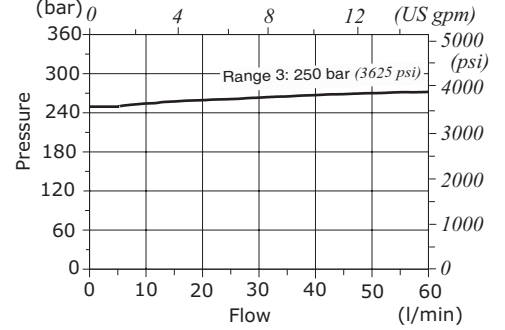
MP10A pressure vs. flow

Std. setting at 5 l/min (1.32 US gpm)



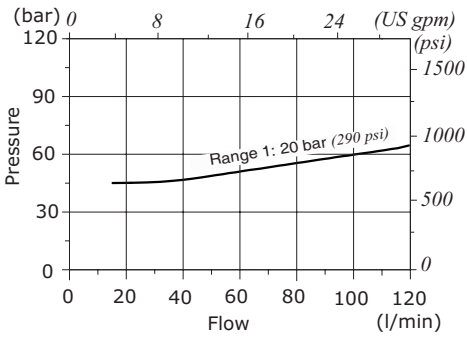
MP10A pressure vs. flow

Std. setting at 5 l/min (1.32 US gpm)



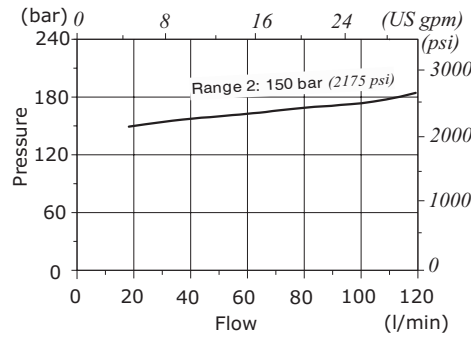
MP12A pressure vs. flow

Std. setting at 5 l/min (1.32 US gpm)



MP12A pressure vs. flow

Std. setting at 5 l/min (1.32 US gpm)



MP12A pressure vs. flow

Std. setting at 5 l/min (1.32 US gpm)

