



105 SERIES PSH



Manufactured according to ISO 7241-A and ISO 5675 norms.
Poppet Valve or Ball closing system.
BSP, NPTF, SAE/ORB threads. Other threads available upon request.

• Materials

Carbon Steel EN -10277-3
O-ring: NBR, Viton or EPDM
Back-Up-Ring: PTFE
Balls: AISI 1010/1015
Springs: Carbon Steel
DIN 17233/84(B)

• Working temperature (O-ring)

NBR o-rings	Viton o-rings	EPDM o-rings
+100°C	+200°C	+150°C
-30°C	-10°C	-40°C

• Applications: Designed for Oil hydraulic Applications.

• Equivalence

FASTER PV / CPV
ARGUS SVK
PARKER 4200

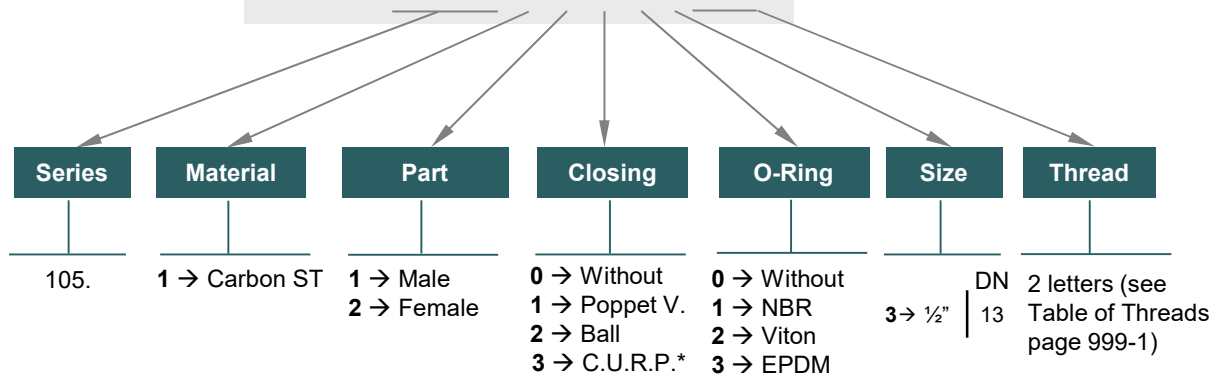
• Sectors: Industrial, Agricultural



MODEL STRUCTURE

Example:

105.11113 BD



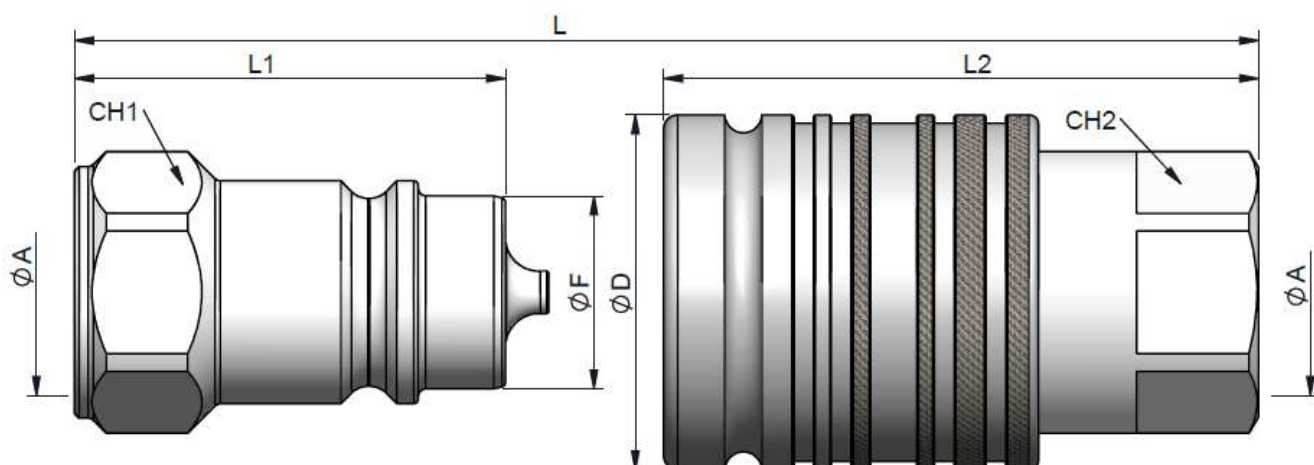
* DN13 available only.

105-1



105 SERIES PSH

DN13

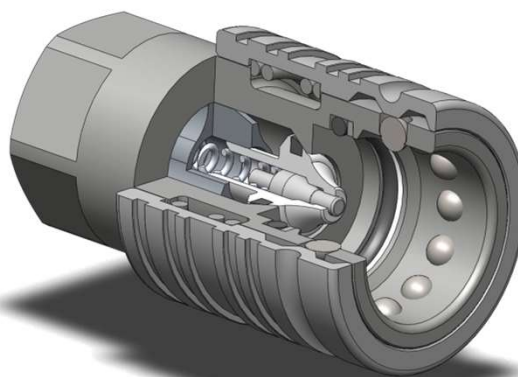
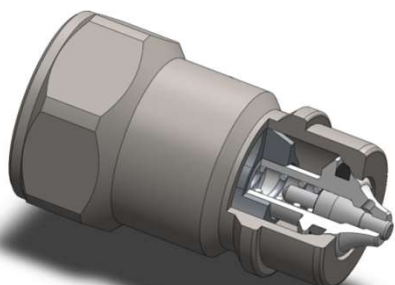


STANDARD MALE MODELS

DN	ØA	REF.		CH1	L1	ØF	L
13	1/2" BSP	101.11113AD		27o30	46	20.56	87.50
	1/2" NPTF	101.11113BD					
	M22X1.5	101.11113NG		27o30			
	3/4" - 16ORB	101.11113GF		27o30			
	7/8" 14ORB	101.11113GH		27o30			

STANDARD FEMALE MODELS

DN	ØA	REF.		CH2	L2	ØE	L
13	1/2" BSP	105.12113AD		27	63.5	37.80	87.50
	1/2" NPTF	105.12113BD					
	M22X1.5	105.12113NG		27			



C.U.R.P. connection is available in DN13
Up to 300 Bar.



105 SERIES

PSH

PLUGS &
CAPS

INTEVA

PSH SERIES PLUGS/ CAPS have been designed to protect **FEMALE** (coupler) or **MALE** (nipple) parts while they are disconnected.

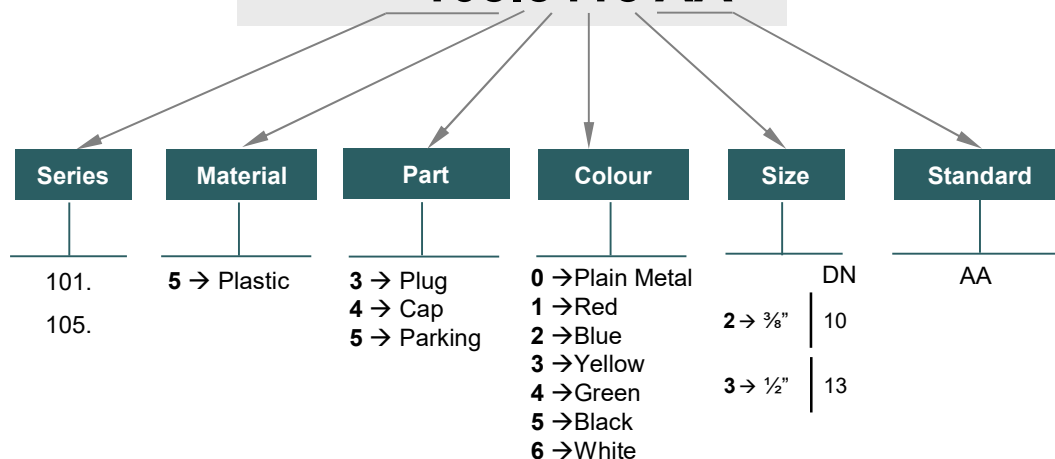
Manufactured according to ISO 7241-A norm, DN13 size meets as well ISO 5675 requirements.

MODEL STRUCTURE

For plugs/caps and parking parts

Example:

105.5413 AA



CAP						
DN	RED	BLUE	YELLOW	GREEN	BLACK	WHITE
10	105.5412AA	*	*	*	*	*
13	105.5413AA	*	*	*	*	*



PLUG						
DN	RED	BLUE	YELLOW	GREEN	BLACK	WHITE
10	101.5312AA	*	*	*	*	*
13	101.5313AA	*	*	*	*	*



CAP						
DN	RED	BLUE	YELLOW	GREEN	BLACK	WHITE
10	101.5412AA	*	*	*	*	*
13	101.5413AA	*	*	*	*	*

* Other colors available upon request.

105-3