

# M- HC6 ( 500 )



M- HC6

miniBOOSTER HC6

$P_{in} = 20 - 300$   
( )

$P_H = 500$   
( )

$Q = 100$  /

: 23

/ ). ( : ), ( - - ( ),

- 
- 
- 
- 
- 

M- HC6

**M- HC6-001**

1 1 ( 3/8" BSPP)

**M- HC6-002**

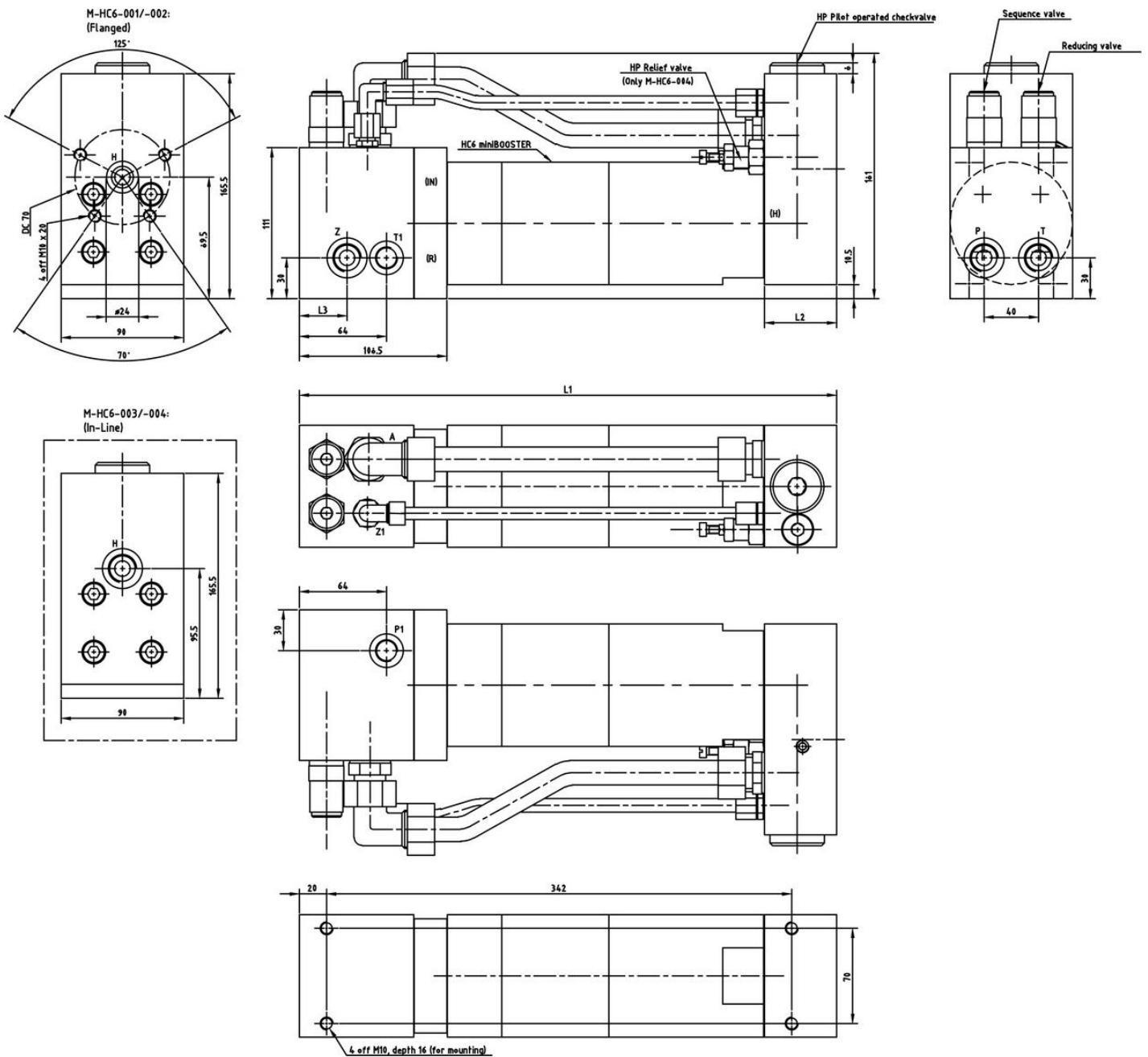
1 1 ( 1/2" BSPP)

**M- HC6-003**

1/2" BSPP

**M- HC6-004**

1/2" BSPP



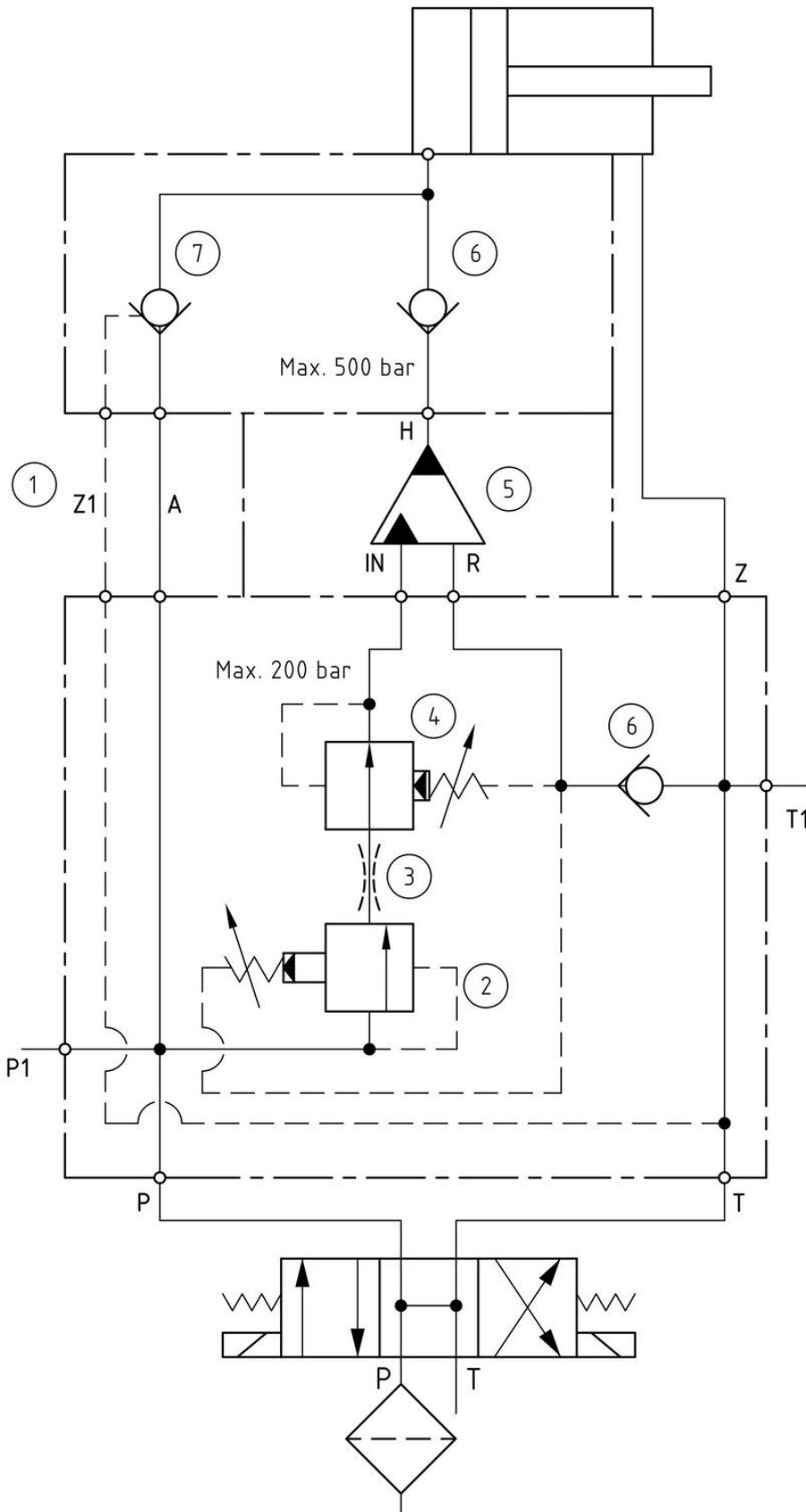
6-126

 PDF- Datei herunterladen: **6-122-05. Montagezeichnung. M- HC6-001**

 PDF- Datei herunterladen: **6-123-01. Montagezeichnung. M- HC6-002**

 PDF- Datei herunterladen: **6-124-01. Montagezeichnung. M- HC6-003**

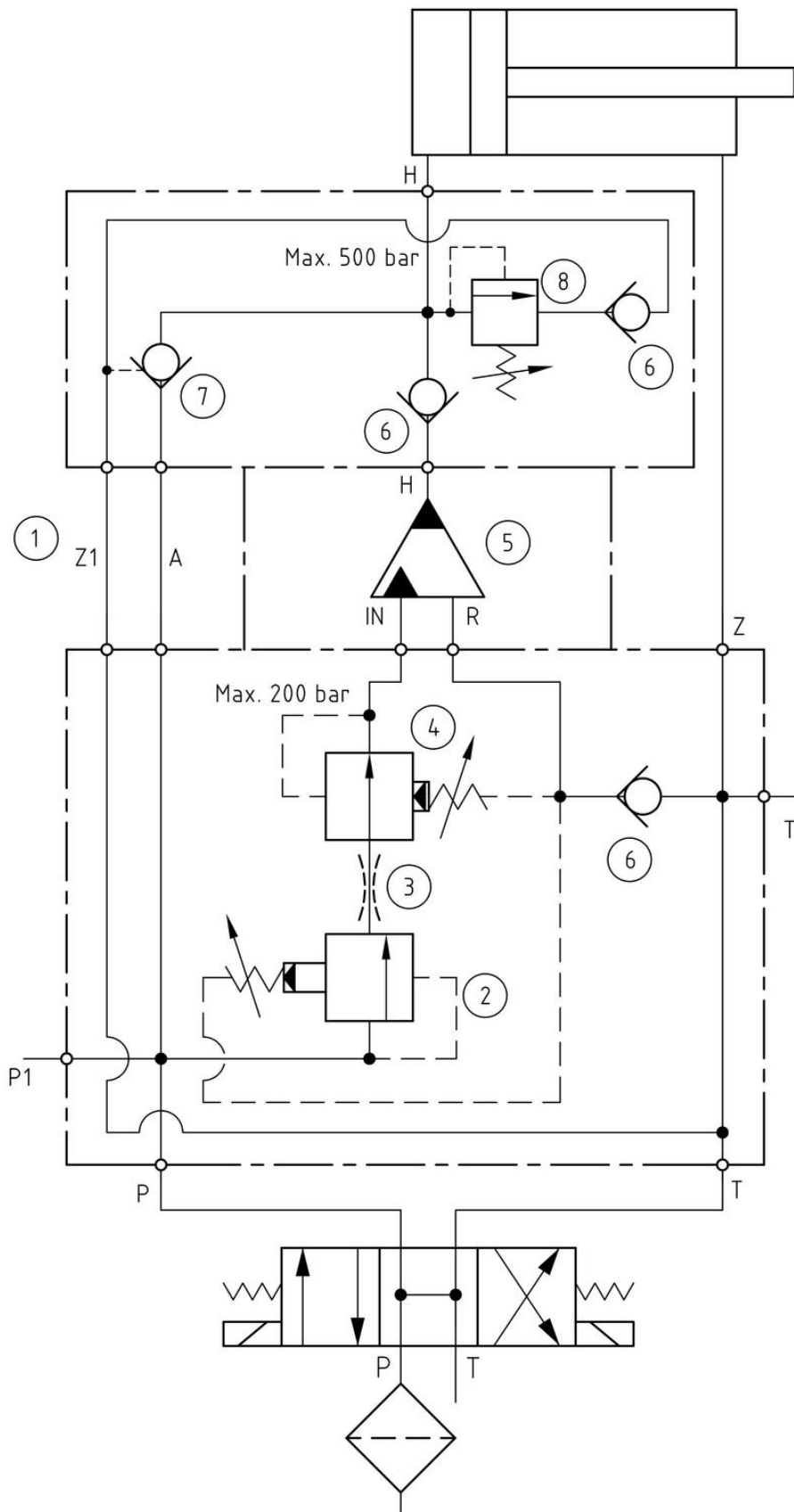
 PDF- Datei herunterladen: **6-125-02. Montagezeichnung. M- HC6-004**



- 1: By-pass system  
M-HC6-001 /-002 /-003
- 2: Sequence valve  
CP240-21B0AD0  
Cavity: C10-3  
Set: 90% of system pressure
- 3: (Option)  
Blind  $\varnothing$ \_\_ ; \_\_ L/min.
- 4: Pressure reducing valve  
CP230-4B0AC0 (Range:28-207 bar)  
Cavity: C10-3  
Set: Max. 200 bar
- 5: HC\_\_-\_\_-A-\_\_
- 6: Check valve (High pressure)  
RK 2
- 7: Pilot operated check valve  
(High pressure)  
RHC 4V

Download PDF file: **0-262-05. Function diagram. M- HC6-00**

**M- HC6-004**



- 1: By-pass system  
M-HC6-004 (✓) ✓
- 2: Sequence valve  
CP240-21B0AD0  
Cavity: C10-3  
Set: 90% of system pressure
- 3: (Option)  
Blind  $\varnothing$  \_\_\_; \_\_\_ L/min.
- 4: Pressure reducing valve  
CP230-4B0AC0 (Range:28-207 bar)  
Cavity: C10-3  
Set: Max. \_\_\_ bar
- 5: HC \_\_\_ - \_\_\_ - A - \_\_\_
- 6: Check valve (High pressure)  
RK 2
- 7: Pilot operated check valve  
(High pressure)  
RHC 4V
- 8: Pressure Relief Valve  
CMV 1B-500 (Range: 0-500 bar)  
Set: Max. \_\_\_ bar

Download PDF file: **0-289-02. Function diagram. M- HC6-004**

## miniBOOSTER M- HC6

[Translate to Russian:]

Model	Connections H	Options	Intensification
M- HC6-001	Flange	P1, T1 3/8" BSPP	1.9/2.5/3.3/4.0
M- HC6-002	Flange	P1, T1 1/2" BSPP	1.9/2.5/3.3/4.0
M- HC6-003	Tube 1/2" BSPP		1.9/2.5/3.3/4.0
M- HC6-004	Tube 1/2" BSPP	Relief valve on HP side	1.9/2.5/3.3/4.0

## miniBOOSTER M- HC6

M- HC6,

500

100 /  
HC6-2.5- A-1:

1/2" BSPP

M- HC6-003 – 2,5 – A – 1