

M- HC7 (2 000)



miniBOOSTER M- HC7

M- HC7 (20 200), 2 /
 2000
 M- HC7 10
 10 , M- HC7
 M- HC7
 : M- HC7 15 /
 . M- HC7 4",
 1%.

- 1
- 1 HC7 miniBOOSTER
- 1
- 1 4/3
- 1 10
- 1 0 - 2000
- 1
- 1
- 1
- 1

IN, M, P1 T: 1/4" BSPP
 : H 1/4" BSPP 120°

M- HC7

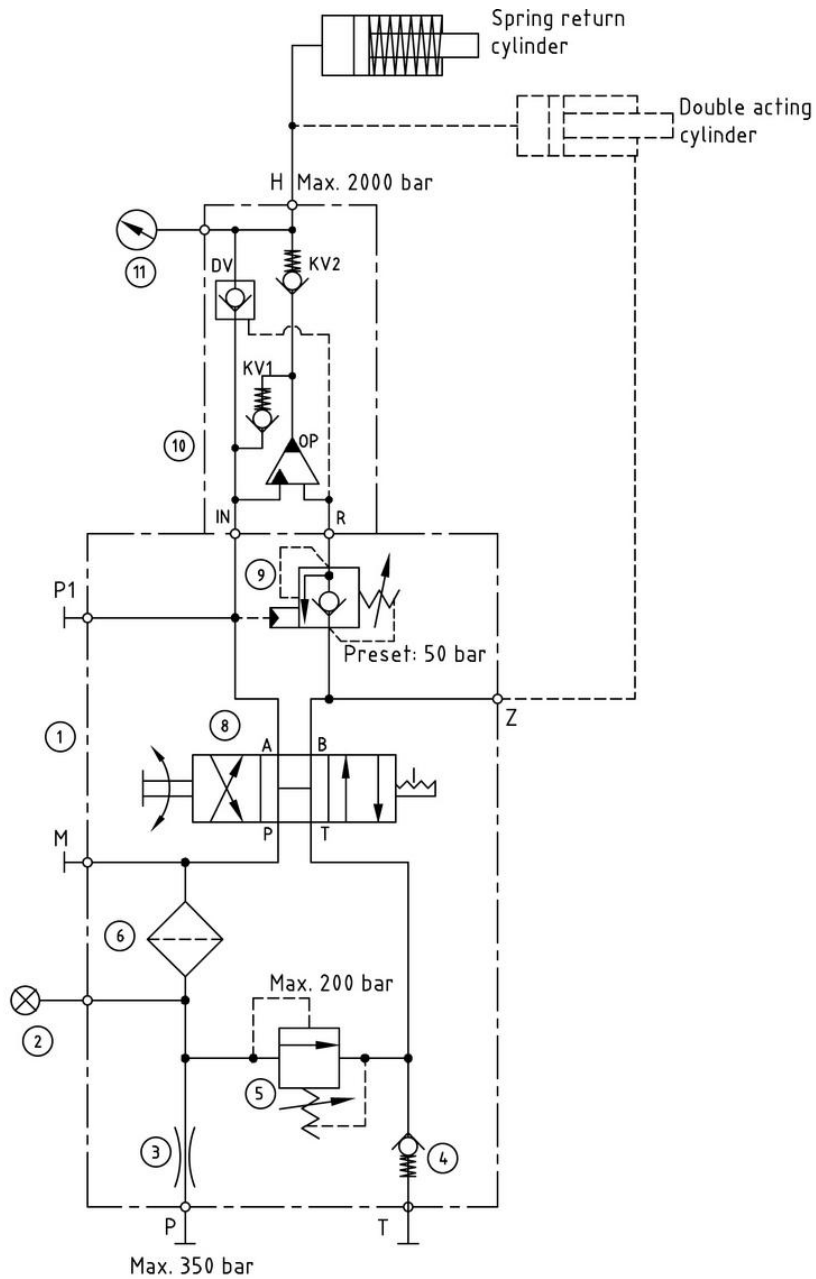
PP-805 (

FIL- NG6- CIE

PA-9F400- S (

0 - 250

M- HC7-001



Dimension drawing: PP-120

0-265 Model / Issue 05 -

200

miniBOOSTER M- HC7

M- HC7-001	6.6/9.0/13.0/20.0	B = ()	12
M- HC7-101	6.6/9.0/13.0/20.0		13

miniBOOSTER M- HC7

M- HC7 2000
HC7 i = 13,0, H1 M22 x 1,5 H2 19/16-18 UNF,
DV BSPP: HC7 - 13.0 - B - 12
HC7.

M- HC7-101 – 13,0 – B – 12