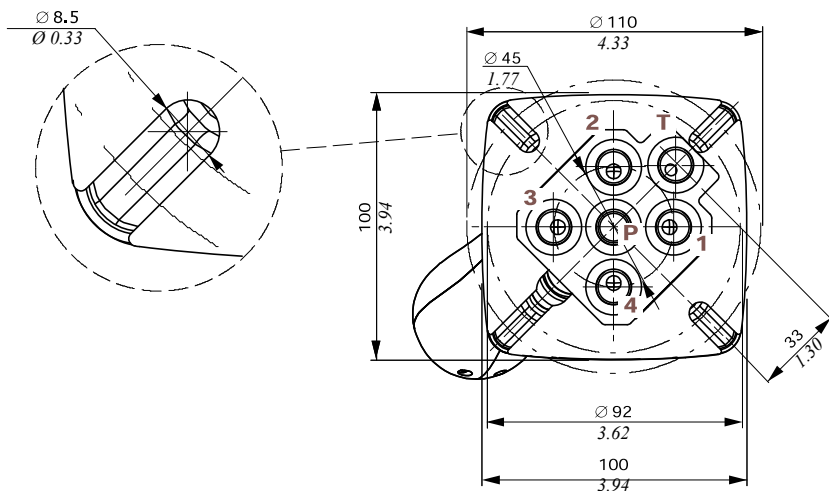


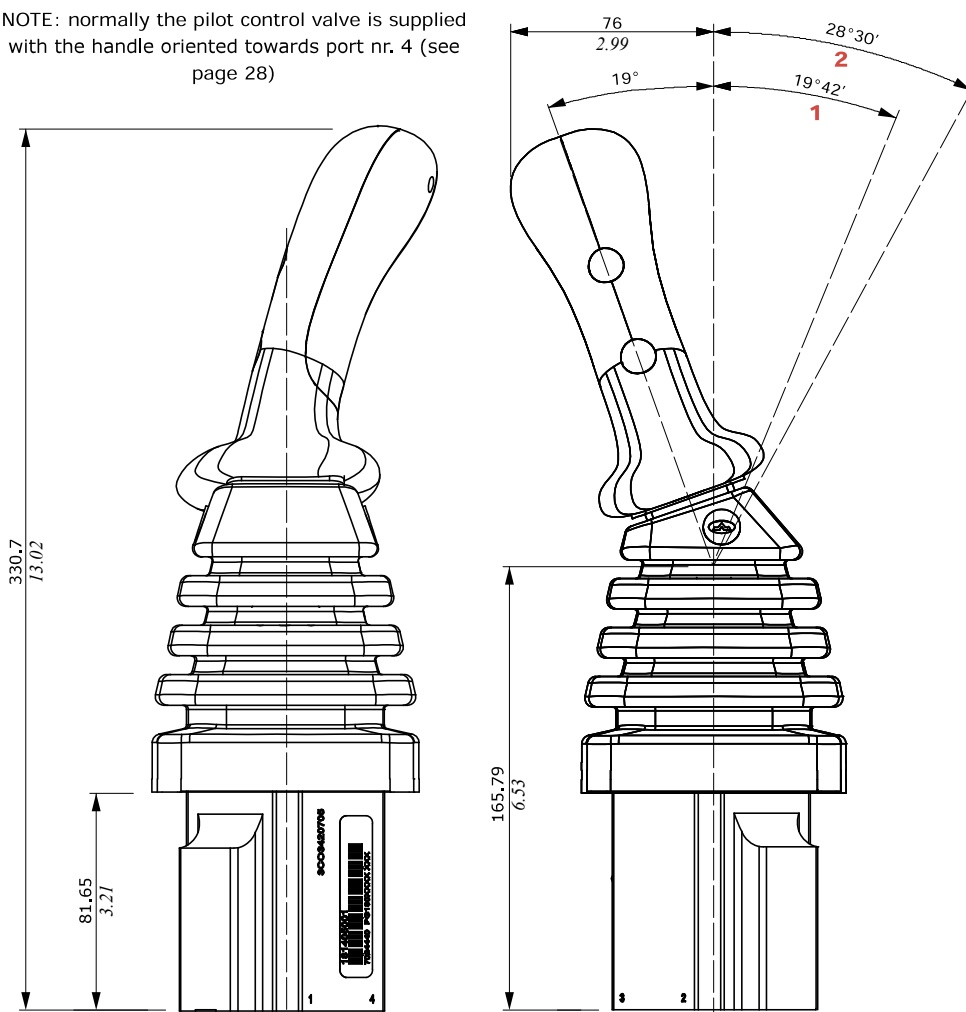
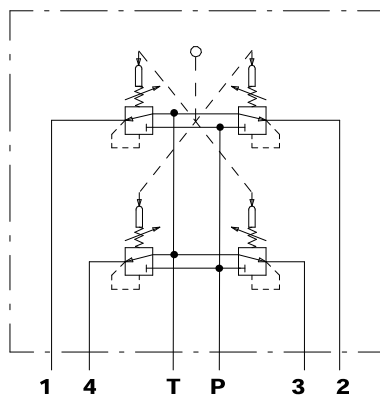
Dimensions and hydraulic circuit

Configuration with damping system.



NOTE: normally the pilot control valve is supplied with the handle oriented towards port nr. 4 (see page 28)

Hydraulic circuit



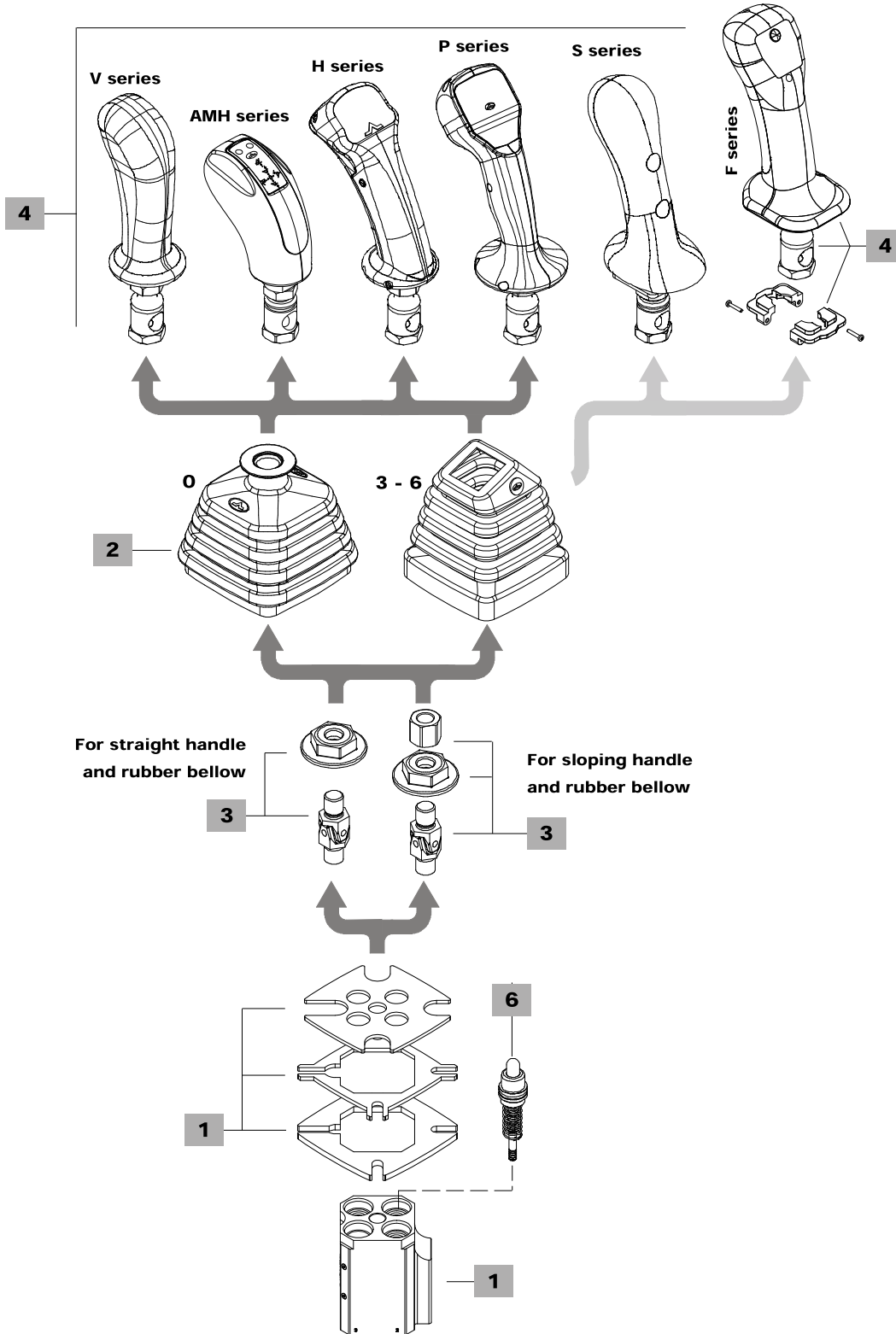
- 1 : Single work port
- 2 : Two simultaneous work ports

Ordering codes

SVM405 / 3 1 - B / 01 S108 (90) - 045(TM1M) - 0 0 089N M X 4 - <CRVN>

1
 2
 1
 3
 4
 5
 4
 6.1
 6.2
 6.3
 6.4
 6

Body is painted as standard, with one coat of primer black antirust paint



1 Body kit *

TYPE	CODE	DESCRIPTION
SVM405/1-B	5CO3420305	For rubber bellow square base

2 Rubber bellow

TYPE	CODE	DESCRIPTION
For V, H, P series handles		
0	3SOF111130	Straight type, square base with logo
3	3SOF111113	Sloping type, square base; only for 19° sloping handles. Not available for type 16 control
6	3SOF111114	As type 3 without logo. Not available for type 16 control

3 Control option

TYPE	CODE	DESCRIPTION
Spring return in neutral position		
01	5CIN4003	For V, H, P, S series handles and straight rubber bellow
	5CIN4001	For V, H, P, S series handles and sloping rubber bellow

With microswitches for movement detection on each port.
It needs type 7 rubber bellow and special body: please contact our Sales Department.

16	5CIN4023	For V, H, P, S series handles and straight rubber bellow
	5CIN4021	For V, H, P, S series handles and sloping rubber bellow

4 Handles

Some handles as examples are listed below: for technical specifications and full range of handles and other types of joint see the "Handles and hand levers" catalogue.

V series handle

TYPE: **V007** CODE: 5IMP030070
DESCRIPTION: Without switches with sloping 19° left joint

AMH series handle

TYPE: **AMH0400A9-6R2035-7R2035-8R2035-9R2035-(E2)**
CODE: 2IM3000004 DESCRIPTION: 4 push buttons with spring return, protection diode, with straight joint

H series handle

TYPE: **HA029-ORD040-2RD040-4RD040**
CODE: 2IM4100109 DESCRIPTION: 2 push buttons with spring return, "dead man" switch, with straight joint

P series handle

TYPE: **PZTA4100D9-ORD035-3R1D035-4R1D035-5R1D035-6R1D035-WN130035** CODE: 2IM8600007
DESCRIPTION: 1 proportional roller, 4 push buttons with spring return, "dead man" switch, with straight joint

F series handle

TYPE: **F02F-02R(1=8)**
CODE: 320000017+430533039+430033299
DESCRIPTION: 2 front and 2 rear push buttons with spring return + sloping 15° joint + adapter kit

S series handle

TYPE: **SZTA8-0G4045-XG122045**
CODE: 2IM5310003
DESCRIPTION: 1 proportional roller and front push button, with sloping 19° right joint

5 Handle position

TYPE	DESCRIPTION
(-)	STANDARD configuration, cable operation on work port 4: omitted in description
(90)	Mounted with 90° rotation step: cable operation on work port 1
(180)	Mounted with 180° rotation step: cable operation on work port 2
(270)	Mounted with 270° rotation step: cable operation on work port 3

6 Pressure control curves

For list available see from page 33

6.1 Curve type

TYPE	DESCRIPTION
0	Standard

6.2 Typology of curves

TYPE	DESCRIPTION
0	With step
1	Without step

6.3 Curve identification

Progressive number, see tables from page 33

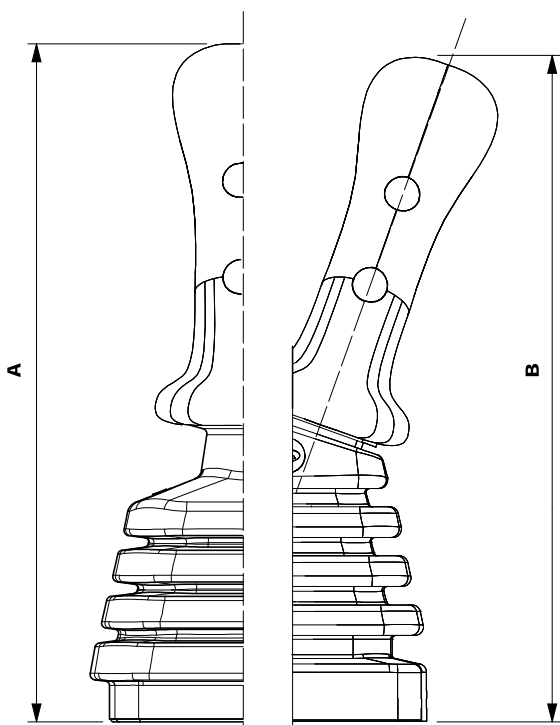
6.4 Return springs

TYPE	DESCRIPTION
M	Operation range from 18 to 25.5 N - <i>from 4.04 to 5.73 lbf</i>
A	Operation range from 23 to 35.2 N - <i>from 5.17 to 7.91 lbf</i>
B	Operation range from 23 to 68.1 N - <i>from 5.17 to 15.31 lbf</i>
C	Operation range from 89 to 176 N - <i>from 20 to 39.56 lbf</i>
D	Operation range from 110 to 220 N - <i>from 24.73 to 49.46 lbf</i>
E	Operation range from 138 to 276 N - <i>from 31 to 62.04 lbf</i>

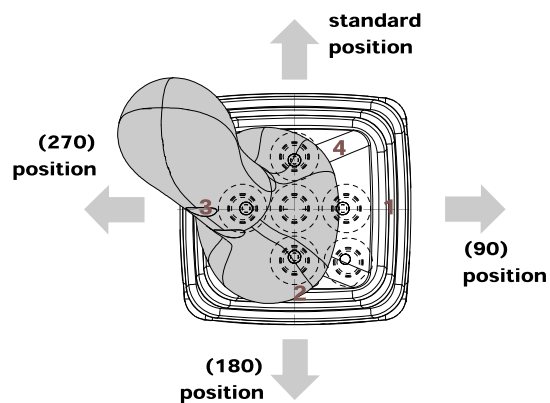
NOTE (*) – Codes are referred to **BSP** thread.

Configuration option

Handle options



Handle positions



Type	A		B	
	mm	in	mm	in
V series	239.2	9.42	237.2	9.34
H series	237.2	9.34	235.2	9.26
P series	256.2	10.09	254.2	10.01
S series	252.2	9.93	249.2	9.81