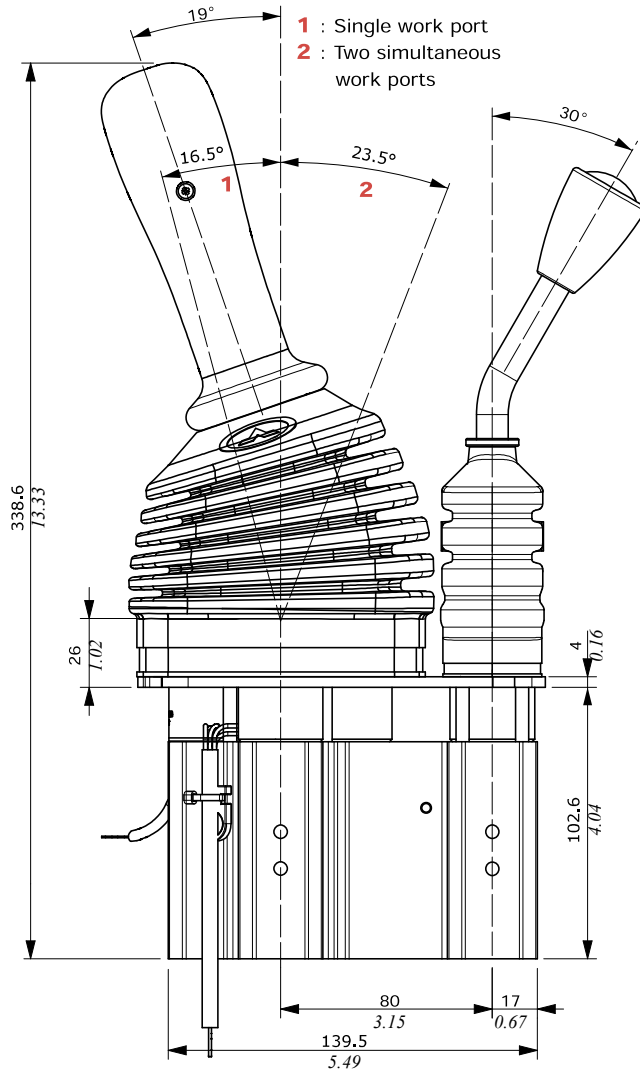
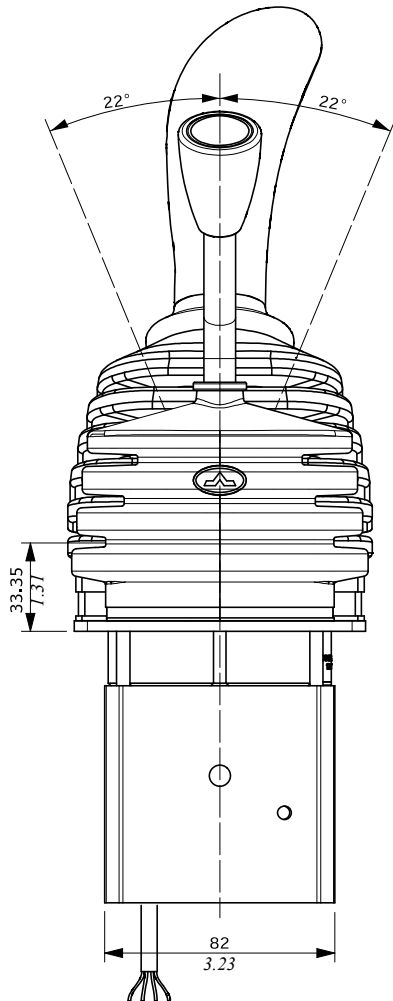
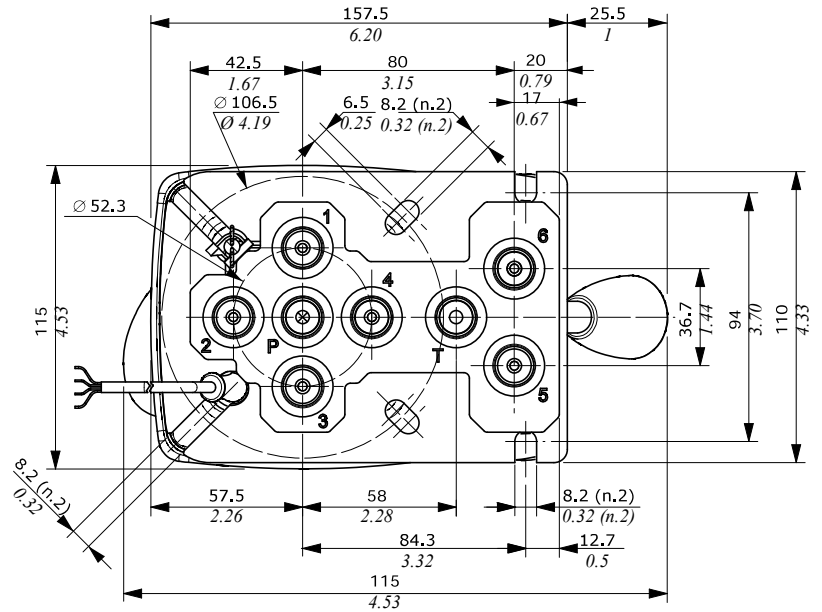
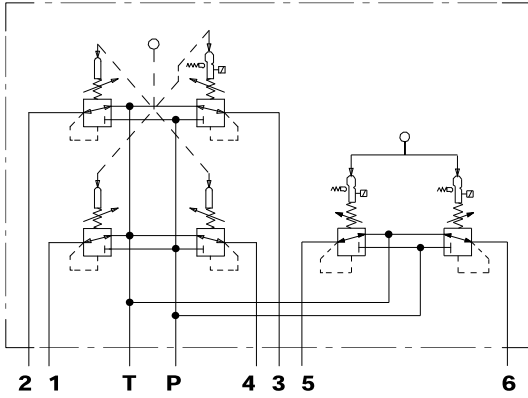


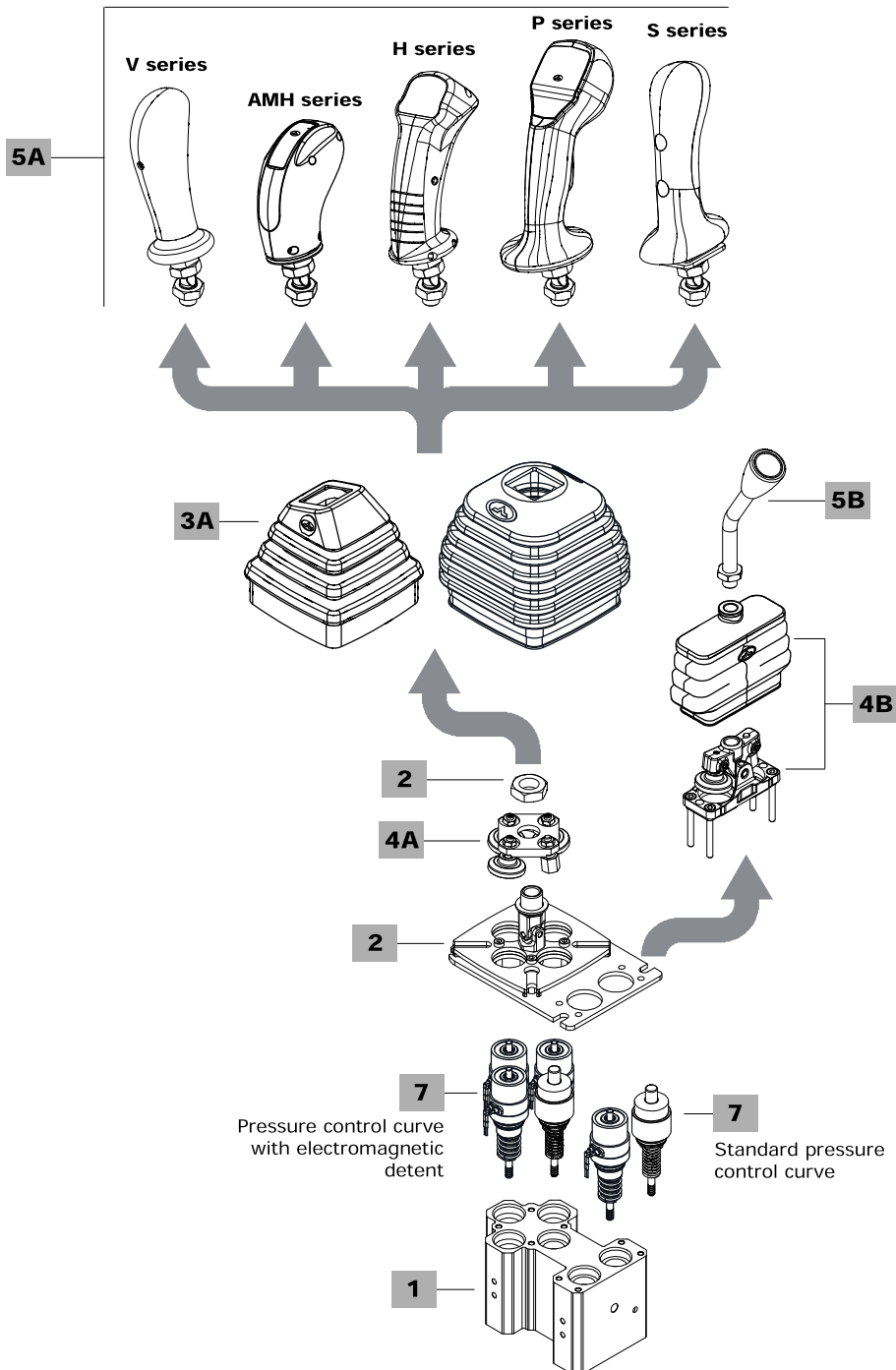
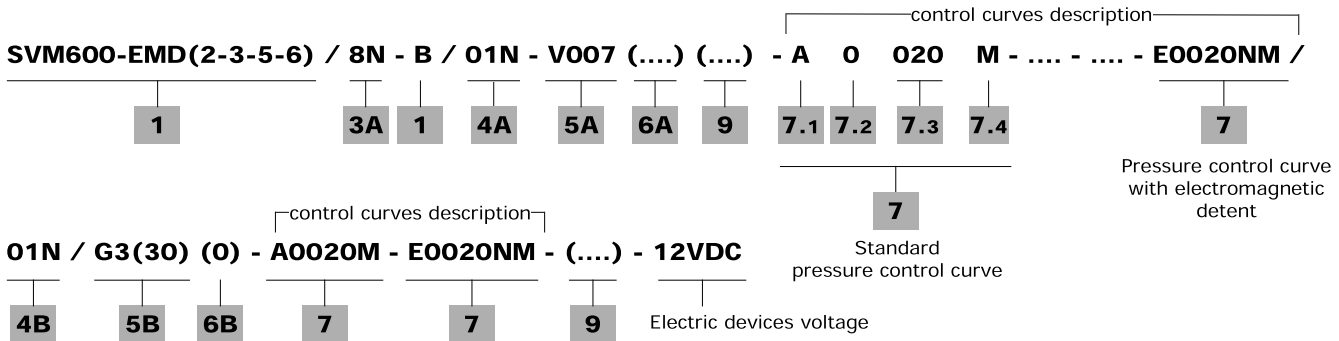
Dimensions and circuit hydraulic

Hydraulic circuit

Example detent on working ports 3, 4 and 6



Ordering codes



Main options

1 Body kit *

TYPE: SVM600-EMD(2-3)/B	CODE: 3C03600300
DESCRIPTION: With detent arrangement on ports 2 and 3	
TYPE: SVM600-EMD(3-5)/B	CODE: 3C03600305
DESCRIPTION: With detent arrangement on ports 3 and 5	
TYPE: SVM600-EMD(1-2-3)/B	CODE: 3C03600301
DESCRIPTION: With detent arrangement on ports 1, 2 and 3	
TYPE: SVM600-EMD(2-3-6)/B	CODE: 3C03600302
DESCRIPTION: With detent arrangement on ports 2, 3 and 6	
TYPE: SVM600-EMD(3-5-6)/B	CODE: 3C03600307
DESCRIPTION: With detent arrangement on ports 3, 5 and 6	
TYPE: SVM600-EMD(2-3-5-6)/B	CODE: 3C03600304
DESCRIPTION: With detent arrangement on ports 2, 3, 5 and 6	
TYPE: SVM600-EMD(1-2-3-5)/B	CODE: 3C03600306
DESCRIPTION: With detent arrangement on ports 1, 2, 3 and 5	

2 Flange kit

TYPE	CODE	DESCRIPTION
1	5FLA411154	Assembling flange

7 Pressure control curves

PFor list available see from page 51

7.1 Curve type

TYPE	DESCRIPTION
A	Without pre-feeling, without solenoid
B	With pre-feeling, without solenoid
C	With solenoid 24VDC and pre-feeling
D	With solenoid 24VDC, without pre-feeling
E	With solenoid 12VDC, with pre-feeling
F	With solenoid 12VDC, without pre-feeling
G	With solenoid 24VDC and pre-feeling after step

7.2 Typology of curves

TYPE	DESCRIPTION
0	With step
1	Without step

7.3 Curve identification

Progressive number, see tables from page 51

7.4 Return springs

TYPE	DESCRIPTION
M	Operation range from 18 to 25.5 N - <i>from 4.04 to 5.73 lbf</i>
A	Operation range from 23 to 35.2 N - <i>from 5.17 to 7.91 lbf</i>
B	Operation range from 23 to 68.1 N - <i>from 5.17 to 15.31 lbf</i>
C	Operation range from 89 to 176 N - <i>from 20 to 39.56 lbf</i>
D	Operation range from 110 to 220 N - <i>from 24.73 to 49.46 lbf</i>
E	Operation range from 138 to 276 N - <i>from 31 to 62.04 lbf</i>

9 Connector

Configurations with detent or microswitch are provided with wires with tin-plate terminals. For connectors please contact our Sales Department.

NNOTE (*) – Codes are referred to **BSP** thread.

Joystick options

3A Rubber bellow

TYPE	CODE	DESCRIPTION
8N	3SOF115115	Universal type, square base with logo
3	3SOF111111	Sloping type, square base with logo; only for 19° sloping handles

4A Detent configuration**With spring return in neutral position**

TYPE	CODE	DESCRIPTION
01N(2D)	5CIN8012ND	Kinematic kit arranged for 2 detents
01N(3D)	5CIN8013ND	Kinematic kit arranged for 3 detents

NOTE: The text between () is omitted from description of composition

5A Handles

Some handles as examples are listed below: for technical specifications and full range of handles and other types of joint see the "Handles and handlevers" catalogue.

V series handle

TYPE: V007	CODE: 5IMP030070
DESCRIPTION: Without switches with sloping 19° left joint	

S series handle

TYPE: SZTA8-0G4045-XG122045
CODE: 2IM5310003
DESCRIPTION: 1 proportional roller and front push button, with sloping 19° right joint

6A Handle position

TYPE	DESCRIPTION
(-)	Standard config., operation to work port 4: omitted in description
(90)	Mounted with 90° rotation step: operation to work port 1
(180)	Mounted with 180° rotation step: operation to work port 2
(270)	Mounted with 270° rotation step: operation to work port 3

Single acting options

4B Control option

Complete with rubber bellow (code 3SOF190783-C) and fixing wrapper

TYPE	CODE	DESCRIPTION
01N(0D)	5CIN1010D	Spring return to neutral position, without detent arrangement
01N(1D)	5CIN1011D	Spring return to neutral position, single detent arrangement; right or left position is defined by pressure control curve position
01N(2D)	5CIN1012D	Spring return to neutral position, double detent arrangement

NOTE: The text between () is omitted from description of composition

5B Standard handlever

TYPE	CODE	DESCRIPTION
G3(30)	5AST371228G	Ogival with portlight, 30° bending rod For features see page 42

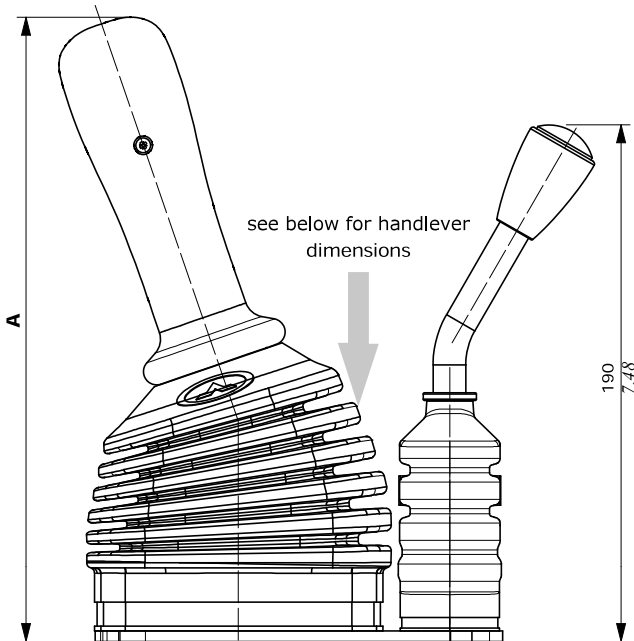
6B Handle position

TYPE	DESCRIPTION
(0)	Handlever oriented on P and T plugged ports
(90)	Handlever oriented on port 5
(270)	Handlever oriented on port 6

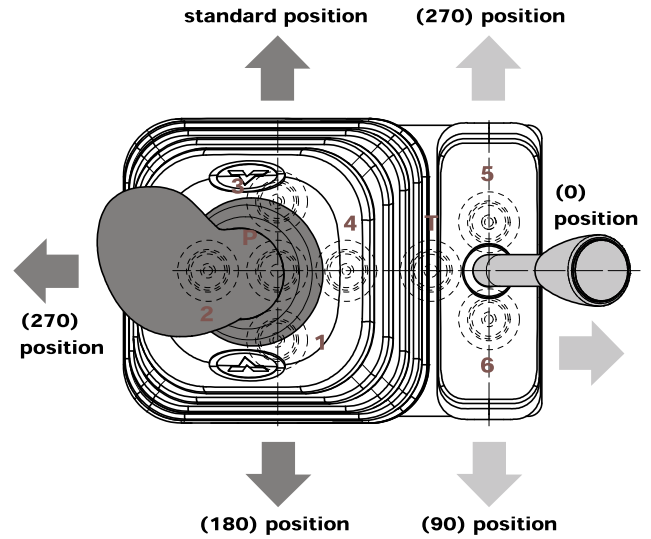
For different positions, please contact our Sales Department.

Configuration option

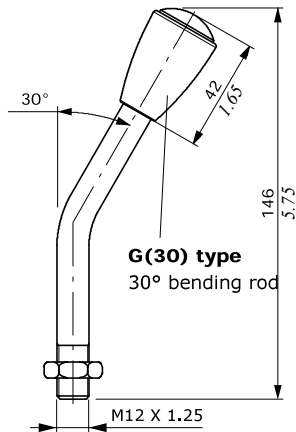
Handle and handlever option



Handle and handlever positions



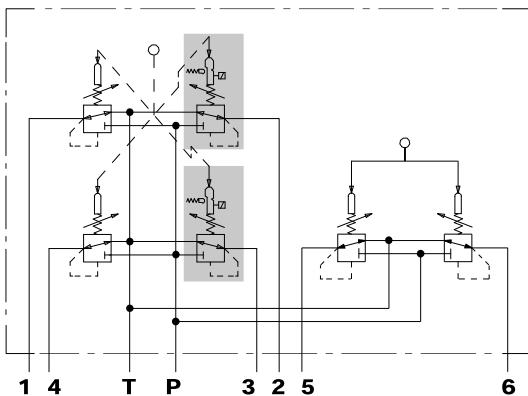
handlever type	A	
	mm	in
V series	232	9.13
H series	250	9.84
P series	268	10.55
S series	266	10.47



Detent configuration: examples

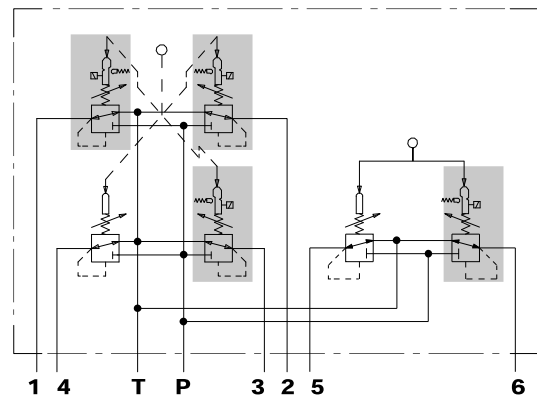
01/2D type (joystick)

Detent on ports 2 and 3, with spring return

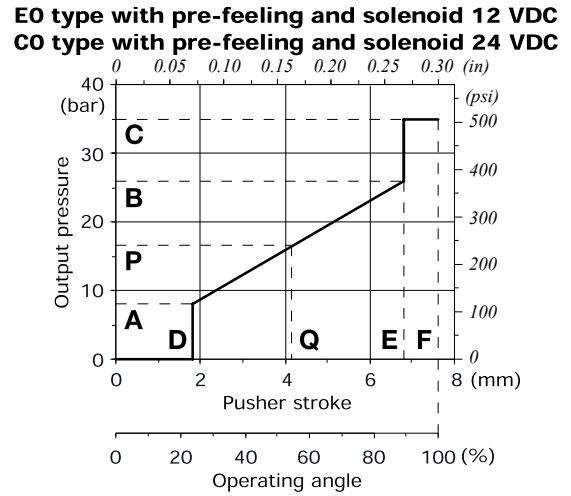
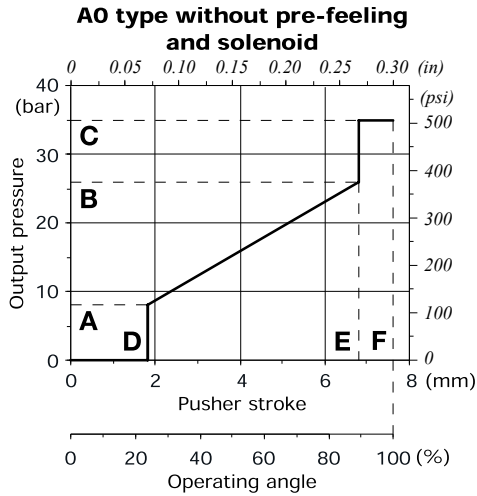


01/3D type (joystick) + 01/1D (single acting)

Detent on ports 1, 2, 3 and 6, with spring return



Control curves with step



Curve description		Pressure								Stroke								CODE ⁽¹⁾
Type	Nr	A		P		B		C		D		Q		E		F		
		bar (±toll)	psi (±toll)	bar (±toll)	psi (±toll)	bar (±toll)	psi (±toll)	bar	psi	mm	(in)	mm	(in)	mm	(in)	mm	(in)	
AO	011	3.5 (±1)	50.7 (±14.5)			25 (±1.5)	362.5 (±21.7)	35	507.5	0.85	0.03			7.25	0.28	7.6	0.30	
AO	099	3.6 (±1)	52.2 (±14.5)			15.8 (±1)	229.1 (±14.5)	35	507.5	0.85	0.03			7.25	0.28	7.6	0.30	
AO	B47	3.8 (±1)	55.1 (±14.5)			16.7 (±1)	242.15 (±14.5)	35	507.5	0.85	0.03			7.25	0.28	7.6	0.30	
AO	086	4 (±1)	58 (±14.5)			16.5 (±1)	239.2 (±14.5)	35	507.5	0.85	0.03			7.25	0.28	7.6	0.30	
AO	020	4.3 (±0.5)	62.3 (±7.25)			15.2 (±1.5)	220.4 (±21.7)	35	507.5	0.85	0.03			7.25	0.28	7.6	0.30	
AO	028	5 (±1)	72.5 (±14.5)			21 (±1.5)	304.5 (±21.7)	35	507.5	0.85	0.03			7.25	0.28	7.6	0.30	
AO	075	5 (±0.5)	72.5 (±7.25)			15 (±1.5)	22.5 (±21.7)	35	507.5	0.85	0.03			7.25	0.28	7.6	0.30	
AO	077	5 (±1)	72.5 (±14.5)			27 (±2)	391.5 (±29)	35	507.5	0.85	0.03			7.25	0.28	7.6	0.30	
AO	119	5 (±1)	72.5 (±14.5)			23.5 (±2)	340.7 (±29)	35	507.5	0.85	0.03			7.25	0.28	7.6	0.30	
AO	001	5.8 (±0.5)	84.1 (±7.25)			22 (±1.5)	319 (±21.7)	30	435	0.85	0.03			7.25	0.28	7.6	0.30	
AO	033	5.8 (±0.5)	84.1 (±7.25)			19.1 (±1)	276.9 (±14.5)	35	507.5	0.85	0.03			7.25	0.28	7.6	0.30	
AO	085	6 (±1)	87 (±14.5)			25 (±1.5)	362.5 (±21.7)	35	507.5	0.85	0.03			7.25	0.28	7.6	0.30	
AO	088	8 (±0.5)	116 (±7.25)			27 (±1.5)	391.5 (±21.7)	35	507.5	0.85	0.03			7.25	0.28	7.6	0.30	
AO	036	12 (±0.5)	174 (±7.25)			25 (±1)	362.5 (±14.5)	35	507.5	0.85	0.03			7.25	0.28	7.6	0.30	

With Pre-feeling for electromagnetic detent

CO	B09	3.5 (±0.5)	50.7 (±7.25)	13.7 (±1)	198.6 (±14.5)	15.1 (±1)	218.9 (±14.5)	35	507.5	0.85	0.03	6.5	0.25	7.25	0.28	7.6	0.30	5CR7C0B09NM
EO	B09	3.5 (±0.5)	50.7 (±7.25)	13.7 (±1)	198.6 (±14.5)	15.1 (±1)	218.9 (±14.5)	35	507.5	0.85	0.03	6.5	0.25	7.25	0.28	7.6	0.30	5CR7E0B09NM
CO	011	3.5 (±1)	50.7 (±14.5)	25 (±1.5)	362.5 (±21.7)	27.9 (±1.5)	41.8 (±21.7)	35	507.5	0.85	0.03	6.5	0.25	7.25	0.28	7.6	0.30	5CR7C0011NM
CO	B47	3.8 (±1)	55.1 (±14.5)	15.3 (±0.5)	221.8 (±7.25)	16.8 (±1)	243.6 (±14.5)	35	507.5	0.85	0.03	6.5	0.25	7.25	0.28	7.6	0.30	5CR7C0347NM
EO	086	4 (±1)	58 (±14.5)	16.5 (±0.5)	239.2 (±7.25)	18.2 (±1)	263.9 (±14.5)	35	507.5	0.85	0.03	6.5	0.25	7.25	0.28	7.6	0.30	5CR7E0086NM
CO	118	4 (±0.5)	58 (±7.25)	13 (±1)	188.5 (±14.5)	16.1 (±1)	233.4 (±14.5)	35	507.5	0.85	0.03	6.5	0.25	7.25	0.28	7.6	0.30	5CR7C0118NM
CO	020	4.3 (±1)	62.3 (±14.5)	15.2 (±1)	220.4 (±14.5)	16.6 (±1)	240.7 (±14.5)	35	507.5	0.85	0.03	6.5	0.25	7.25	0.28	7.6	0.30	5CR7C0020NM
CO	028	5 (±1)	72.5 (±14.5)	20 (±1.5)	290 (±21.7)	22 (±2)	319 (±29)	35	507.5	0.85	0.03	6.5	0.25	7.25	0.28	7.6	0.30	5CR7C0028NM
CO	075	5 (±0.5)	72.5 (±7.25)	15 (±1)	217.5 (±14.5)	16.3 (±1.5)	236.3 (±21.7)	35	507.5	0.85	0.03	6.5	0.25	7.25	0.28	7.6	0.30	5CR7C0075NA 5CR7C0075NB
EO	075	5 (±0.5)	72.5 (±7.25)	15 (±1)	217.5 (±14.5)	16.3 (±1.5)	236.3 (±21.7)	35	507.5	0.85	0.03	6.5	0.25	7.25	0.28	7.6	0.30	5CR7E0075NB
CO	001	5.8 (±1)	84.1 (±14.5)	22 (±1.5)	319 (±21.7)	24.2 (±2)	350.9 (±29)	35	507.5	0.85	0.03	6.5	0.25	7.25	0.28	7.6	0.30	5CR7C0001NM
EO	033	5.8 (±0.5)	84.1 (±7.25)	19 (±1)	275.5 (±14.5)	20.8 (±1)	301.6 (±14.5)	35	507.5	0.85	0.03	6.5	0.25	7.25	0.28	7.6	0.30	5CR7E0033NB 5CR7E0033NM
CO	070	5.8 (±1)	84.1 (±14.5)	22.4 (±1.5)	324.8 (±21.7)	24.6 (±1.5)	356.7 (±21.7)	35	507.5	0.85	0.03	6.5	0.25	7.25	0.28	7.6	0.30	5CR7C0070NM
EO	085	6 (±1)	87 (±14.5)	25 (±2)	362.5 (±29)	27.5 (±2)	398.75 (±29)	35	507.5	0.85	0.03	6.5	0.25	7.25	0.28	7.6	0.30	5CR7E0085NM
CO	088	8 (±0.5)	116 (±7.25)	27 (±1)	391.5 (±14.5)	29.5 (±1)	427.75 (±14.5)	35	507.5	0.85	0.03	6.5	0.25	7.25	0.28	7.6	0.30	5CR7C0088NM
CO	036	12 (±1)	174 (±14.5)	25 (±1.5)	362.5 (±21.7)	26.7 (±1.5)	387.15 (±21.7)	35	507.5	0.85	0.03	6.5	0.25	7.25	0.28	7.6	0.30	5CR7C0036NA

⁽¹⁾ indicates the curve with the specific return spring
For different curves, please contact our Sales Department