

NEW

SVM980

Hydraulic joystick
with differential area

 **walvoil**
FLUID POWER E|MOTION



 **walvoil**
FLUID POWER E|MOTION

A member of



SVM980

Hydraulic joystick
with differential area



SVM980 is Walvoil's new hydraulic joystick with differential area. In this way Walvoil expands the hydraulic pilot control valves range by introducing a unique product for at least two main features:

- the lowest operating forces for the operator among the entire range of hydraulic pilot control valves;
- the possibility to manage and regulate high flow rates, thanks to the large diameters of the spools a useful and necessary condition especially on large machines.

Thanks to a new patented design solution as well, Walvoil changes the traditional construction architecture used for other products of the same type, offering an innovative, original, solid and reliable product, completely adaptable to customer needs by the modularity of the fixing flanges and the endless possibilities of completion thanks to the compatibility with all the handles of the Walvoil catalogue.

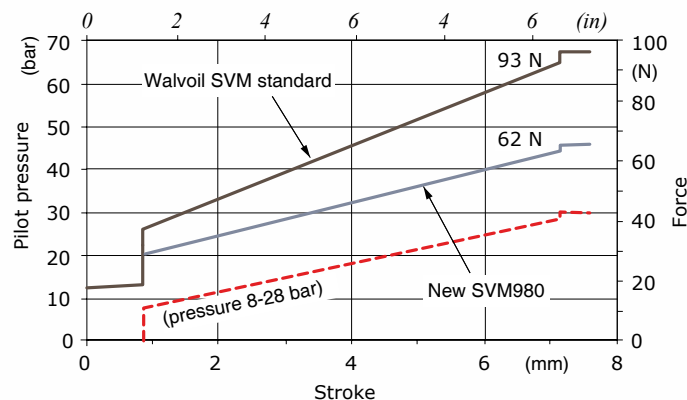
- Low drive force
- Ability to handle increased flow rate
- Cast iron body for high strength and reliability
- Compatible with all the Walvoil handles

Working conditions

Min. pressure	30 bar - 435 psi
Max. pressure	100 bar - 1450 psi
Max. back pressure	4 bar - 58 psi
Max. rated flow	20 l/min - 5.28 Us gpm
Hydraulic fluid	mineral oil
Kinematic viscosity	3 - 400 mm ² /s - 3 - 400 cSt
Operating temperature	-20/+90°C - -4/+194°F
Contamination	18/15 (ISO/DIS 4406)
Hysteresis max.	0.5 bar - 7.25 psi
Internal leakage with all spool in neutral P → T, 30 bar, 38 cSt	max. 50 cm ³ /min - 3.05 in ³ /min
Internal leakage when one spool in supplying pressure to work port P → T, 30 bar, 38 cSt	max. 75 cm ³ /min - 4.57 in ³ /min

Performance data

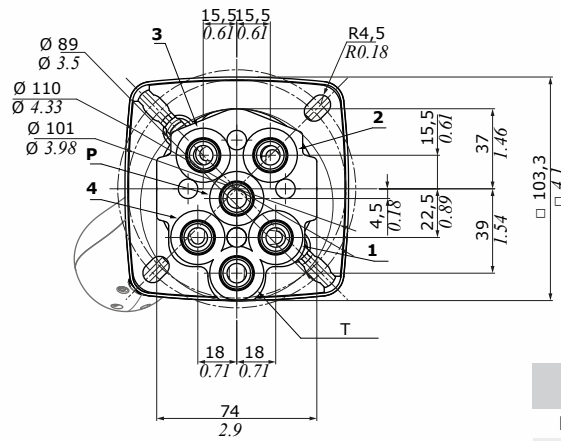
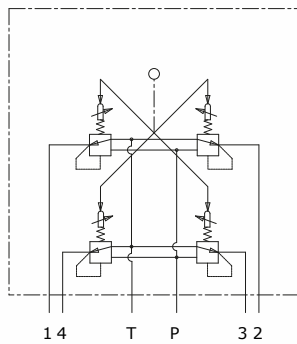
Comparison between SVM980 and SVM std.



NEW

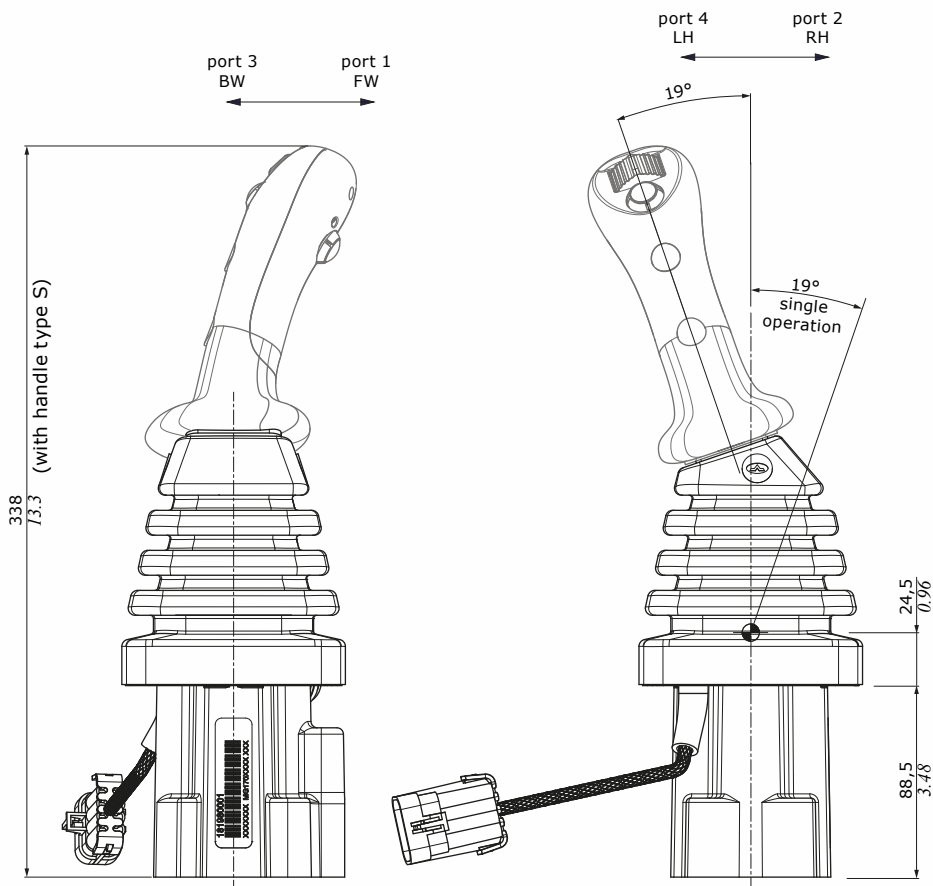
Dimensions

HYDRAULIC CIRCUIT



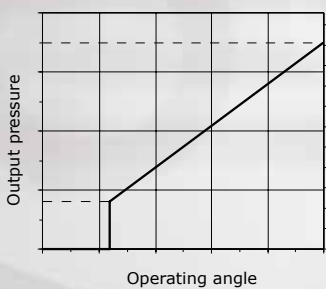
Ports thread

BSP	UN-UNF
3/8	9/16-18 UNI SAE6
1/4	-

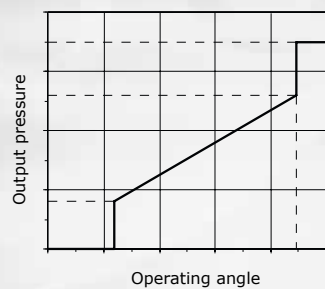


Available control curve types

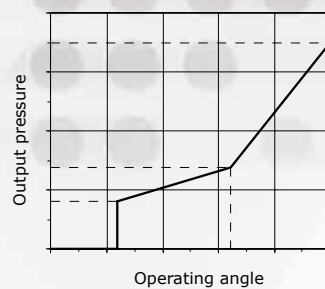
Straight type



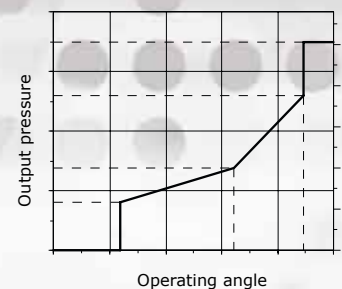
Straight type with step



Piecewise



Piecewise with step



Features

Original and Patented Design

Walvoil changes the traditional construction architecture of differential area hydraulic pilot valve offering an innovative, original and patented product.

High Durability

The cast iron body and the treated spool ensure high durability, greater resistance to oil contamination and maintain unchanged characteristics (such as leakage) during the joysticks, life cycle.

High Flow, low Pressure drop

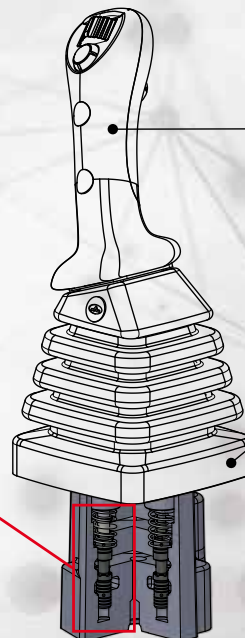
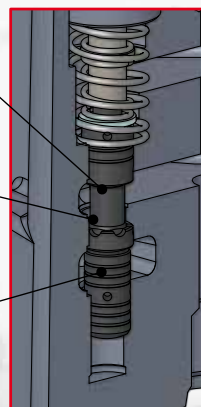
Possibility to manage and regulate high flow rates, ensuring low pressure drop, thanks to the large diameters of the spools.

Handles

Endless possibilities to complete and customize the Joystick thanks to the compatibility with all the handles of the Walvoil catalogue.

Flange

Thanks to the modularity of the fixing flanges, the SVM980 is completely adaptable to the customer's needs.



D1WWCF02E - 1th edition March 2019

