



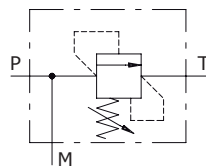
## Type VMPD/B pressure relief valves

- Differential pressure relief valve
- Poppet type

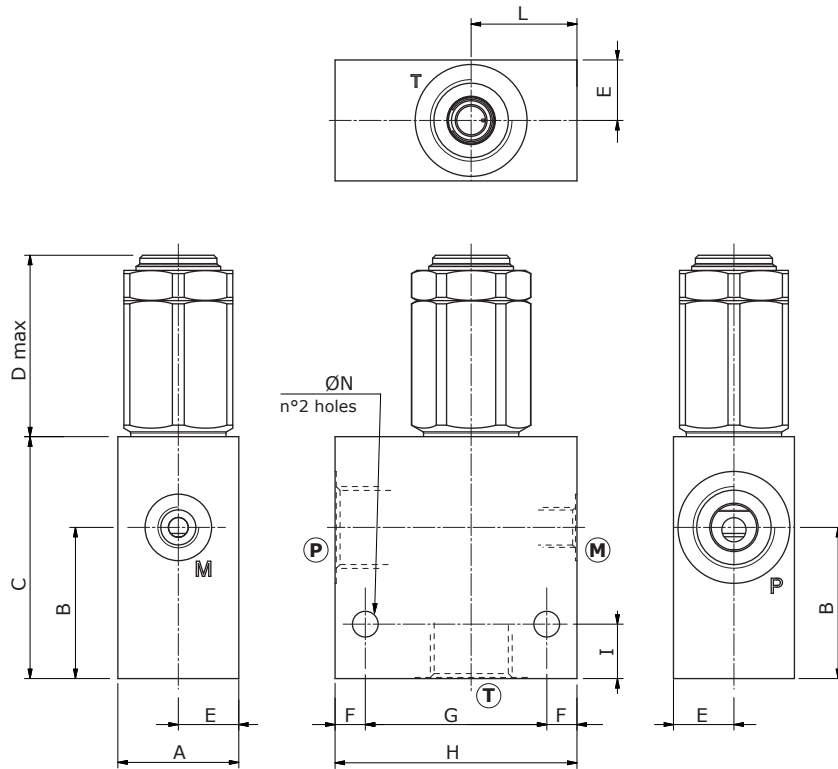
Technical specifications and diagrams are measured with mineral oil of 46 cSt viscosity at 40°C (104°F) temperature.

	VMPD/B 38	VMPD/B 12	VMPD/B 34	VMPD/B 100	
Nominal flow	35 l/min (9.2 US gpm)	60 l/min (16 US gpm)	100 l/min (26.4 US gpm)	180 l/min (47.6 US gpm)	
Max. pressure	Aluminium body = 210 bar (3050 psi) Steel body = 350 bar (5100 psi)				
Oil leakage at 80% of max. setting	0.25 cm <sup>3</sup> /min (0.01 in <sup>3</sup> /min)				
Fluid	mineral based oil				
Viscosity	from 10 to 200 cSt				
Max. level of contamination	18/16/13 ISO4406				
Fluid temperature	with NBR seals from -20°C (-4°F) to 80°C (176°F)				
Environmental temp. for working conditions	from -40°C (-40°F) to 100°C (212°F)				
Weight	alum.	0.50 kg (1.10 lb)	0.68 kg (1.50 lb)	1.12 kg (2.47 lb)	1.42 kg (3.13 lb)
	steel	0.92 kg (2.03 lb)	1.28 kg (2.82 lb)	2.04 kg (4.50 lb)	2.72 kg (6.65 lb)

NOTE - For different conditions, please contact Walvoil Sales Dpt.



## Dimensions

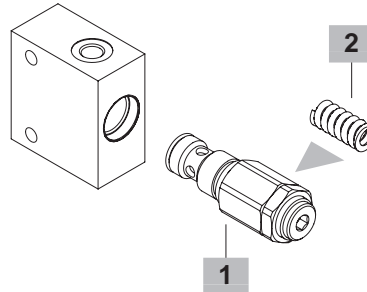
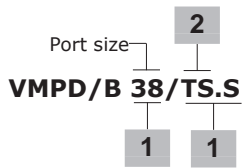


Valve type	T	P	M
VMPD/B 38	G3/8	G3/8	G1/4
VMPD/B 12	G1/2	G1/2	G1/4
VMPD/B 34	G3/4	G3/4	G1/4
VMPD/B 100	G1"	G1"	G1/4

Dimensions are in mm-in

Valve type	A	B	C	D max	E	F	G	H	I	L	ØN
VMPD/B 38	30-1.18	38-1.50	60-2.36	57.7-2.27	15-0.59	10-0.39	40-1.57	60-2.36	15-0.59	30-1.18	6.5-0.25
VMPD/B 12	35-1.38	43-1.69	65-2.55	56.2-2.21	17.5-0.69	10-0.39	50-1.97	70-2.75	15-0.59	33-1.30	8.5-0.33
VMPD/B 34	40-1.57	50-1.97	80-3.15	68.8-2.71	20-0.79	10-0.39	60-2.36	80-3.15	18-0.71	35-1.38	8.5-0.33
VMPD/B 100	50-1.97	59-2.32	90-3.54	68.8-2.71	25-0.98	10-0.39	70-2.75	90-3.54	20-0.79	42-1.65	10.5-0.41

**Ordering codes and description composition**



**VMPD/B complete valves**

TYPE	CODE	DESCRIPTION
<b>Configuration with G3/8 standard thread</b>		
<b>VMPD/B 38/TS.S</b>	1121021102	Aluminium body, setting range 5-210 bar (72.5-3045 psi), std. setting 150 bar @ 5 l/min (2175 psi at 1.32 US gpm)
<b>VMPD/B 38/TS.S/ac</b>	1121022102	Steel body, as previous one
<b>Configuration with G1/2 standard thread</b>		
<b>VMPD/B 12/TS.S</b>	1121031102	Aluminium body, setting range 5-210 bar (72.5-3045 psi), std. setting 150 bar @ 5 l/min (2175 psi at 1.32 US gpm)
<b>VMPD/B 12/TS.S/ac</b>	1121032100	Steel body, as previous one)
<b>Configuration with G3/4 standard thread</b>		
<b>VMPD/B 34/TS.S</b>	1121041102	Aluminium body, setting range 5-210 bar (72.5-3045 psi), std. setting 150 bar @ 5 l/min (2175 psi at 1.32 US gpm)
<b>VMPD/B 34/TS.S/ac</b>	1121042100	Steel body, as previous one
<b>Configuration with G1" standard thread</b>		
<b>VMPD/B 100/TS.S</b>	1121051102	Aluminium body, setting range 5-210 bar (72.5-3045 psi), std. setting 150 bar @ 5 l/min (2175 psi at 1.32 US gpm)
<b>VMPD/B 100/TR.S/ac</b>	1121052100	Steel body, setting range 50-350 bar (725-5100 psi), std. setting 250 bar @ 5 l/min (3600 psi at 1.32 US gpm)

For other steel body configurations, SAE thread and configurations with FPM (Viton) seals please contact our Sales Dpt.

**1 Direct acting pressure relief valves**

*Standard setting 150 bar at 5 l/min (2175 psi at 1.32 US gpm)*

TYPE	CODE	DESCRIPTION
<b>For G3/8 ports configuration</b>		
<b>VMPD 38/TS.S</b>	1120020402	Setting range 5-210 bar (72.5-3050 psi)
<b>For G1/2 ports configuration</b>		
<b>VMPD 12/TS.S</b>	1120030402	Setting range 5-210 bar (72.5-3050 psi)
<b>For G3/4 and G1" ports configuration</b>		
<b>VMPD 34/TS.S</b>	1120040402	Setting range 5-210 bar (72.5-3050 psi)

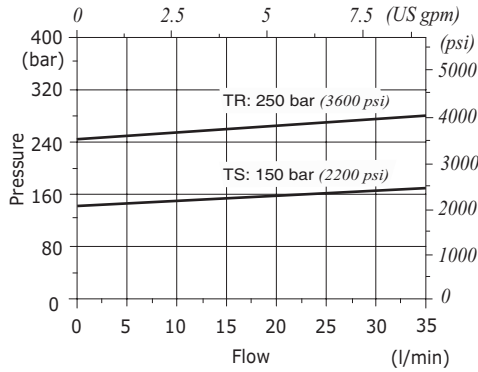
**2 Pressure setting spring**

TYPE	CODE	DESCRIPTION
<b>For VMPD/B38 valve</b>		
<b>TS</b>	3ML1144000	Setting range 5-210 bar (72.5-3050 psi)
<b>TR</b>	3ML1144001	Setting range 50-350 bar (725-5100 psi)
<b>For VMPD/B12 valve</b>		
<b>TS</b>	3ML1164000	Setting range 5-210 bar (72.5-3050 psi)
<b>TR</b>	3ML1164001	Setting range 50-350 bar (725-5100 psi)
<b>For VMPD/B34 and VMPD/B100 valves</b>		
<b>TS</b>	3ML1194500	Setting range 5-210 bar (72.5-3050 psi)
<b>TR</b>	3ML1194501	Setting range 50-350 bar (725-5100 psi)

## Rating diagrams

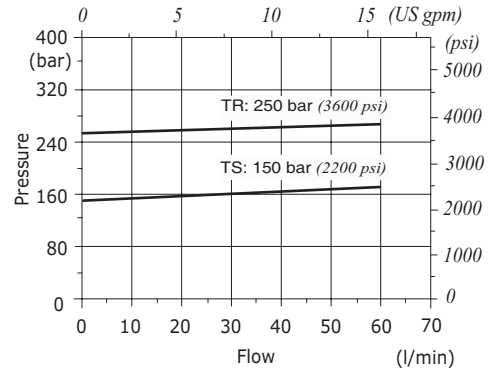
**VMPD/B 38 pressure vs. flow**

Std. setting @ 5 l/min (1.32 US gpm)



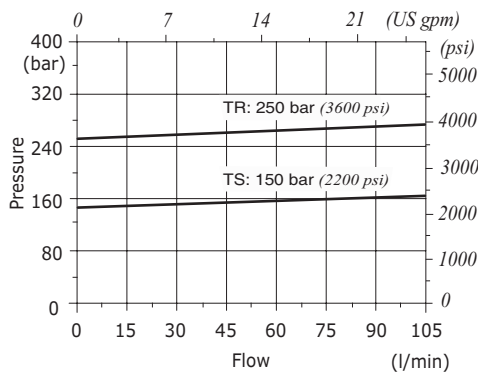
**VMPD/B 12 pressure vs. flow**

Std. setting @ 5 l/min (1.32 US gpm)



**VMPD/B 34 pressure vs. flow**

Std. setting @ 5 l/min (1.32 US gpm)



**VMPD/B 100 pressure vs. flow**

Std. setting @ 5 l/min (1.32 US gpm)

