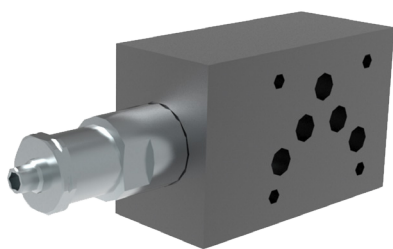


VPN2-10/M(R)

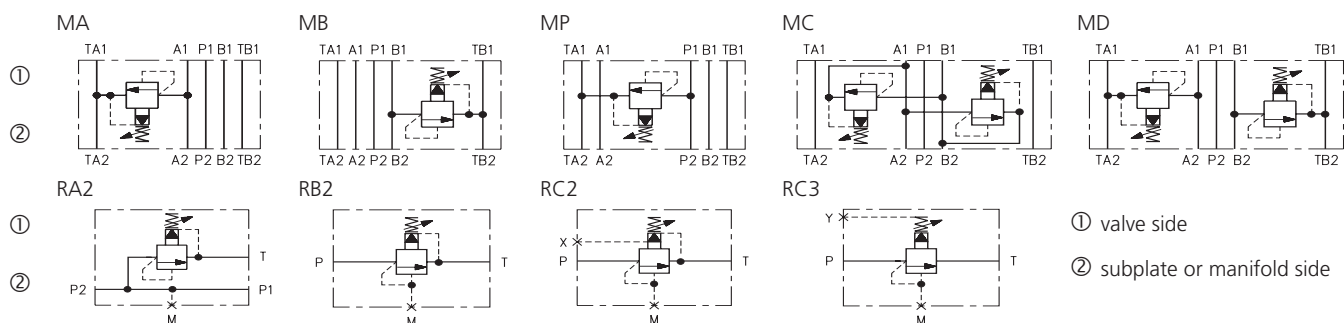
Size 10 (D05) • Q_{max} 150 l/min (40 GPM) • p_{max} 350 bar (5100 PSI)



Technical Features

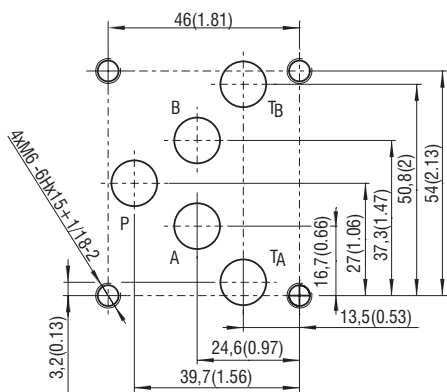
- › Pressure relief valve, spool type, pilot operated, with mounting interface acc. to ISO 4401, DIN 24340 (CETOP 05) or in-line design
- › Low hysteresis, accurate pressure control and low pressure drop
- › Wide pressure range up to 350 bar
- › High flow capacity
- › Hardened precision parts
- › Ideal for use as control valve where accuracy and repeatability is required
- › Adjustable by allen key or hand screw, optionally sealable (lockwire holes)
- › In the standard version, the valve housing is phosphated and steel parts are zinc-coated for 240 h protection acc. to ISO 9227

Functional Symbols



Notice: The orientation of the symbol on the name plate corresponds with the valve function.

ISO 4401-05-04-0-05



Ports P, A, B, T - max. \varnothing 11.2 mm (0.44 in)

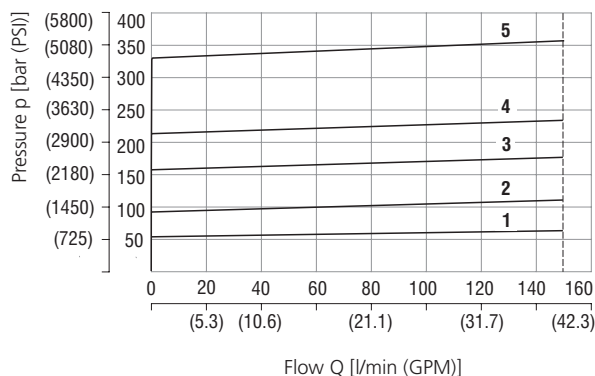
Technical Data

Valve size	10 (D05)	
Max. flow	l/min (GPM)	150 (40)
Max. operating pressure	bar (PSI)	350 (5080)
Fluid temperature range (NBR)	$^{\circ}$ C ($^{\circ}$ F)	-30 ... +100 (-22 ... 212)
Fluid temperature range (FPM)	$^{\circ}$ C ($^{\circ}$ F)	-20 ... +120 (-4 ... 248)
Mass		
- models MA (B, P) 10		2.15 (4.74)
- models MC (D) 10	kg (lbs)	3.0 (6.61)
- models RA2, RB2, RC2 (3)		2.7 (5.95)

	Datasheet	Type
General information	GI_0060	Products and operating conditions
Mounting interface	SMT_0019	Size 10
Spare parts	SP_8010	

Characteristics measured at $v = 32 \text{ mm}^2/\text{s}$ (156 SUS)

Relief pressure related to flow rate



Minimum set and circulation pressure

