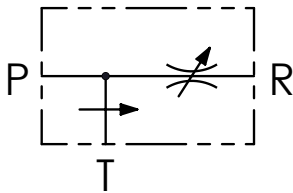




Schema idraulico - Hydraulic circuit



Dati tecnici - Technical data

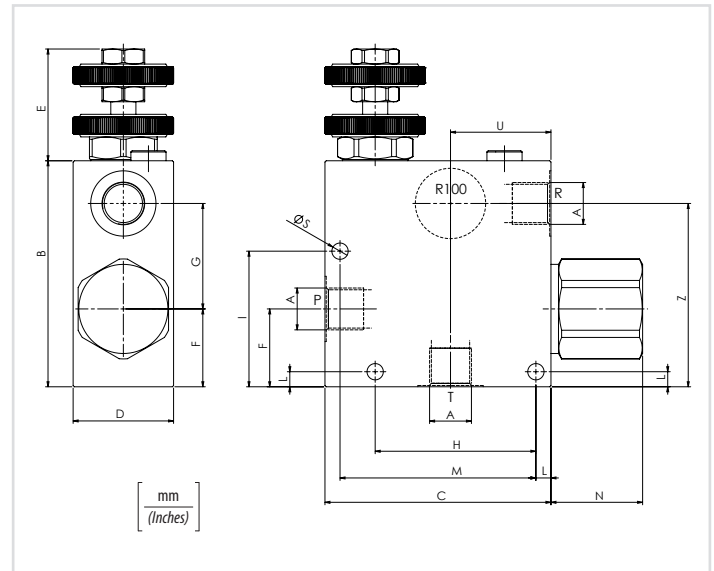
Olio idraulico/Mineral oil	ISO 6743/4 (DIN 51524)	
Viscosità olio/Oil viscosity	15-250 mm ² /s (15 to 250 cSt)	
Classe di contaminazione max con filtro Max contamination index with filter	ISO 4406:1999 Classe 19/17/14	
Temperatura dell'olio/Oil temperature	-20°C +80°C	-4°F + 176°F
Temperatura ambiente/Ambient temperature	-20°C +50°C	-4°F + 122°F
È indispensabile l'utilizzo di un filtro per proteggere la valvola (filtrazione consigliata 15 µm) It is necessary a filter use to protect the valve (advised filtration 15 µm)		

	01	02	03
Codice ordinazione Ordering code	VPT		V

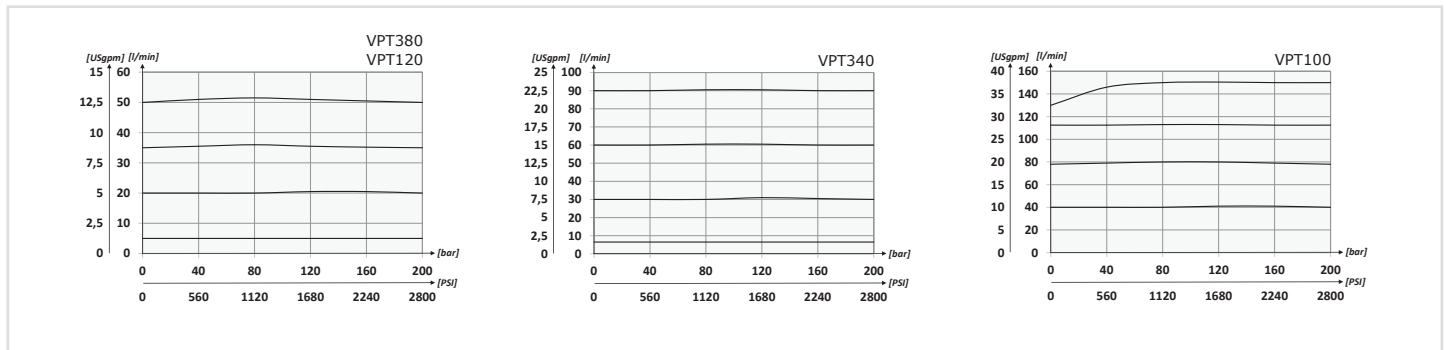
01	Regolatori di flusso 3 vie - compensati, con eccedenza in scarico (3 ways flow control valves - pressure compensated, exceeding flow to tank)	VPT	
02	Dimensione (Size)	BSPP 3/8	380
		BSPP 1/2	120
		BSPP 3/4	340
		BSPP 1	100
03	Regolazione (Setting)	Volantino (Hand wheel)	V

Portata massima l/min - Max flow USgpm

50 l/min con 30 l/min in R (13,3 USgpm with 8 USgpm in R)	380
80 l/min con 50 l/min in R (21,3 USgpm with 13,3 USgpm in R)	120
150 l/min con 80 l/min in R (40 USgpm with 21,3 USgpm in R)	340
240 l/min con 150 l/min in R (64 USgpm with 40 USgpm in R)	100



Performances



Caratteristiche tecniche - Technical characteristics

Tipo Type	A	Portata max (l/min) Max flow (USgpm)	Pressione max (bar) Max pressure (PSI)	B	C	D	E	F	G	H	I	L	M	N	S	U	Z	Peso approssimativo (kg) Approx weight (lb)
VPT380	BSPP 3/8	50 (13.2)	250 (3625)	90 (3.54)	90 (3.54)	40 (1.57)	47,5 (1.87)	31 (1.22)	42 (1.65)	64 (2.52)	54 (2.13)	6 (0.24)	78 (3.07)	36,5 (1.44)	6,5 (0.26)	40 (1.57)	/	1,15 (2.54)
VPT120	BSPP 1/2	90 (23.8)		110 (4.33)	110 (4.33)	50 (1.97)	49,5 (1.95)	35 (1.38)	50 (1.97)	88 (3.46)	63,5 (2.50)	8,5 (0.33)	100 (3.70)	34,7 (1.37)	8,5 (0.33)	44 (1.73)	/	1,94 (4.28)
VPT340	BSPP 3/4	150 (39.6)		110 (4.33)	110 (4.33)	50 (1.97)	52,5 (2.07)	47 (1.85)	/	/	/	10 (0.39)	/	36,5 (1.44)	44 (1.73)	87 (3.45)	/	2,05 (4.52)
VPT100	BSPP 1	240 (63.4)		110 (4.33)	110 (4.33)	50 (1.97)	52,5 (2.07)	47 (1.85)	/	/	/	10 (0.39)	/	36,5 (1.44)	44 (1.73)	87 (3.45)	/	2,05 (4.52)