

Type VUC/M check valves

- Poppet type

Technical specifications and diagrams are measured with mineral oil ISO VG32 at 50°C (122°F) temperature.

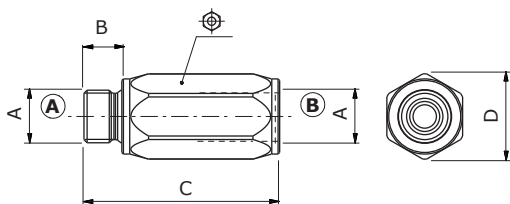
	VUC/M 14	VUC/M 38	VUC/M 12	VUC/M 34	VUC/M 100	VUC/M 114	
Nominal flow	30 l/min (7.9 US gpm)	50 l/min (13.2 US gpm)	90 l/min (23.8 US gpm)	130 l/min (34.3 US gpm)	180 l/min (47.6 US gpm)	250 l/min (66 US gpm)	
Max. pressure	400 bar (5800 psi)		350 bar (5100 psi)	300 bar (4350 psi)	270 bar (3900 psi)	250 bar (3600 psi)	
Oil leakage	0.25 cm ³ /min (0.015 in ³ /min) at 210 bar (3050 psi)						
Fluid	mineral based oil						
Viscosity	from 10 to 200 cSt						
Max. level of contamination	18/16/13 ISO4406						
Fluid temperature	with NBR seals: from -20°C (-4°F) to 80°C (176°F)						
Environmental temp. for working conditions	-40°C (-40°F) to 100°C (212°F)						
Weight	Steel	0.10 kg (0.22 lb)	0.18 kg (0.40 lb)	0.31 kg (0.68 lb)	0.56 kg (1.23 lb)	0.91 kg (2.01 lb)	1.48 kg (3.26 lb)

NOTE - For different conditions, please contact Walvoil Sales Dpt.



Dimensions

Dimensions are in mm-in

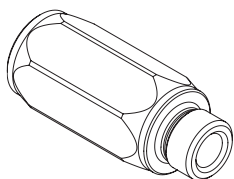


Valve type	A	B	C	D	⌀
VUC/M 14	G 1/4	12 - 0.47	58 - 2.28	21 - 0.83	19
VUC/M 38	G 3/8	12 - 0.47	62 - 2.44	27 - 1.05	24
VUC/M 12	G 1/2	14 - 0.55	71 - 2.79	33 - 1.30	30
VUC/M 34	G 3/4	16 - 0.63	76 - 2.99	40 - 1.57	36
VUC/M 100	1	18 - 0.71	106 - 4.17	59 - 2.32	45
VUC/M 114	G 1 1/4	20 - 0.78	127 - 5	63 - 2.48	55

Ordering codes and description composition

Port size — Opening pressure (bar)

VUC/M 14/Pa0,5



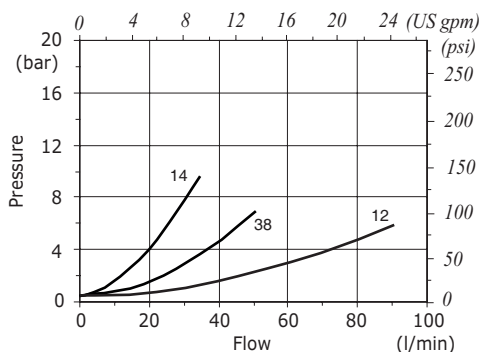
VUC/M complete valves

TYPE	CODE	DESCRIPTION
VUC/M14/Pa0,5	1312610100	Steel body, opening pressure 0.5 bar (7.25 psi), G1/4 thread
VUC/M38/Pa0,5	1312620100	Steel body, opening pressure 0.5 bar (7.25 psi), G3/8 thread
VUC/M12/Pa0,5	1312630100	Steel body, opening pressure 0.5 bar (7.25 psi), G1/2 thread
VUC/M34/Pa0,5	1312640100	Steel body, opening pressure 0.5 bar (7.25 psi), G3/4 thread
VUC/M100/Pa0,5	1312650100	Steel body, opening pressure 0.5 bar (7.25 psi), G1 thread
VUC/M114/Pa0,5	1312660100	Steel body, opening pressure 0.5 bar (7.25 psi), G1 1/4 thread

For different configurations and SAE thread please contact our Sales Dpt.

Rating diagrams

VUC/M14-38-12 pressure drop vs. flow
opening pressure 0.5 bar (7.25 psi)



VUC/M34-100-114 pressure drop vs. flow
opening pressure 0.5 bar (7.25 psi)

