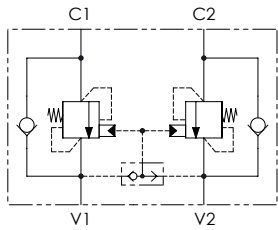


#### Schema idraulico - Hydraulic circuit



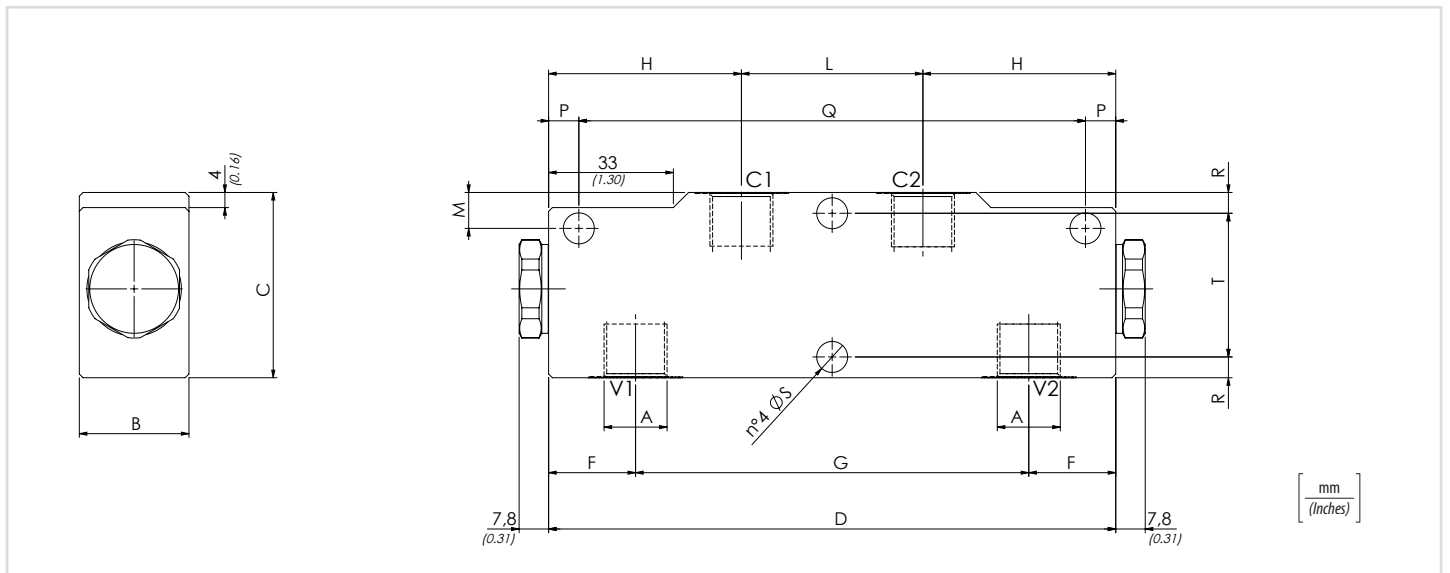
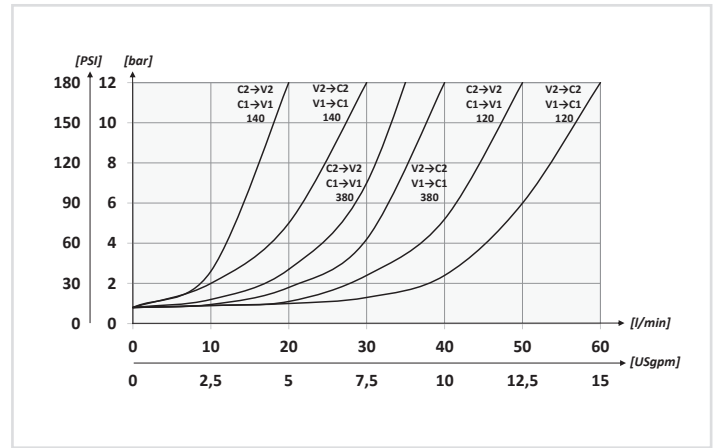
#### Dati tecnici - Technical data

<b>Olio idraulico/Mineral oil</b>	ISO 6743/4 (DIN 51524)	
<b>Viscosità olio/Oil viscosity</b>	15-250 mm <sup>2</sup> /s (15 to 250 cSt)	
<b>Classe di contaminazione max con filtro</b> Max contamination index with filter	ISO 4406:1999 Classe 19/17/14	
<b>Temperatura dell'olio/Oil temperature</b>	-20°C +80°C	-4°F + 176°F
<b>Temperatura ambiente/Ambient temperature</b>	-20°C +50°C	-4°F + 122°F
<b>È indispensabile l'utilizzo di un filtro per proteggere la valvola (filtrazione consigliata 15 µm)</b> It is necessary a filter use to protect the valve (advised filtration 15 µm)		

<b>Codice ordinazione</b> <b>Ordering code</b>	01	02	03	04
	<b>VBZD</b>		<b>2</b>	

<b>01</b>	Valvole di bilanciamento doppie per centro aperto a taratura fissa (Dual counterbalance valves fixed setting for open center)	<b>VBZD</b>	
<b>02</b>	Dimensione (Size)	BSPP 1/4	<b>140</b>
		BSPP 3/8	<b>380</b>
		BSPP 1/2	<b>120</b>
<b>03</b>	Taratura (Setting) <b>Q=5 l/min 350 bar (5075 PSI)</b>	<b>2</b>	
<b>04</b>	Materiale (Material)	Corpo in acciaio + zincatura (Steel body + zinc-plated)	<b>S</b>
		Corpo in acciaio + zinco-nichel (Steel body + zinc-nickel)	<b>K</b>
Rapporto di pilotaggio (Pilot ratio) 1:4.25			

#### Performances



#### Caratteristiche tecniche - Technical characteristics

Tipo Type	A	Portata max Max flow l/min-USgpm	Pressione max Max pressure bar/PSI	B	C	D	F	G	H	L	M	P	Q	R	S	T	Peso approssimativo Approx weight kg/lb							
<b>VBZD140</b>	<b>BSPP 1/4</b>	<b>30 (7.9)</b>	<b>350 (5075)</b>	<b>29 (1.14)</b>	<b>49 (1.93)</b>	<b>150 (5.91)</b>	<b>23 (0.91)</b>	<b>104 (4.09)</b>	<b>51 (2.01)</b>	<b>48 (1.89)</b>	<b>10 (0.39)</b>	<b>8 (0.31)</b>	<b>134 (5.28)</b>	<b>5,5 (0.22)</b>	<b>8,2 (0.32)</b>	<b>38 (1.50)</b>	<b>1,50 (3,30)</b>							
<b>VBZD380</b>	<b>BSPP 3/8</b>	<b>40 (10.6)</b>															<b>21 (0.83)</b>	<b>108 (4.25)</b>	<b>12 (0.47)</b>	<b>134 (5.28)</b>	<b>5,5 (0.22)</b>	<b>8,2 (0.32)</b>	<b>43 (1.69)</b>	<b>1,48 (3,25)</b>
<b>VBZD120</b>	<b>BSPP 1/2</b>	<b>60 (15.9)</b>															<b>59 (2.32)</b>	<b>108 (4.25)</b>	<b>12 (0.47)</b>	<b>134 (5.28)</b>	<b>5,5 (0.22)</b>	<b>8,2 (0.32)</b>	<b>43 (1.69)</b>	<b>1,71 (3.76)</b>