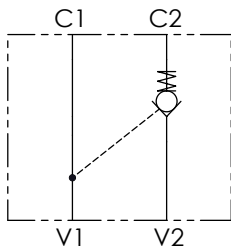


### Schema idraulico - Hydraulic circuit



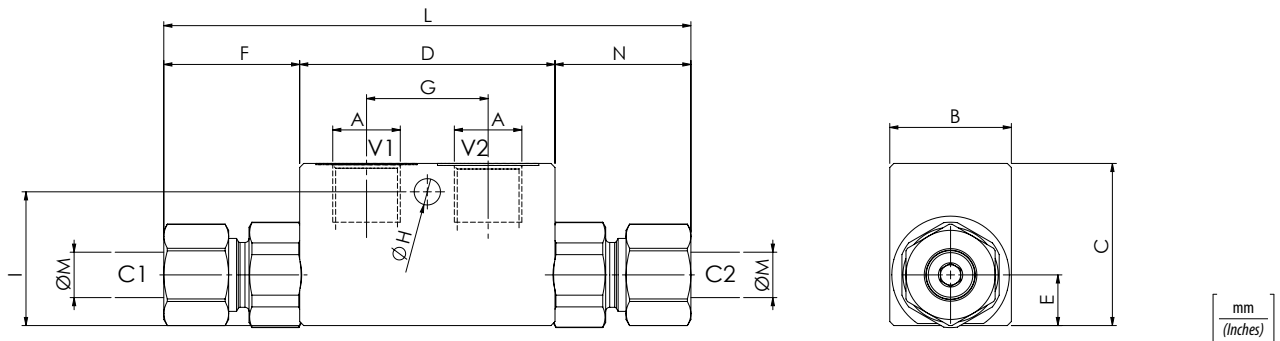
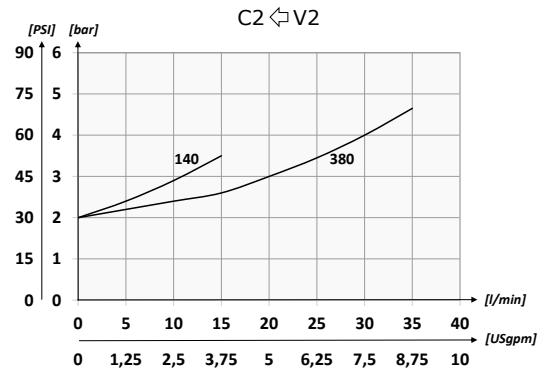
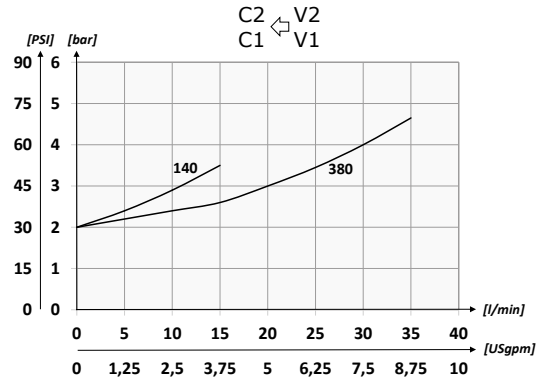
### Dati tecnici - Technical data

<b>Olio idraulico/Mineral oil</b>	ISO 6743/4 (DIN 51524)	
<b>Viscosità olio/Oil viscosity</b>	15-250 mm <sup>2</sup> /s (15 to 250 cSt)	
<b>Classe di contaminazione max con filtro</b> Max contamination index with filter	ISO 4406:1999 Classe 19/17/14	
<b>Temperatura dell'olio/Oil temperature</b>	-20°C +80°C	-4°F + 176°F
<b>Temperatura ambiente/Ambient temperature</b>	-20°C +50°C	-4°F + 122°F
<b>È indispensabile l'utilizzo di un filtro per proteggere la valvola (filtrazione consigliata 15 µm)</b> It is necessary a filter use to protect the valve (advised filtration 15 µm)		
<b>Trafilamento massimo</b> Max leakage	0,25 cm <sup>3</sup> /min - 5 gocce/min	0,015 in <sup>3</sup> /min - 5 drops/min

01	02	03
<b>VRSD</b>		

<b>01</b>	Valvole di blocco a semplice effetto DIN2353 (DIN2353 single acting pilot check valves)	<b>VRSD</b>
<b>02</b>	Dimensione (Size)	BSPP 1/4
		BSPP 3/8
<b>03</b>	Dimensione tubo (Size pipe)	Per tubo Ø 8 - For Ø 8 pipe
		Per tubo Ø 12 - For Ø 12 pipe standard

### Performances



### Caratteristiche tecniche - Technical characteristics

Tipo Type	A	Portata max (l/min) Max flow (USgpm)	Pressione max (bar) Max pressure (PSI)	B	C	D	E	F	G	H	I	L	M	Peso approssimativo (kg) Approx weight (lb)	Rapporto di pilotaggio Pilot ratio
<b>VRSD140T8</b>	BSPP 1/4	10 (2.6)	320 (4640)	30 (1.18)	40 (1.57)	63 (2.48)	12,5 (0.49)	28 (1.10)	30 (1.18)	6,5 (0.26)	33 (1.30)	119 (4.69)	8 (0.31)	0,62 (1.36)	1:9
<b>VRSD140</b>		15 (4)						0,63 (1.37)							
<b>VRSD380</b>	BSPP 3/8	35 (9.2)		0,60 (1.32)	12 (0.47)	1:4									